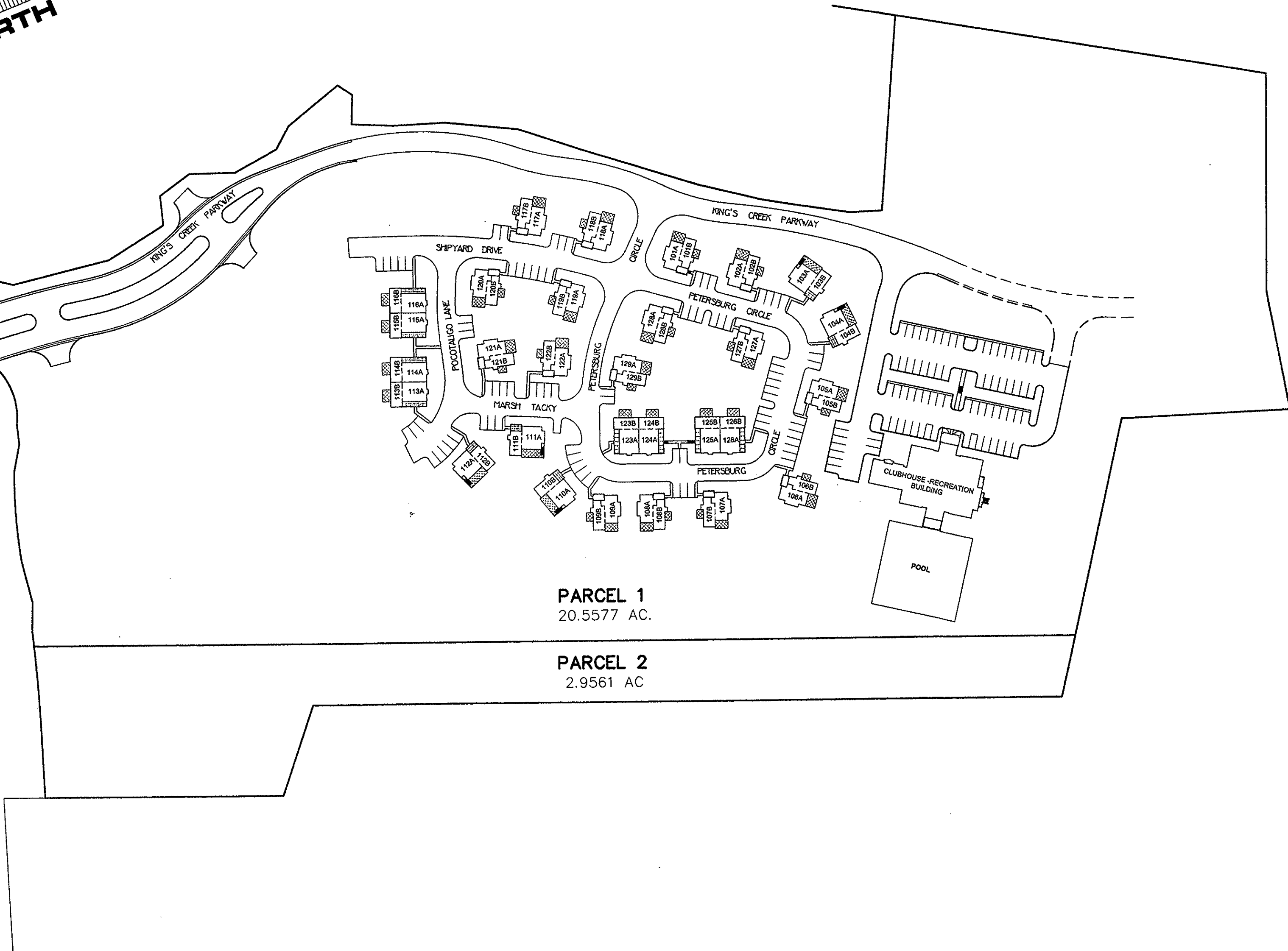




PENNIMAN ROAD
VARIABLE WIDTH R/W

ROUTE 199
VARIABLE WIDTH R/W



PARCEL 1
20.5577 AC.

PARCEL 2
2.9561 AC

KING'S CREEK PLANTATION PHASE I - SPA

DATED: APRIL 8, 1998
(Revised October 30, 1998)

SCALE 1" = 100'

Filed in the Clerk's Office, Circuit Court, York Co., Va.
the 8th day of January 19 99

Teste:
Nancy B. Kane, Clerk
[Signature] D.C.