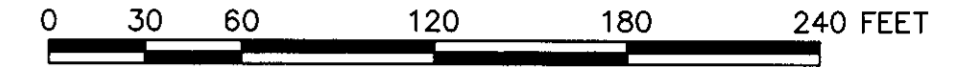


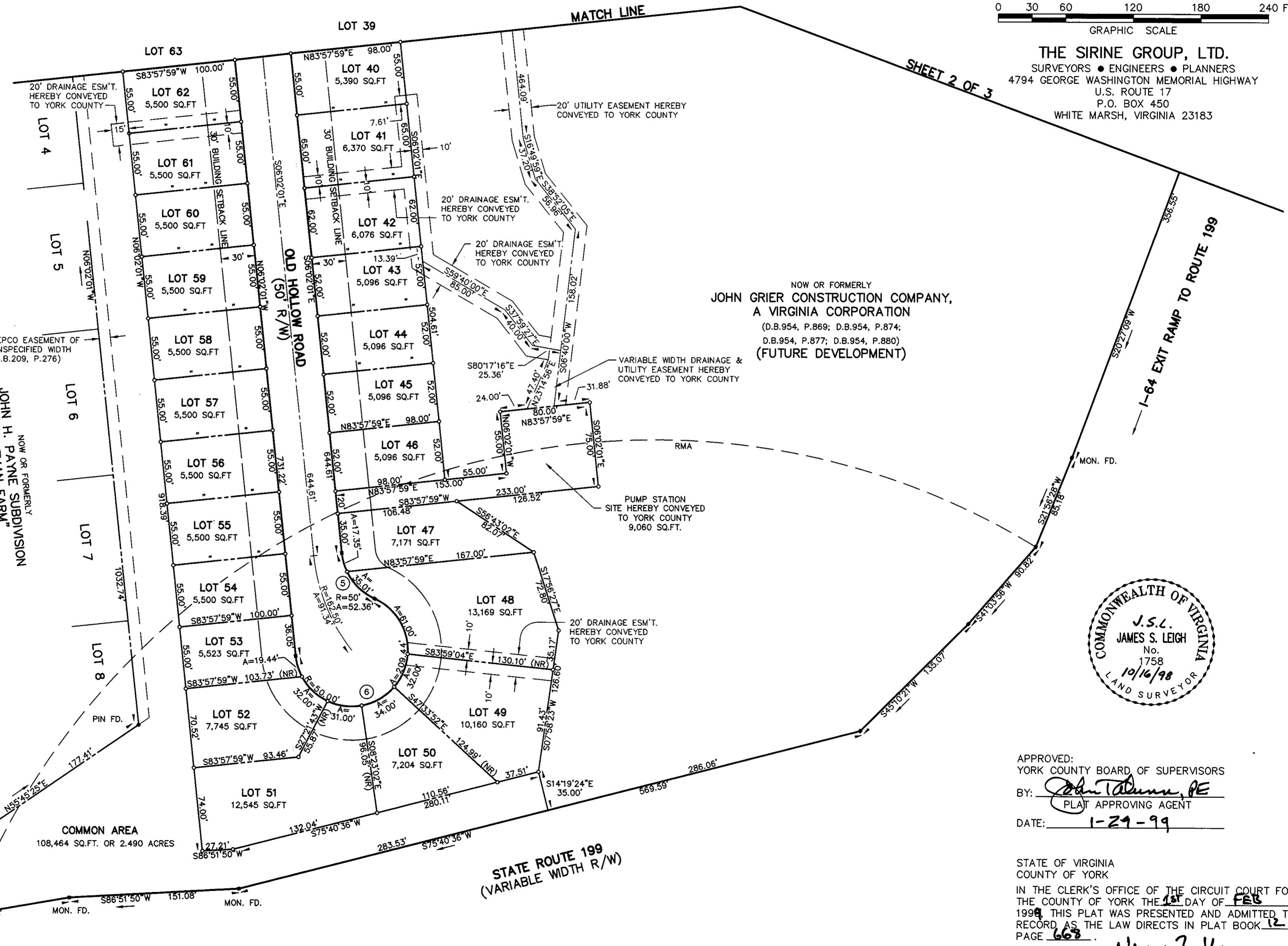
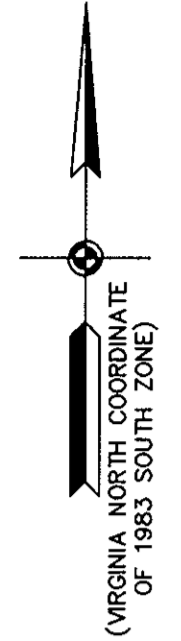
OF PENNIMAN EAST, SECTION ONE (P.B.12, P.545)

BRUTON DISTRICT - COUNTY OF YORK, VIRGINIA SCALE: 1" = 60' SEPTEMBER 10, 1998

SHEET 3 OF 3



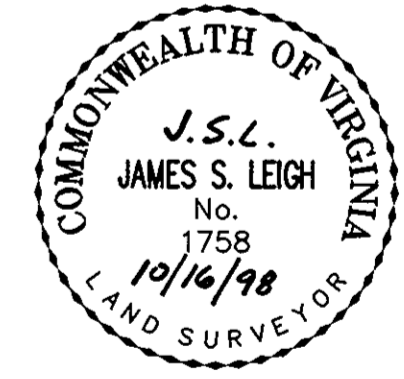
THE SIRINE GROUP, LTD. SURVEYORS • ENGINEERS • PLANNERS 4794 GEORGE WASHINGTON MEMORIAL HIGHWAY U.S. ROUTE 17 P.O. BOX 450 WHITE MARSH, VIRGINIA 23183



NOW OR FORMERLY JOHN GRIER CONSTRUCTION COMPANY, A VIRGINIA CORPORATION (D.B.954, P.869; D.B.954, P.874; D.B.954, P.877; D.B.954, P.880) (FUTURE DEVELOPMENT)

NOW OR FORMERLY JOHN H. PAYNE SUBDIVISION "LUTMAN FARM" (D.B.185, P.253; D.B.185, P.289)

NOW OR FORMERLY W.H. HUNDLEY ESTATE (D.B.196, P.253)



APPROVED: YORK COUNTY BOARD OF SUPERVISORS BY: [Signature] PLAT APPROVING AGENT DATE: 1-29-99

STATE OF VIRGINIA COUNTY OF YORK IN THE CLERK'S OFFICE OF THE CIRCUIT COURT FOR THE COUNTY OF YORK THE 10th DAY OF FEB 1999 THIS PLAT WAS PRESENTED AND ADMITTED TO RECORD AS THE LAW DIRECTS IN PLAT BOOK 12 PAGE 668

TESTE: Nancy B. Kane CLERK BY: [Signature] J. D. C.