

PLAT OF SUBDIVISION **693**
THE GREENLANDS
 PHASE ONE
 BETHEL MAGISTERIAL DISTRICT
 COUNTY OF YORK, VIRGINIA

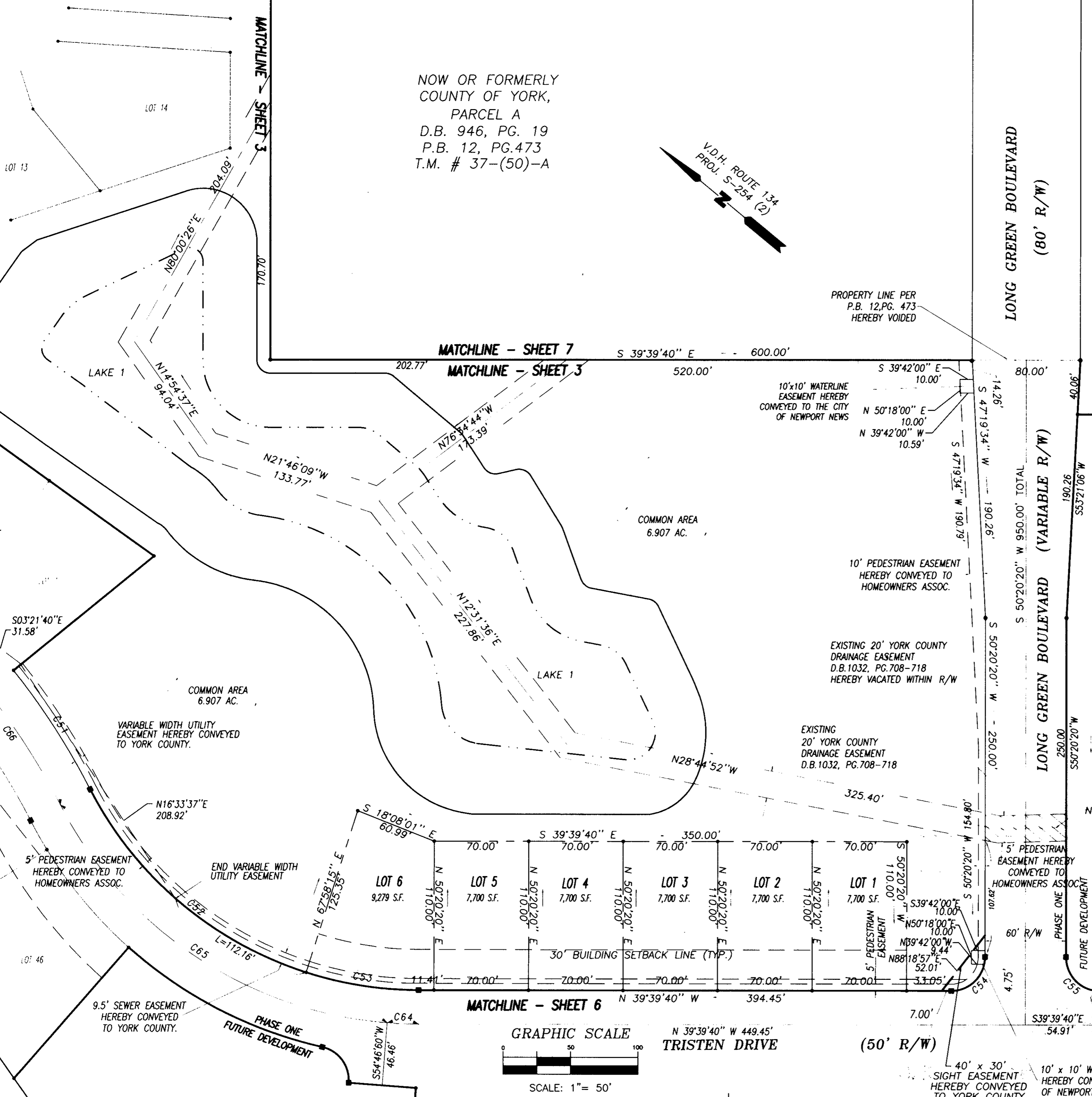
DATE: 4/20/99 SHEET 4 OF 7 SCALE: 1"=50'

PROJECT NO: 96-022 DRAWN BY:

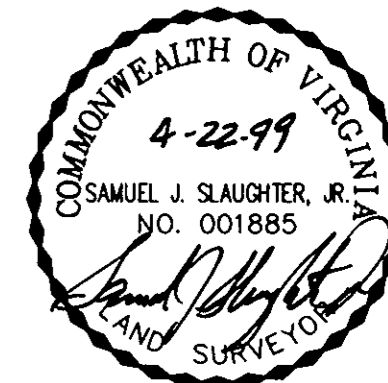


SLEDD & ASSOCIATES, P.C.
 ENGINEERS PLANNERS SURVEYORS
 11832 ROCK LANDING DRIVE, SUITE 203
 NEWPORT NEWS, VIRGINIA 23606
 (757) 873-3386

NOW OR FORMERLY
 COUNTY OF YORK
 PARCEL B
 P.B. 12, PG. 473
 T.M. # 37-(50)-B



MATCHLINE - SHEET 7



NOW OR FORMERLY
 GEORGE L. SMITH, JR.
 D.B. 295, PG. 632
 TAX PARCEL 37-(11)-C

APPROVED:
YORK COUNTY BOARD OF SUPERVISORS

BY: *John T. Quinn PE*
 PLAT APPROVING AGENT

DATE: 5/6/99
 N41°21'06"W 50.02'

STATE OF VIRGINIA
 COUNTY OF YORK

IN THE CLERK'S OFFICE OF THE CIRCUIT COURT FOR THE COUNTY OF YORK, THE 6th DAY OF May, 1999. THIS MAP WAS PRESENTED AND ADMITTED TO RECORD AS THE LAW DIRECTS IN PLAT BOOK 12, PAGE 693.

TESTE: **NANCY B. KANE, CLERK**

BY: *Joan Ann D.C.*
 CLERK