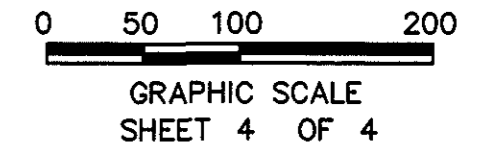
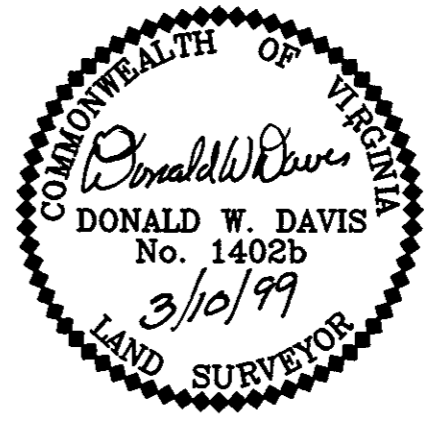


SUBDIVISION PLAT OF

# RUNNING MAN SECTION EIGHT

BETHEL MAGISTERIAL DISTRICT  
 COUNTY OF YORK, VIRGINIA  
 SCALE: 1" = 100' DATE: 10 MARCH 1999

**DAVIS & ASSOCIATES, P.C.**  
 SURVEYORS - PLANNERS  
 3630 GEORGE WASHINGTON  
 MEMORIAL HIGHWAY-SUITE "G"  
 YORKTOWN, VIRGINIA 23693



- SYMBOLS -

- DENOTES MINIMUM BUILDING SETBACK LINE
- DENOTES IRON PIPE FOUND
- DENOTES IRON PIPES TO BE SET AT ALL PROPERTY LINE JUNCTURES
- DENOTES CONCRETE MONUMENT FOUND
- DENOTES CONCRETE MONUMENT TO BE SET

\* NOTE: THE AREA SHOWN HEREON AS "AREA OF FUTURE DEVELOPMENT" IS NOT APPROVED FOR SALE OR DEVELOPMENT AT THIS TIME. IN ORDER TO BE CONSIDERED BUILDABLE, THIS AREA MUST BE DEPICTED ON A PLAT OF SUBDIVISION WHICH MUST BE APPROVED BY THE COUNTY OF YORK AND SUBSEQUENTLY RECORDED IN THE CLERK'S OFFICE OF THE CIRCUIT COURT OF YORK COUNTY.

**APPROVED**

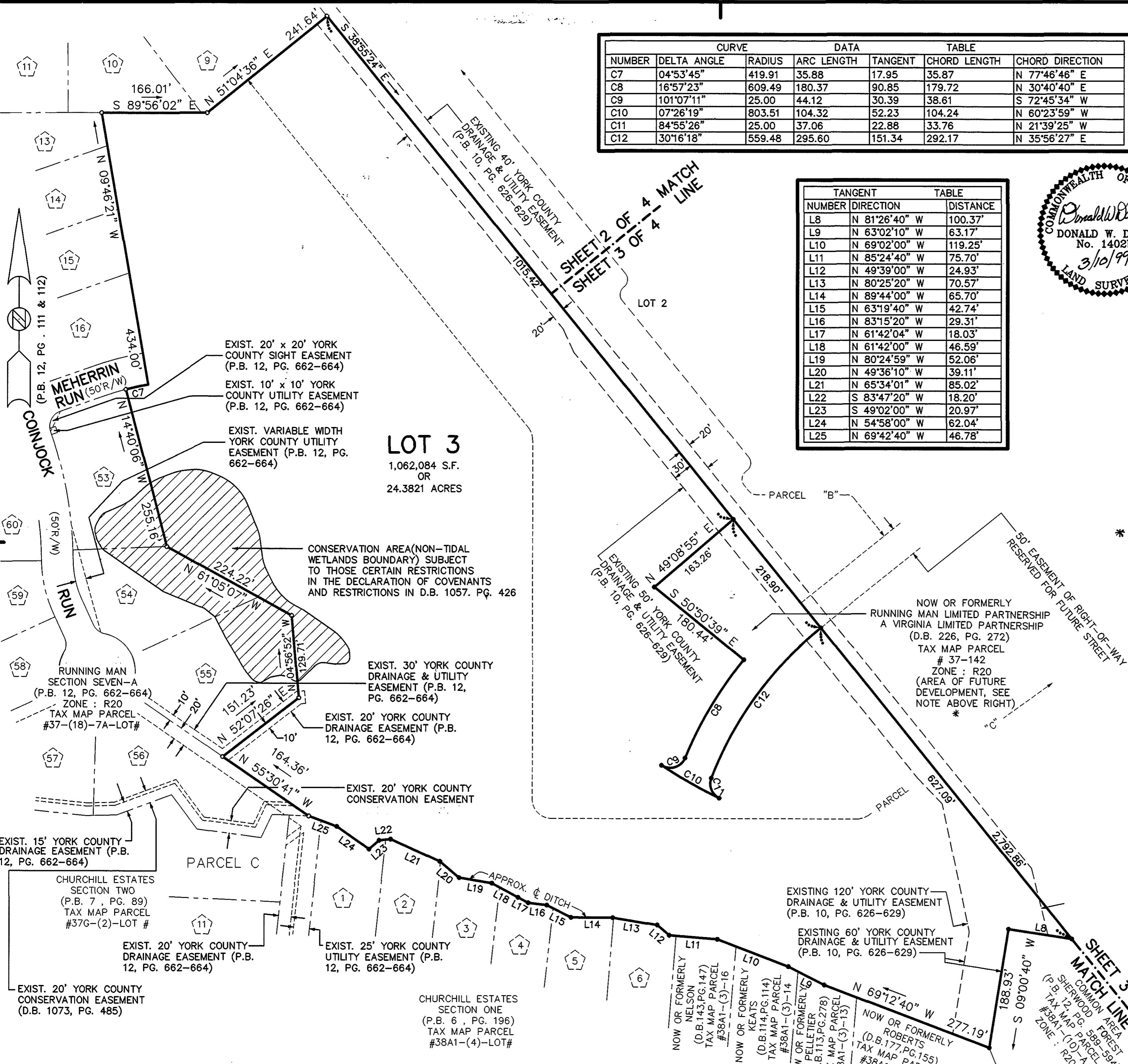
YORK COUNTY BOARD OF SUPERVISORS

BY: John T. Quinn, PE  
 PLAT APPROVING AGENT

DATE: 7/15/99

CURVE DATA TABLE						
NUMBER	DELTA ANGLE	RADIUS	ARC LENGTH	TANGENT	CHORD LENGTH	CHORD DIRECTION
C7	04°53'45"	419.91	35.88	17.95	35.87	N 77°46'46" E
C8	16°57'23"	609.49	180.37	90.85	179.72	N 30°40'40" E
C9	101°07'11"	25.00	44.12	30.39	38.61	S 72°45'34" W
C10	07°26'19"	803.51	104.32	52.23	104.24	N 60°23'59" W
C11	84°55'26"	25.00	37.06	22.88	33.76	N 21°39'25" W
C12	30°16'18"	559.48	295.60	151.34	292.17	N 35°56'27" E

TANGENT TABLE		
NUMBER	DIRECTION	DISTANCE
L8	N 81°26'40" W	100.37'
L9	N 63°02'10" W	63.17'
L10	N 69°02'00" W	119.25'
L11	N 85°24'40" W	75.70'
L12	N 49°39'00" W	24.93'
L13	N 80°25'20" W	70.57'
L14	N 89°44'00" W	65.70'
L15	N 63°19'40" W	42.74'
L16	N 83°15'20" W	29.31'
L17	N 61°42'04" W	18.03'
L18	N 61°42'00" W	46.59'
L19	N 80°24'59" W	52.06'
L20	N 49°36'10" W	39.11'
L21	N 65°34'01" W	85.02'
L22	S 83°47'20" W	18.20'
L23	S 49°02'00" W	20.97'
L24	N 54°58'00" W	62.04'
L25	N 69°42'40" W	46.78'



**LOT 3**  
 1,062,084 S.F.  
 OR  
 24.3821 ACRES

CONSERVATION AREA (NON-TIDAL WETLANDS BOUNDARY) SUBJECT TO THOSE CERTAIN RESTRICTIONS IN THE DECLARATION OF COVENANTS AND RESTRICTIONS IN D.B. 1057. PG. 426

NOW OR FORMERLY  
 RUNNING MAN LIMITED PARTNERSHIP  
 A VIRGINIA LIMITED PARTNERSHIP  
 (D.B. 226, PG. 272)  
 TAX MAP PARCEL # 37-142  
 ZONE: R20  
 (AREA OF FUTURE DEVELOPMENT, SEE NOTE ABOVE RIGHT)

STATE OF VIRGINIA  
 COUNTY OF YORK  
 IN THE CLERK'S OFFICE OF THE CIRCUIT COURT FOR THE COUNTY OF YORK THE 16TH DAY OF July 1999, THIS MAP WAS PRESENTED AND ADMITTED TO RECORD AS THE LAW DIRECTS IN PLAT BOOK 13, PAGE 16.

TESTE: NANCY B. KANE, CLERK

BY: John D.C.