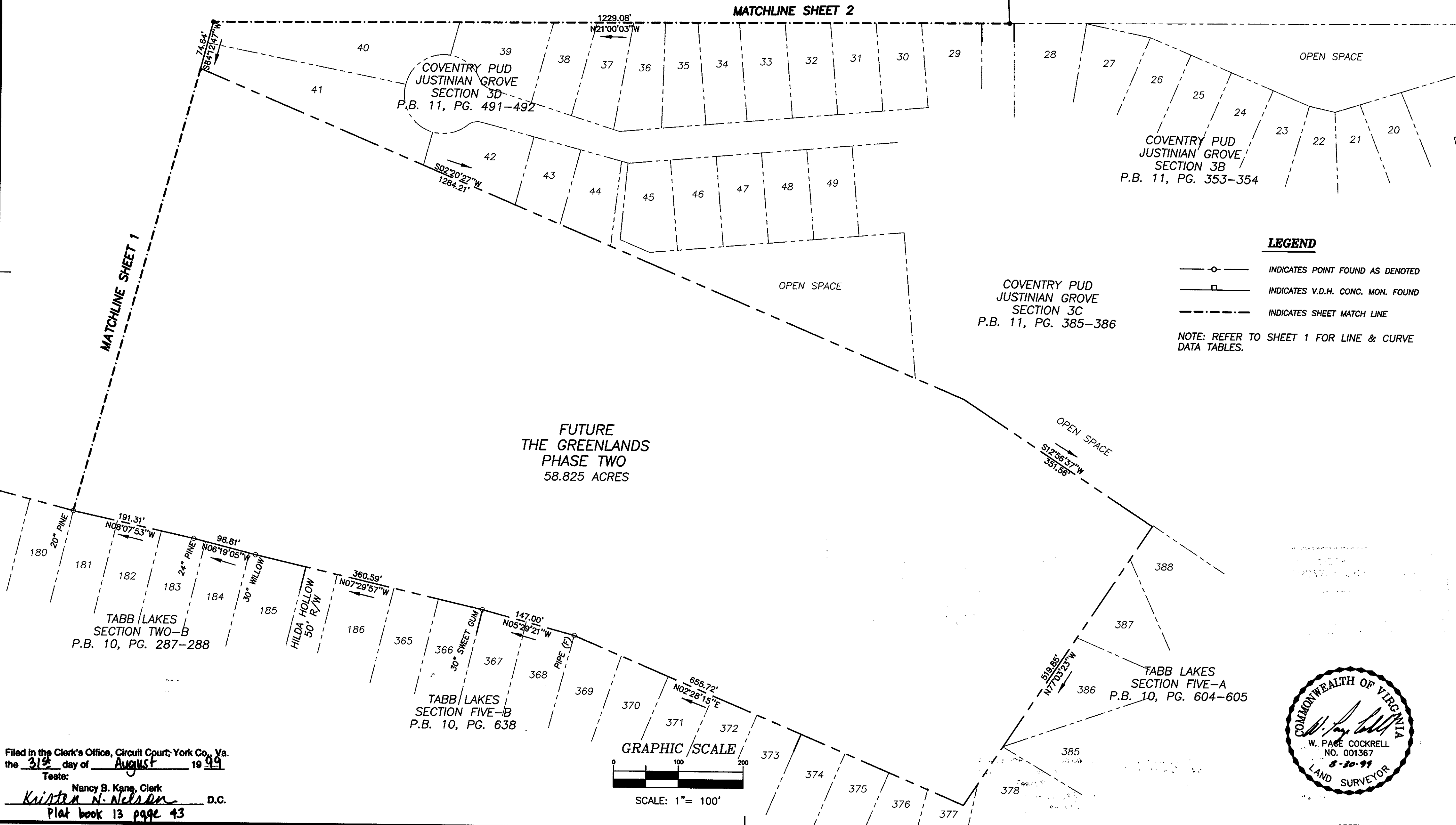


**PARCEL RELEASE EXHIBIT**  
**58.825 ACRES, PROPERTY OF**  
**COMMONWEALTH COMMUNITIES, L.C.**

**BETHEL DISTRICT**  
**COUNTY OF YORK, VIRGINIA**

DATE: 8/29/99	SHEET 3 OF 3	SCALE: 1"=100'
PROJECT NO: 96-022		DRAWN BY: SJB

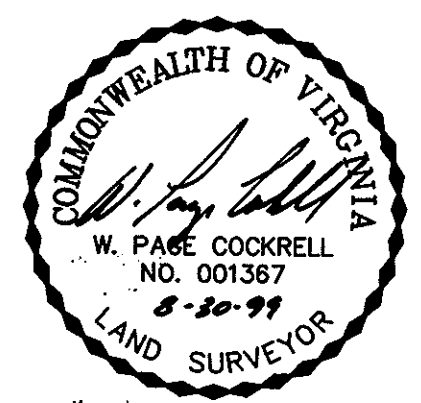
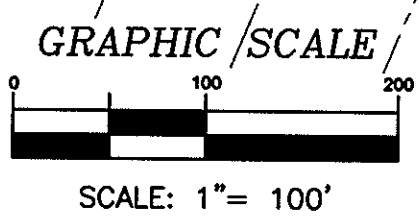
**SLEDD & ASSOCIATES, P.C.**  
 ENGINEERS PLANNERS SURVEYORS  
 11832 ROCK LANDING DRIVE, SUITE 203  
 NEWPORT NEWS, VIRGINIA 23606  
 (757) 873-3386



**LEGEND**

- INDICATES POINT FOUND AS DENOTED
- INDICATES V.D.H. CONC. MON. FOUND
- - - - - INDICATES SHEET MATCH LINE

NOTE: REFER TO SHEET 1 FOR LINE & CURVE DATA TABLES.



Filed in the Clerk's Office, Circuit Court, York Co., Va.  
 the 31<sup>st</sup> day of August 19 99  
 Tests:  
 Nancy B. Kane, Clerk  
*Kristen N. Nelson* D.C.  
 Plat book 13 page 43