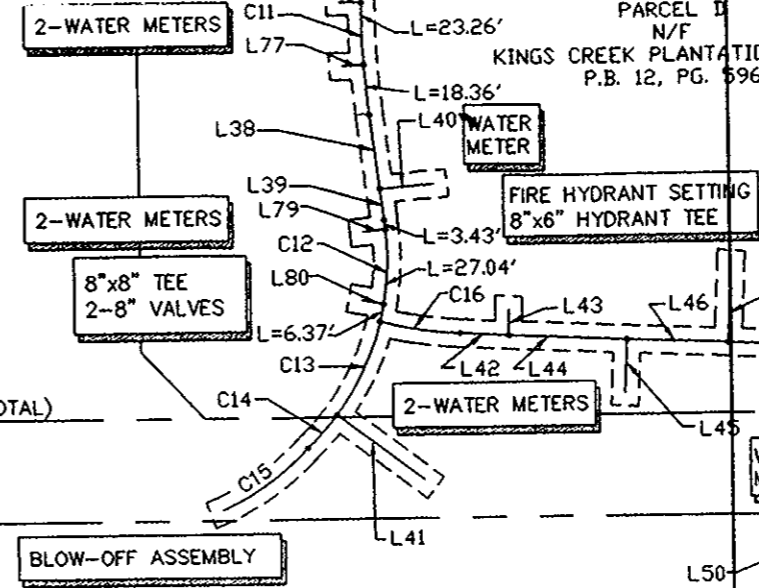
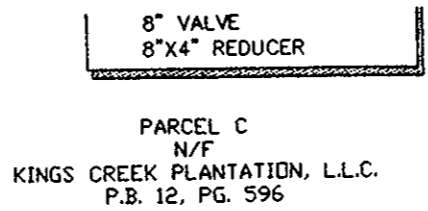
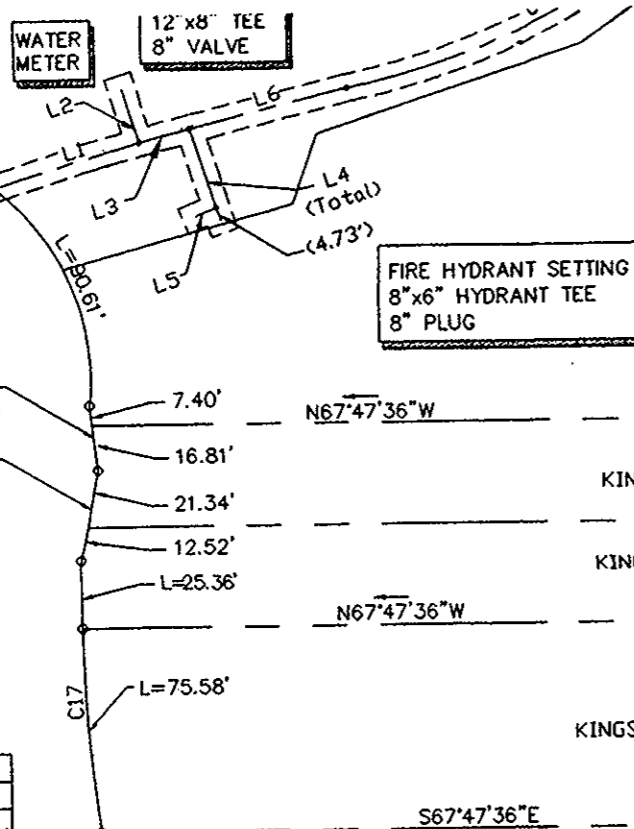
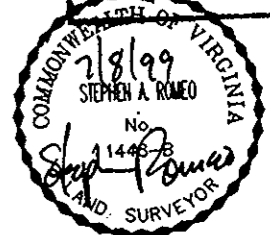


PENNIMAN ROAD
VARIABLE WIDTH R/W
ROUTE 199



PARCEL D
N/F
KINGS CREEK PLANTATION, L.L.C.
P.B. 12, PG. 596

YORK COUNTY
APPROVED FOR RECORDATION
BY: *Al Maddala*
TITLE: *Chief - Development & Compliance*
DATE: *Sept. 1, 1999*



LINE	LENGTH	BEARING
L1	56.67	S84°07'04"E
L2	20.58	N05°00'02"E
L3	19.40	S82°07'34"E
L4	35.08	N03°42'18"E
L5	8.10	S89°54'11"W
L6	59.92	N81°27'46"W
L7	22.60	S76°55'16"W
L8	5.95	S70°45'50"W
L9	5.64	S70°45'50"W
L10	23.27	S24°06'04"E
L11	7.13	N64°48'57"E
L12	95.25	S23°47'58"E
L13	59.25	S59°06'23"W
L14	45.61	S44°42'18"E
L15	4.47	S47°52'40"E
L29	13.64	N46°24'23"E
L30	22.59	N44°09'32"E
L31	25.43	N48°38'01"E
L32	6.54	N40°24'04"W
L33	31.17	S44°02'29"W
L34	21.34	S36°56'50"W
L35	21.42	S28°08'58"W
L36	63.26	N67°52'22"W
L37	44.25	S24°40'05"W
L38	27.49	S14°50'15"W
L39	11.39	S15°00'10"W

L40	20.02	N72°45'40"W
L41	40.33	N30°39'02"W
L42	18.44	S65°15'54"E
L43	9.02	N22°06'32"E
L44	43.92	N65°15'54"W
L45	19.47	N24°44'06"E
L46	37.50	N65°15'54"W
L47	27.97	S24°44'06"W
L48	51.10	S65°15'54"E
L50	42.32	N67°12'24"E
L75	6.35	S37°41'56"W
L76	10.00	S32°28'14"W
L77	8.00	S71°44'07"E
L79	7.98	S74°17'31"E
L80	7.85	S57°37'52"E
L81	8.00	S67°23'37"E
L91	18.33	S24°53'12"E
L92	15.58	S72°11'39"E
L93	11.65	N17°00'07"E
L94	12.26	N22°07'38"E
L95	12.67	N23°07'36"E
L96	12.70	N26°25'50"E
L97	69.06	S84°07'04"E

CURVE	LENGTH	RADIUS	TANGENT	CHORD BEARING	CHORD	DELTA
C1	166.52	279.50	85.81	N84°11'32"E	164.07	34°08'06'
C2	51.20	178.00	25.78	S66°00'43"W	51.03	16°28'54'
C3	274.08	339.00	145.03	N71°08'21"W	266.68	46°19'25'
C4	67.32	311.00	33.79	S54°58'00"E	67.18	12°24'06'
C5	57.76	339.00	28.95	N56°17'12"W	57.69	09°45'41'
C8	219.97	759.00	110.76	N57°26'25"W	219.20	16°36'19'
C9	38.76	759.00	19.39	N67°11'05"W	38.76	02°55'34'
C10	13.28	159.00	6.64	N71°02'25"W	13.28	04°47'07'
C11	53.83	307.00	26.98	S19°51'37"W	53.76	10°02'44'
C12	36.85	93.00	18.67	N24°56'37"E	36.61	22°42'09'
C13	37.74	93.00	19.13	N47°55'14"E	37.48	23°15'06'
C14	16.32	93.00	8.18	N64°33'33"E	16.30	10°03'08'
C15	39.04	91.00	19.83	N76°52'55"E	38.74	24°34'52'
C16	29.75	145.00	14.93	S59°23'15"E	29.70	11°45'17'
C17	100.94	611.62	50.58	S18°36'02"W	100.83	09°27'21'
C18	163.09	85.59	120.38	N25°52'46"W	139.51	109°10'22'
C19	105.91	143.24	55.51	S89°51'46"E	103.52	42°21'50'
C20	33.44	1705.02	16.72	S04°13'13"E	33.44	01°07'25'

PLAT SHOWING WATERLINE EASEMENT
AT
KINGS CREEK PLANTATION,
PHASE I SPA & PHASE I SPB
BRUTON DISTRICT
YORK COUNTY, VIRGINIA
TO BE CONVEYED TO
THE CITY OF NEWPORT NEWS, VIRGINIA
BY
KINGS CREEK PLANTATION, L.L.C.
SCALE: 1"=50' DATE: 07/07/99

Cost Est No: 051 FY 99 SHEET 1 OF 2 Print File No: N-9816
162 FY 99

Langley and McDonald, P.C.
Engineers • Surveyors • Planners
Landscape Architects • Environmental Consultants
VIRGINIA BEACH WILLIAMSBURG

DRAWN BY: LFV / PF PROJ. NO.: 1970093-000.43
CHKD. BY: AJR DWG. NO.: 10461W