

APPROVED: YORK COUNTY BOARD OF SUPERVISORS

BY: [Signature] PLAT APPROVING AGENT

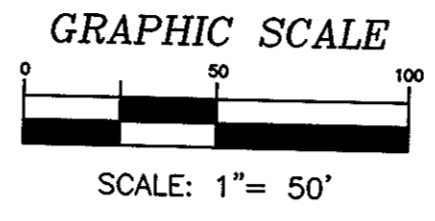
DATE: 1-7-00

STATE OF VIRGINIA COUNTY OF YORK

IN THE CLERK'S OFFICE OF THE CIRCUIT COURT FOR THE COUNTY OF YORK, THE 14th DAY OF January THIS MAP WAS PRESENTED AND ADMITTED TO RECORD AS THE LAW DIRECTS IN PLAT BOOK 13, PAGE 81.

TESTE: [Signature] CLERK

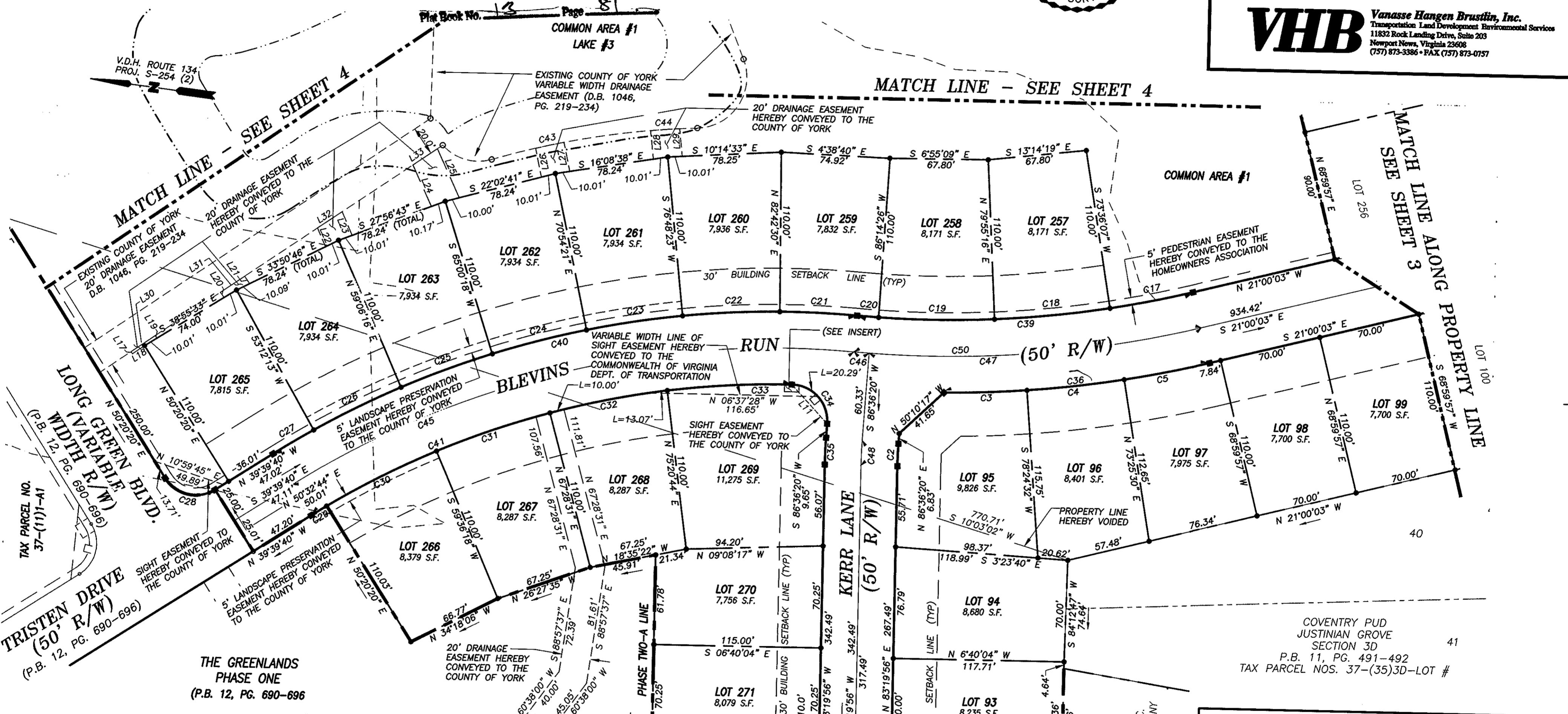
BY: [Signature] Instrument # 00000552



PLAT OF SUBDIVISION THE GREENLANDS PHASE TWO-A BETHEL MAGISTERIAL DISTRICT COUNTY OF YORK, VIRGINIA

DATE: 11/8/99 SHEET 2 OF 4 SCALE: 1"=50' PROJECT NO: 30838.00 DRAWN BY: DWP

VHB Vanasse Hangen Brustlin, Inc. Transportation Land Development Environmental Services 11832 Rock Landing Drive, Suite 203 Newport News, Virginia 23608 (757) 873-3386 FAX (757) 873-0157



LINE DATA CHART

NUMBER	BEARING	DISTANCE	NUMBER	BEARING	DISTANCE
L1	S 68°58'31" W	28.10'	L18	S 41°26'10" E	10.00'
L2	S 68°58'31" W	36.73'	L19	S 48°34'30" W	2.19'
L3	S 08°57'52" W	20.00'	L20	N 48°34'30" E	4.47'
L4	S 21°00'03" E	20.00'	L21	S 48°34'30" W	6.22'
L5	S 21°00'03" E	20.00'	L22	N 59°06'16" E	14.04'
L6	N 40°59'38" E	21.37'	L23	S 59°06'16" W	17.73'
L7	S 46°39'15" E	20.02'	L24	N 58°13'38" E	31.34'
L8	N 40°59'38" E	18.83'	L25	S 58°13'38" W	37.08'
L9	N 66°00'03" W	35.36'	L26	N 70°54'21" E	20.26'
L10	N 29°22'00" E	20.00'	L27	S 70°54'21" W	20.43'
L11	S 40°04'35" W	36.29'	L28	N 76°48'23" E	19.77'
L12	N 83°00'40" E	20.00'	L29	S 76°48'23" W	19.17'
L13	S 83°19'56" W	20.00'	L30	S 41°21'06" E	20.00'
L14	S 68°59'57" W	5.00'	L31	S 41°21'06" E	20.00'
L15	S 21°00'03" E	10.00'	L32	S 41°21'06" E	20.34'
L16	N 68°59'57" E	5.00'	L33	S 41°21'06" E	20.28'
L17	N 48°34'30" E	1.78'			

