

APPROVED:
YORK COUNTY BOARD OF SUPERVISORS

BY: [Signature]
PLAT APPROVING AGENT

DATE: 1-7-00

FUTURE DEVELOPMENT
TAX PARCEL NO. 37-(11)-C
N/F
COMMONWEALTH COMMUNITIES, L.C.
A VIRGINIA LIMITED LIABILITY COMPANY
D.B. 1113, PG. 467

PLAT OF SUBDIVISION
THE GREENLANDS
PHASE TWO-A
BETHEL MAGISTERIAL DISTRICT
COUNTY OF YORK, VIRGINIA

DATE: 11/8/99 SHEET 4 OF 4 SCALE: 1"=50'
PROJECT NO: 30838.00 DRAWN BY: DWP

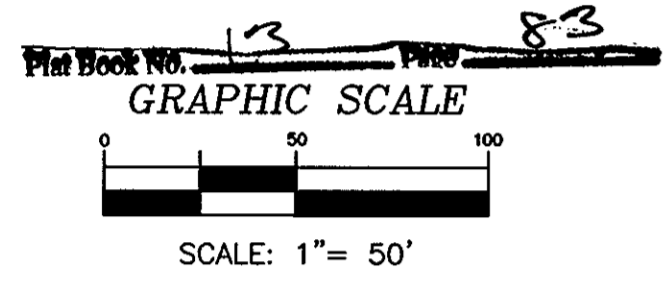
VHB Vanasse Hangen Brustlin, Inc.
Transportation, Land Development, Environmental Services
11832 Rock Landing Drive, Suite 203
Newport News, Virginia 23608
(757) 873-3386 • FAX (757) 873-0757

STATE OF VIRGINIA
COUNTY OF YORK

IN THE CLERK'S OFFICE OF THE CIRCUIT COURT FOR
THE COUNTY OF YORK, THE 14th DAY OF January 2000
THIS MAP WAS PRESENTED AND ADMITTED TO RECORD AS
THE LAW DIRECTS IN PLAT BOOK 13, PAGE 83.

TESTE: [Signature]
CLERK

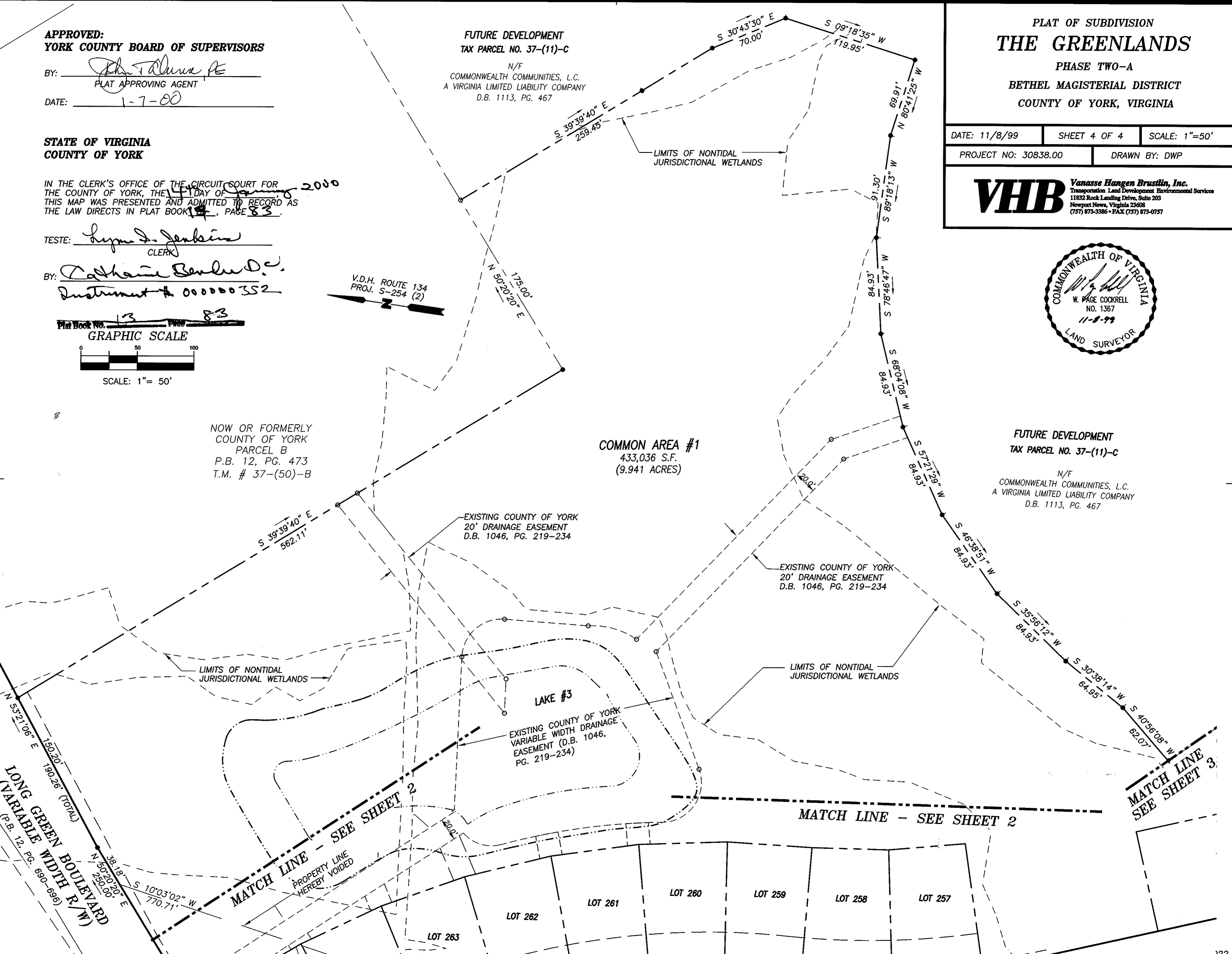
BY: [Signature]
Instrument # 000000352



NOW OR FORMERLY
COUNTY OF YORK
PARCEL B
P.B. 12, PG. 473
T.M. # 37-(50)-B

COMMON AREA #1
433,036 S.F.
(9.941 ACRES)

FUTURE DEVELOPMENT
TAX PARCEL NO. 37-(11)-C
N/F
COMMONWEALTH COMMUNITIES, L.C.
A VIRGINIA LIMITED LIABILITY COMPANY
D.B. 1113, PG. 467



LONG GREEN BOULEVARD
(VARIABLE WIDTH R/W)
(P.B. 12, PG. 690-696)

LIMITS OF NONTIDAL
JURISDICTIONAL WETLANDS

EXISTING COUNTY OF YORK
20' DRAINAGE EASEMENT
D.B. 1046, PG. 219-234

EXISTING COUNTY OF YORK
20' DRAINAGE EASEMENT
D.B. 1046, PG. 219-234

LIMITS OF NONTIDAL
JURISDICTIONAL WETLANDS

EXISTING COUNTY OF YORK
VARIABLE WIDTH DRAINAGE
EASEMENT (D.B. 1046,
PG. 219-234)

MATCH LINE - SEE SHEET 2

MATCH LINE - SEE SHEET 2

MATCH LINE 3
SEE SHEET 3

