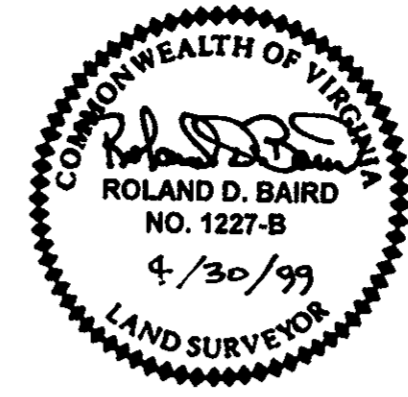
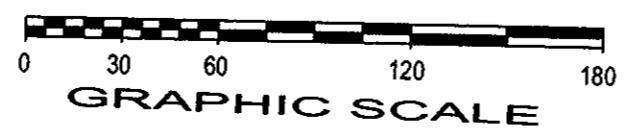
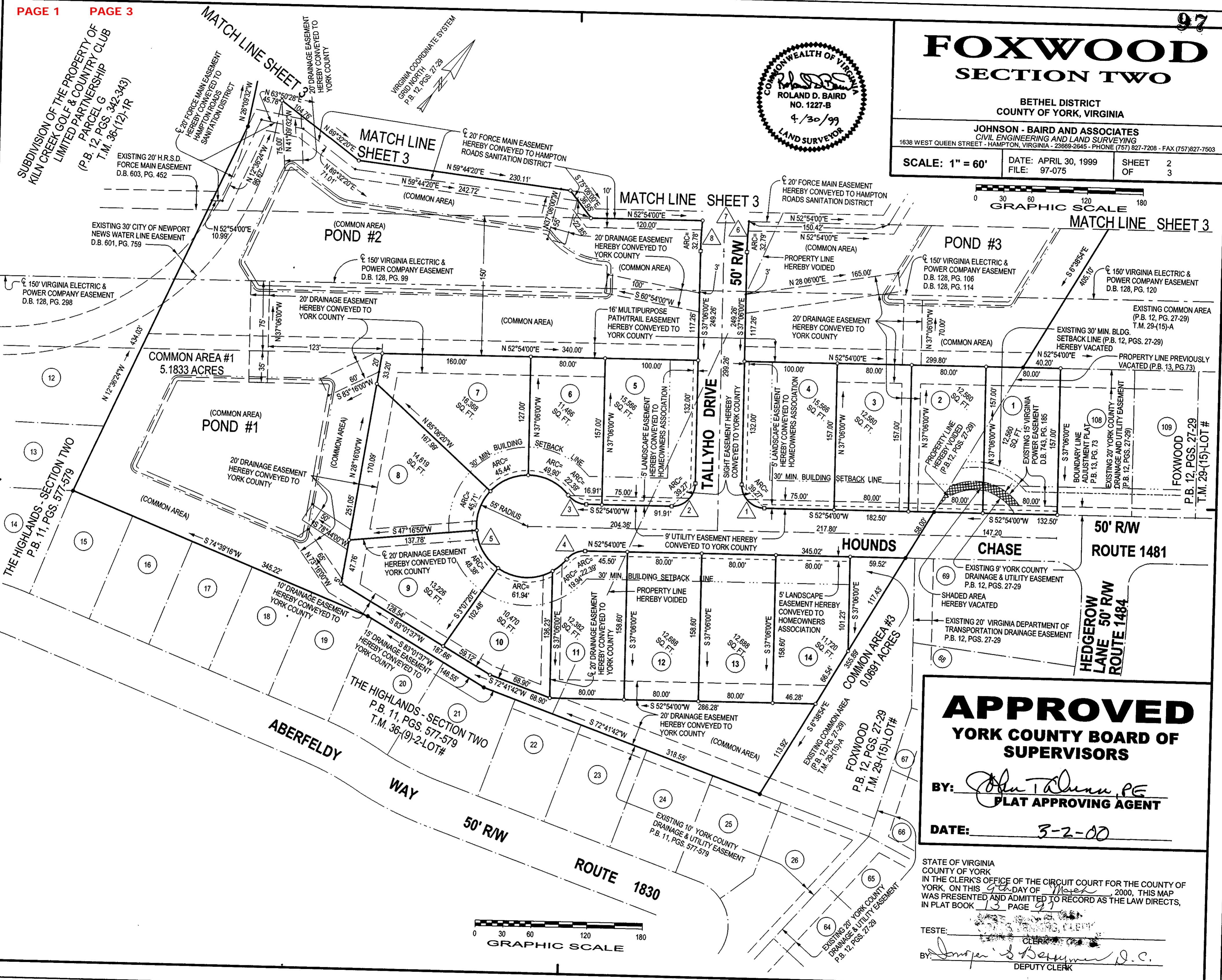


SUBDIVISION OF THE PROPERTY OF
KILN CREEK GOLF & COUNTRY CLUB
LIMITED PARTNERSHIP
PARCEL G
T.M. 36-(12)-1R
(P.B. 12, PGS. 342-343)



FOXWOOD SECTION TWO

BETHEL DISTRICT
COUNTY OF YORK, VIRGINIA
JOHNSON - BAIRD AND ASSOCIATES
CIVIL ENGINEERING AND LAND SURVEYING
1638 WEST QUEEN STREET - HAMPTON, VIRGINIA - 23669-2645 - PHONE (757) 827-7208 - FAX (757) 827-7503
SCALE: 1" = 60' DATE: APRIL 30, 1999 SHEET 2
FILE: 97-075 OF 3



APPROVED
YORK COUNTY BOARD OF SUPERVISORS
BY: *[Signature]* PE
PLAT APPROVING AGENT
DATE: 3-2-00

STATE OF VIRGINIA
COUNTY OF YORK
IN THE CLERK'S OFFICE OF THE CIRCUIT COURT FOR THE COUNTY OF YORK, ON THIS 9th DAY OF March, 2000, THIS MAP WAS PRESENTED AND ADMITTED TO RECORD AS THE LAW DIRECTS, IN PLAT BOOK 13 PAGE 97
TESTE: *[Signature]* CLERK
BY: *[Signature]* DEPUTY CLERK