

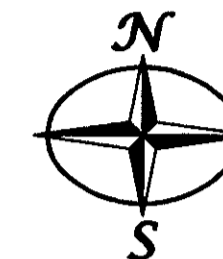
TIDEMILL ESTATES SECTION THREE

BETHEL DISTRICT - YORK COUNTY, VIRGINIA

FEBRUARY 24, 2000

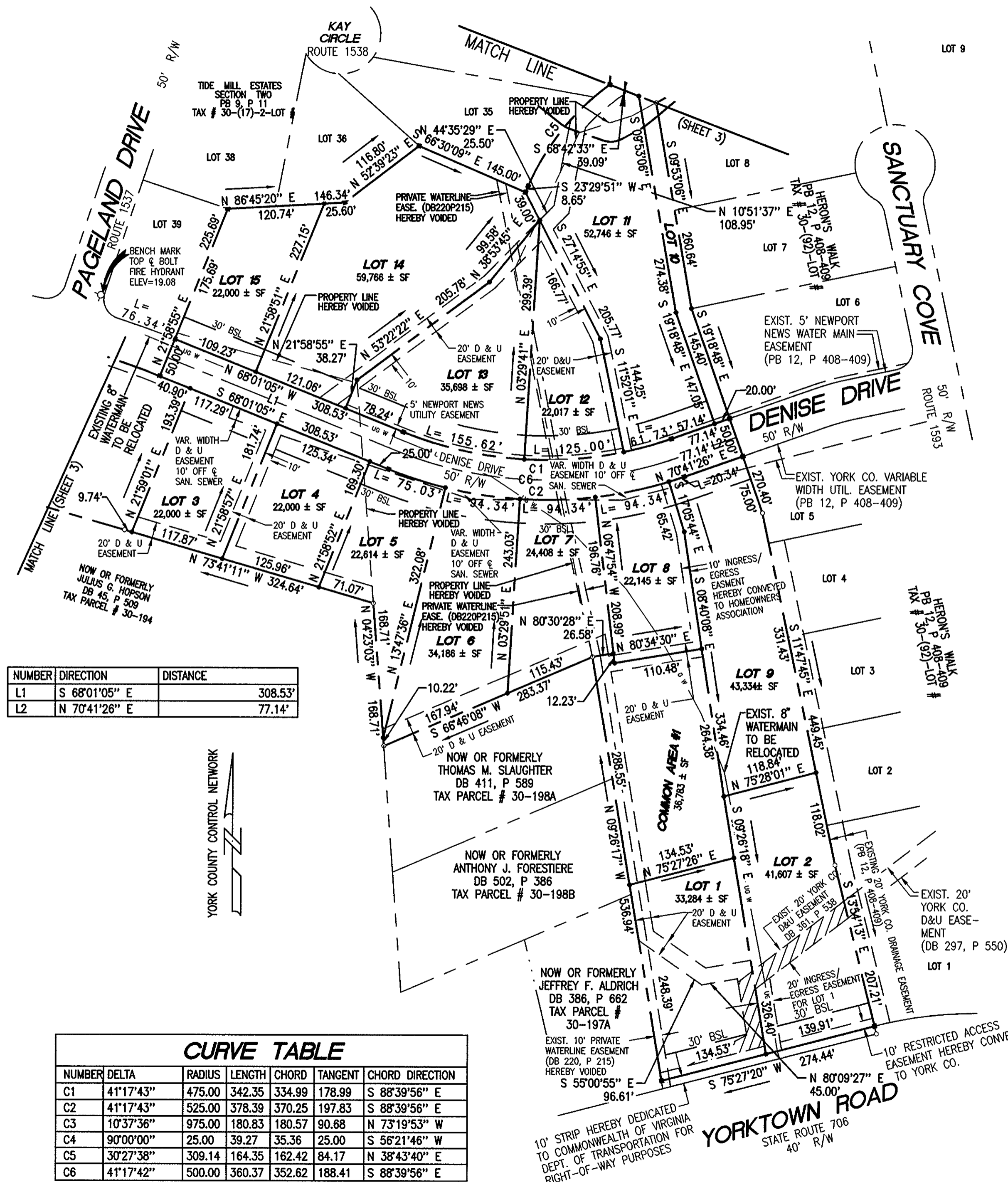
Simmons Newsome, P.C.

Engineers Surveyors Planners
110A Dare Road
Yorktown, Virginia 23692
Phone (757) 898-4914 Fax (757) 898-4914



1" = 100'
SHEET 2 OF 3

NOTE: ALL DRAINAGE AND/OR UTILITY EASEMENTS HEREBY CONVEYED TO YORK COUNTY.

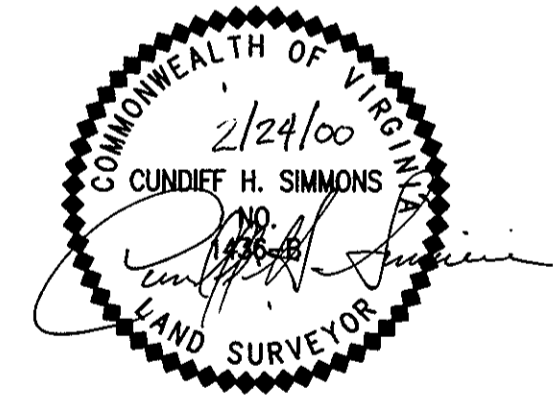


NUMBER	DIRECTION	DISTANCE
L1	S 68°01'05" E	308.53'
L2	N 70°41'26" E	77.14'



CURVE TABLE

NUMBER	DELTA	RADIUS	LENGTH	CHORD	TANGENT	CHORD DIRECTION
C1	41°17'43"	475.00	342.35	334.99	178.99	S 88°39'56" E
C2	41°17'43"	525.00	378.39	370.25	197.83	S 88°39'56" E
C3	10°37'36"	975.00	180.83	180.57	90.68	N 73°19'53" W
C4	90°00'00"	25.00	39.27	35.36	25.00	S 56°21'46" W
C5	30°27'38"	309.14	164.35	162.42	84.17	N 38°43'40" E
C6	41°17'42"	500.00	360.37	352.62	188.41	S 88°39'56" E



APPROVED:
YORK COUNTY BOARD OF SUPERVISORS
BY: Al Maddalena
Plat Approving Agent
DATE: 3/28/00

STATE OF VIRGINIA
COUNTY OF YORK
In the Clerk's Office of the Circuit Court for the
County of York the 28th day of March, 2000 this
map was presented and admitted to record as
the law directs in PLAT BOOK 13 at PAGE 109.
TESTE: LYNN S. JENKINS, CLERK
Clerk
BY: Kristen N. Nelson, DC