

VDDOT BIG BETHEL ROAD  
PROJ. #0600-099-116,C-501

BIG BETHEL ROAD  
STATE ROUTE 600  
50'R/W

HAMPTON HIGHWAY STATE ROUTE 134  
160' MINIMUM & VARIABLE R/W  
105'± FROM 45° BEND TO VALVE  
37' BETWEEN 2-45° BENDS  
160' VALVE

**PARCEL 'A'**  
PROPERTY OF  
A.B. SOUTHALL, JR.  
D.B. 408, PG. 30  
D.B. 408, PG. 32  
D.B. 408, PG. 417  
D.B. 410, PG. 428  
D.B. 414, PG. 72  
D.B. 432, PG. 682  
D.B. 493, PG. 6  
TAX MAP #37-158  
**8.624 ACRES**  
FORMERLY  
9.977 ACRES  
ZONED GB

**PARCEL 'B'**  
PROPERTY OF  
852 L.L.C.  
D.B.930, PG. 853  
TAX MAP #37-159  
**24.352 ACRES**

**PARCEL 'B'**  
PROPERTY OF  
852 L.L.C.  
D.B.930, PG. 853  
TAX MAP #37-159  
**24.352 ACRES**

PROPERTY OF  
852 L.L.C.  
D.B.930, PG. 853  
TAX MAP #37-159A  
**7.937 AC.**

COUNTY OF YORK, VIRGINIA  
PUMP STATION LOT  
(SEE PLAT BY VHB, INC.  
FOR EXACT LOT  
DIMENSIONS)

PROPERTY OF THE  
UNITED STATES OF  
AMERICA  
P.B. 8, PG. 407  
TAX MAP #38A1-(7)-A

PROPERTY OF THE  
UNITED STATES OF  
AMERICA  
P.B. 8, PG. 407  
TAX MAP #37-158A

Filed in the Clerk's Office, Circuit Court, York Co., VA  
the 25<sup>th</sup> day of April, 2000  
Teste: Lynn S. Jenkins, Clerk  
by *Runde Hughes* D.C.



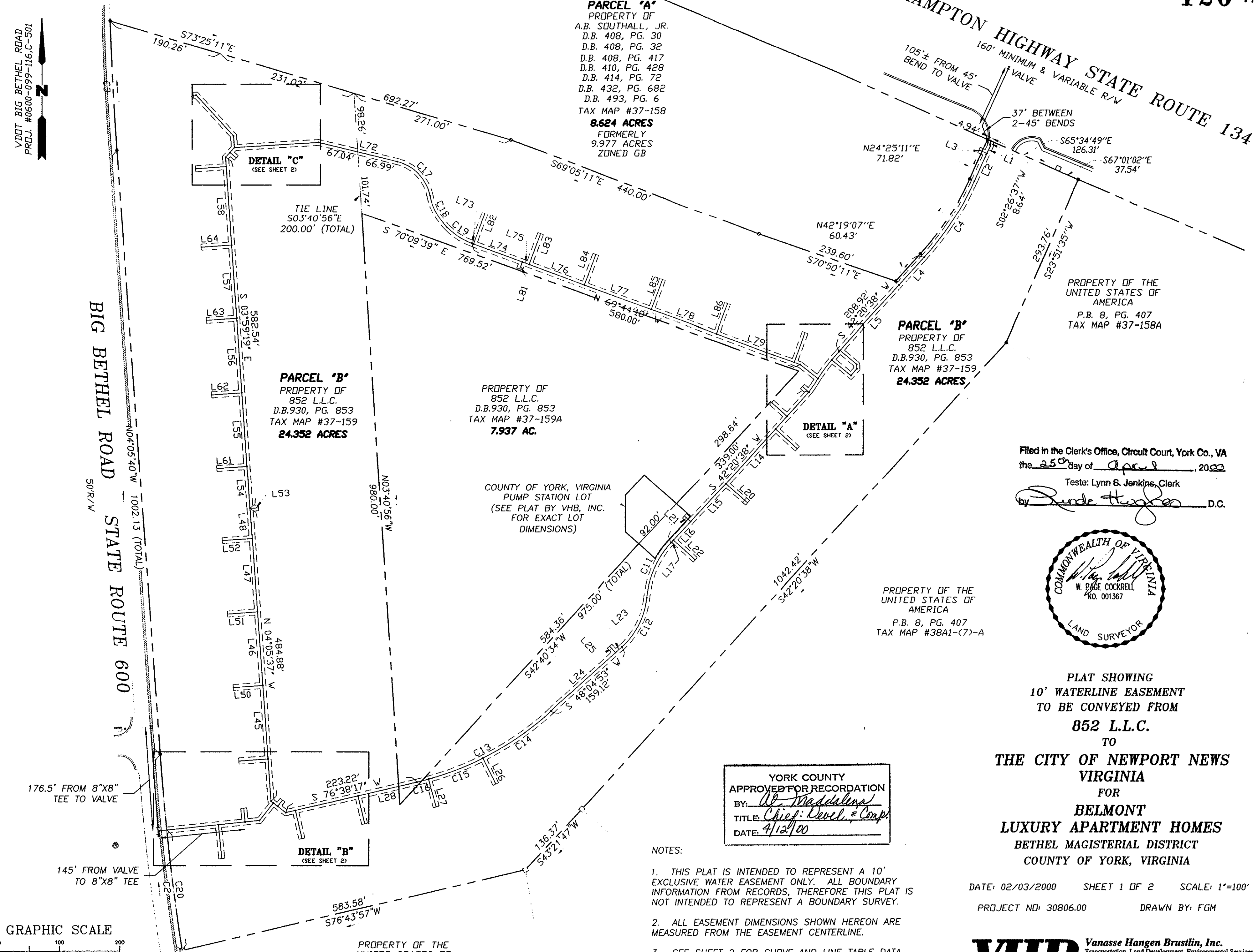
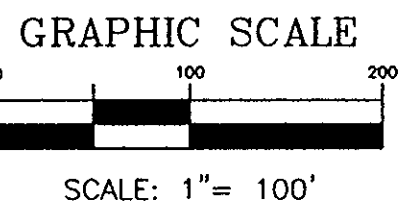
PLAT SHOWING  
10' WATERLINE EASEMENT  
TO BE CONVEYED FROM  
**852 L.L.C.**  
TO  
**THE CITY OF NEWPORT NEWS  
VIRGINIA**  
FOR  
**BELMONT  
LUXURY APARTMENT HOMES**  
BETHEL MAGISTERIAL DISTRICT  
COUNTY OF YORK, VIRGINIA

YORK COUNTY  
APPROVED FOR RECORDATION  
BY: *W. Magdalena*  
TITLE: *Chief Devel. & Comp.*  
DATE: *4/12/00*

- NOTES:
1. THIS PLAT IS INTENDED TO REPRESENT A 10' EXCLUSIVE WATER EASEMENT ONLY. ALL BOUNDARY INFORMATION FROM RECORDS, THEREFORE THIS PLAT IS NOT INTENDED TO REPRESENT A BOUNDARY SURVEY.
  2. ALL EASEMENT DIMENSIONS SHOWN HEREON ARE MEASURED FROM THE EASEMENT CENTERLINE.
  3. SEE SHEET 2 FOR CURVE AND LINE TABLE DATA.

DATE: 02/03/2000 SHEET 1 OF 2 SCALE: 1"=100'  
PROJECT NO: 30806.00 DRAWN BY: FGM

**VHB** Vanasse Hangen Brustlin, Inc.  
Transportation Land Development Environmental Services  
11832 Rock Landing Drive, Suite 203  
Newport News, Virginia 23606  
(757) 873-3386 • FAX (757) 873-0757



PROPERTY OF THE  
UNITED STATES OF  
AMERICA  
D.B.264, PG.210  
TAX MAP #37-159B