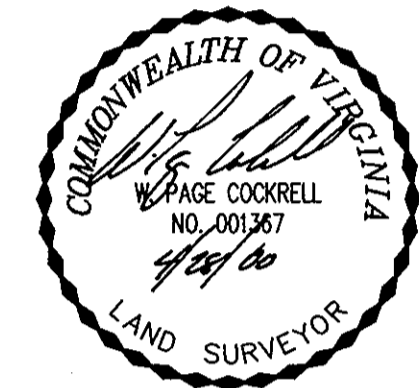


SUBDIVISION OF THE PROPERTY OF
852 L.L.C.
 SHOWING PUMP STATION LOT
 FOR
BELMONT LUXURY APARTMENT HOMES
 BETHEL MAGISTERIAL DISTRICT
 COUNTY OF YORK, VIRGINIA

DATE: 2/8/00 SHEET 2 OF 3 SCALE: 1"=100'
 PROJECT NO: 30806.00 DRAWN BY: CADD

VHB *Vanasse Hangen Brustlin, Inc.*
 Transportation Land Development Environmental Services
 11832 Rock Landing Drive, Suite 203
 Newport News, Virginia 23606
 (757) 873-3386 • FAX (757) 873-0757

FILE # 96026



GRAPHIC SCALE



SCALE: 1" = 100'

LEGEND

- INDICATES IRON PIN TO BE SET
- INDICATES IRON PIPE FOUND
- INDICATES CONC. MON. FOUND

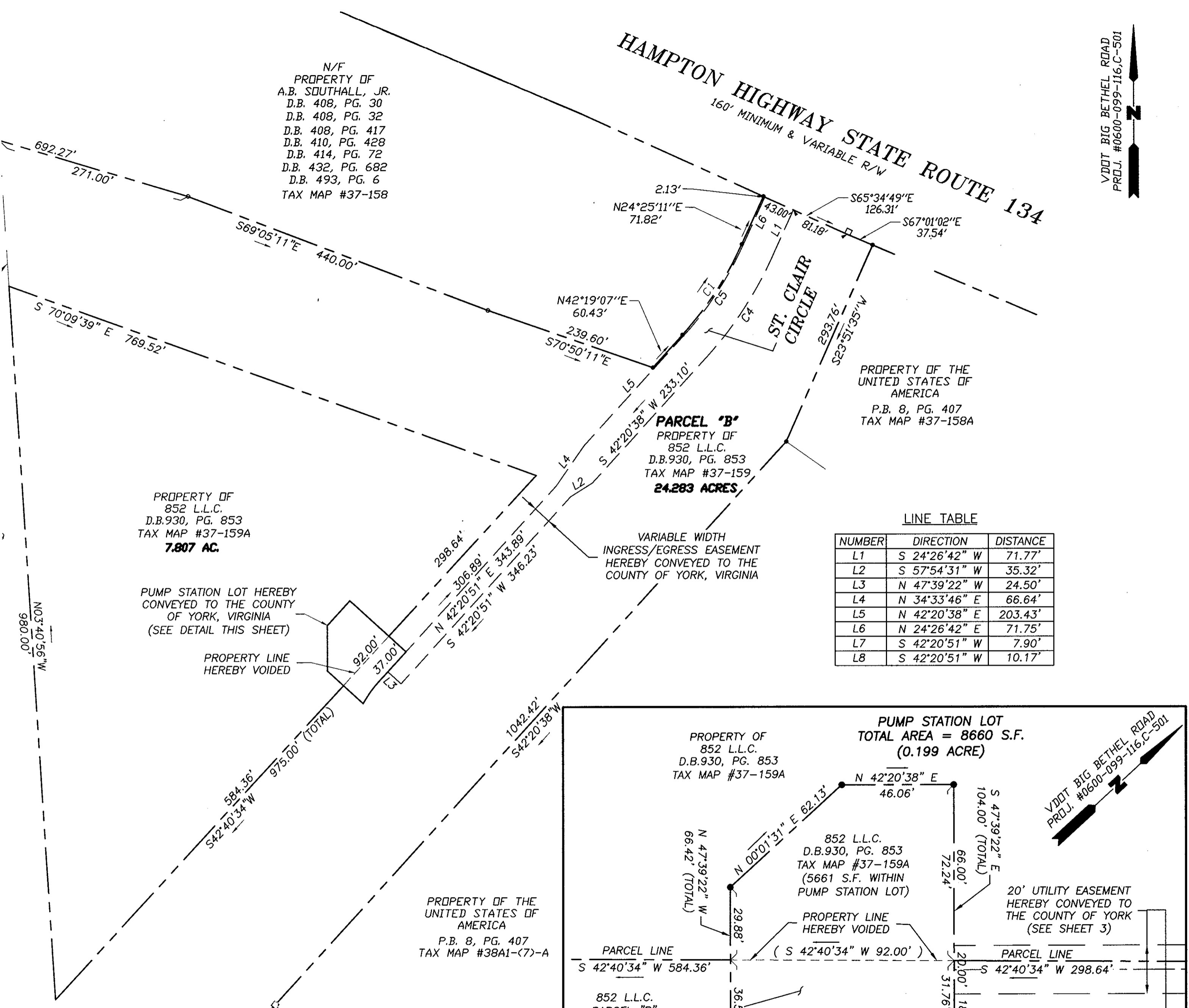
APPROVED:
YORK COUNTY BOARD OF SUPERVISORS

BY: *Al. Massaron*
 PLAT APPROVING AGENT
 DATE: 6/16/00

STATE OF VIRGINIA
 COUNTY OF YORK

IN THE CLERK'S OFFICE OF THE CIRCUIT COURT FOR
 THE COUNTY OF YORK, THE 23 DAY OF June, 2000.
 THIS MAP WAS PRESENTED AND ADMITTED TO RECORD AS
 THE LAW DIRECTS IN PLAT BOOK 13, PAGE 148.

TESTE: *[Signature]*
 CLERK
 BY: *Stacy White D.C.*



N/F
 PROPERTY OF
 A.B. SOUTHALL, JR.
 D.B. 408, PG. 30
 D.B. 408, PG. 32
 D.B. 408, PG. 417
 D.B. 410, PG. 428
 D.B. 414, PG. 72
 D.B. 432, PG. 682
 D.B. 493, PG. 6
 TAX MAP #37-158

PROPERTY OF
 852 L.L.C.
 D.B.930, PG. 853
 TAX MAP #37-159A
7.807 AC.

PUMP STATION LOT HEREBY
 CONVEYED TO THE COUNTY
 OF YORK, VIRGINIA
 (SEE DETAIL THIS SHEET)

PROPERTY LINE
 HEREBY VOIDED

HAMPTON HIGHWAY STATE ROUTE 134
 150' MINIMUM & VARIABLE R/W

VDDOT BIG BETHEL ROAD
 PROJ. #0600-099-116.C-501

PROPERTY OF THE
 UNITED STATES OF
 AMERICA
 P.B. 8, PG. 407
 TAX MAP #37-158A

PARCEL "B"
 PROPERTY OF
 852 L.L.C.
 D.B.930, PG. 853
 TAX MAP #37-159
24.283 ACRES,

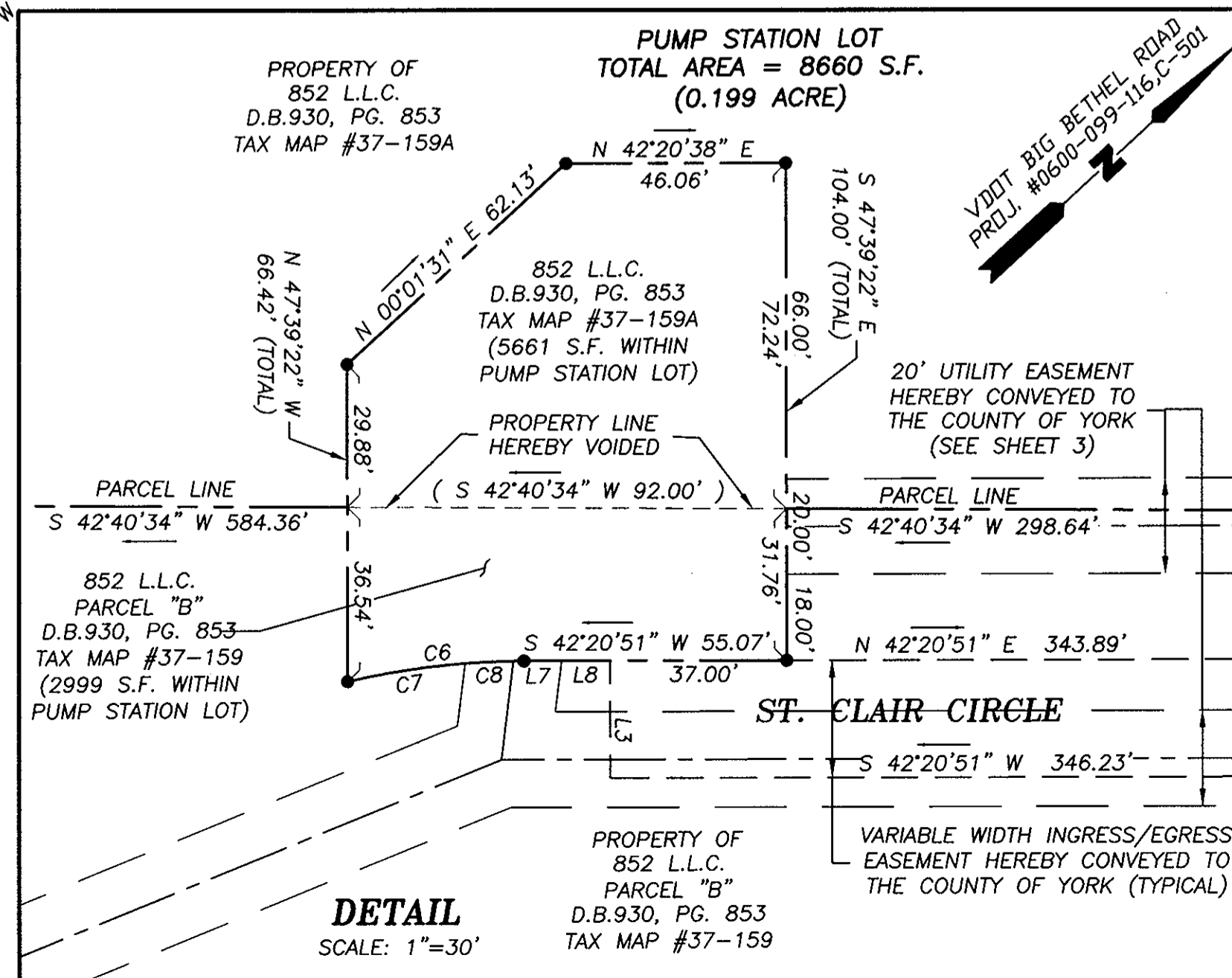
VARIABLE WIDTH
 INGRESS/EGRESS EASEMENT
 HEREBY CONVEYED TO THE
 COUNTY OF YORK, VIRGINIA

LINE TABLE

NUMBER	DIRECTION	DISTANCE
L1	S 24°26'42" W	71.77'
L2	S 57°54'31" W	35.32'
L3	N 47°39'22" W	24.50'
L4	N 34°33'46" E	66.64'
L5	N 42°20'38" E	203.43'
L6	N 24°26'42" E	71.75'
L7	S 42°20'51" W	7.90'
L8	S 42°20'51" W	10.17'

CURVE TABLE

NUMBER	DELTA	RADIUS	LENGTH	TANGENT	CHORD	CH. BEARING
C1	17°53'56"	476.50'	148.86'	75.04'	148.25'	N33°22'09"E
C2	04°53'26"	3809.44'	325.16'	162.68'	325.06'	N06°30'03"W
C3	02°10'18"	5704.58'	216.22'	108.12'	216.21'	N03°00'31"W
C4	17°53'56"	521.50'	162.91'	82.13'	162.25'	S33°23'40"W
C5	17°53'56"	478.50'	149.48'	75.35'	148.87'	N33°23'40"E
C6	13°00'32"	164.06'	37.25'	18.71'	37.17'	S35°46'36"W
C7	08°42'20"	164.06'	24.93'	12.49'	24.90'	S33°37'30"W
C8	04°18'12"	164.06'	12.32'	6.16'	12.32'	S40°07'46"W



DETAIL
 SCALE: 1"=30'

PROPERTY OF
 852 L.L.C.
 D.B.930, PG. 853
 TAX MAP #37-159

VARIABLE WIDTH INGRESS/EGRESS
 EASEMENT HEREBY CONVEYED TO
 THE COUNTY OF YORK (TYPICAL)