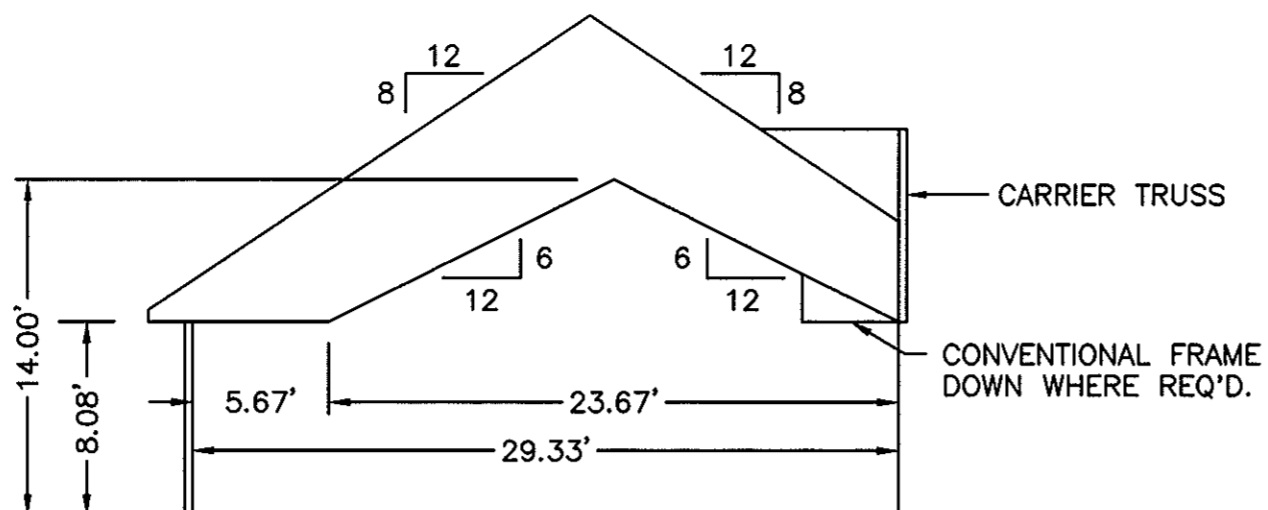
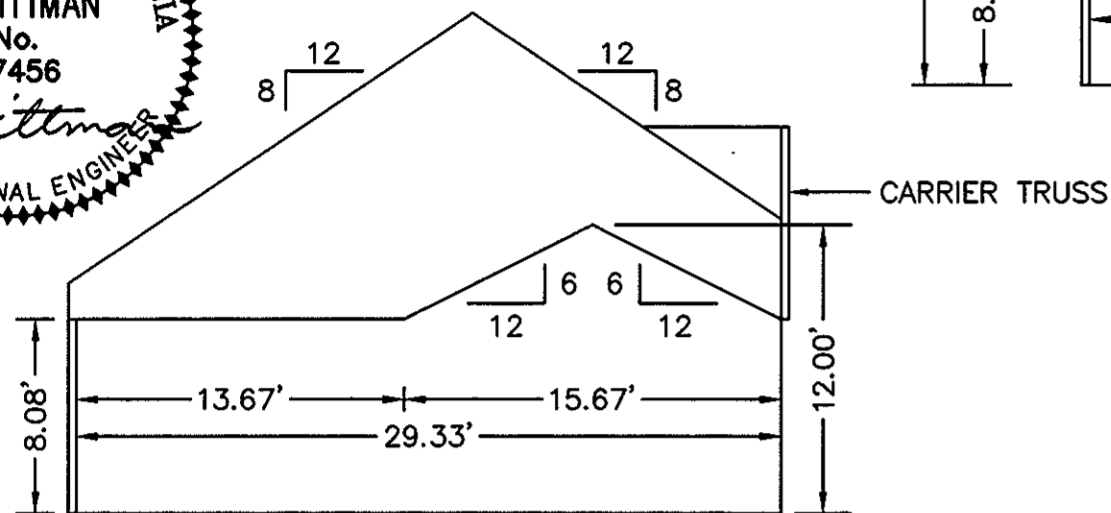


THE UNDERSIGNED CERTIFIES THAT THIS PLAN IS ACCURATE AND COMPLIES WITH THE PROVISIONS OF THE CODE OF VIRGINIA SECTION 55-79.58 (b) AND ALL UNITS DEPICTED HEREON HAVE BEEN SUBSTANTIALLY COMPLETED.

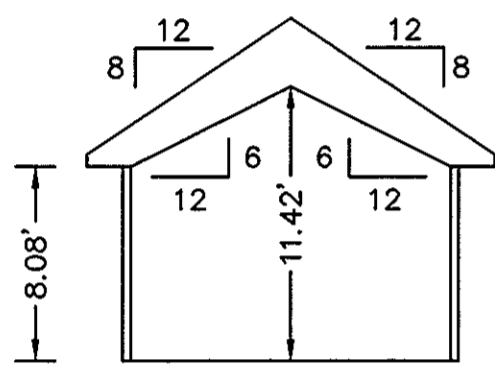
SIGNED: *C.L. Pittman* DATE: 10/13/2000
C.L. PITTMAN, P.E.



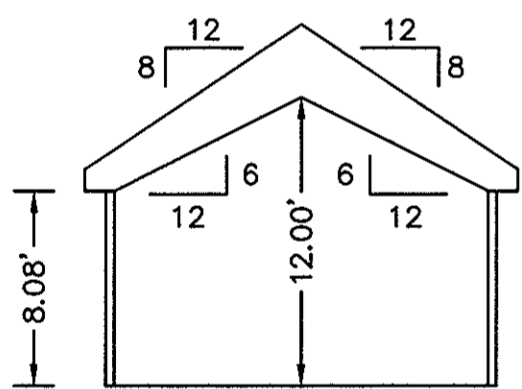
SECTION F-F



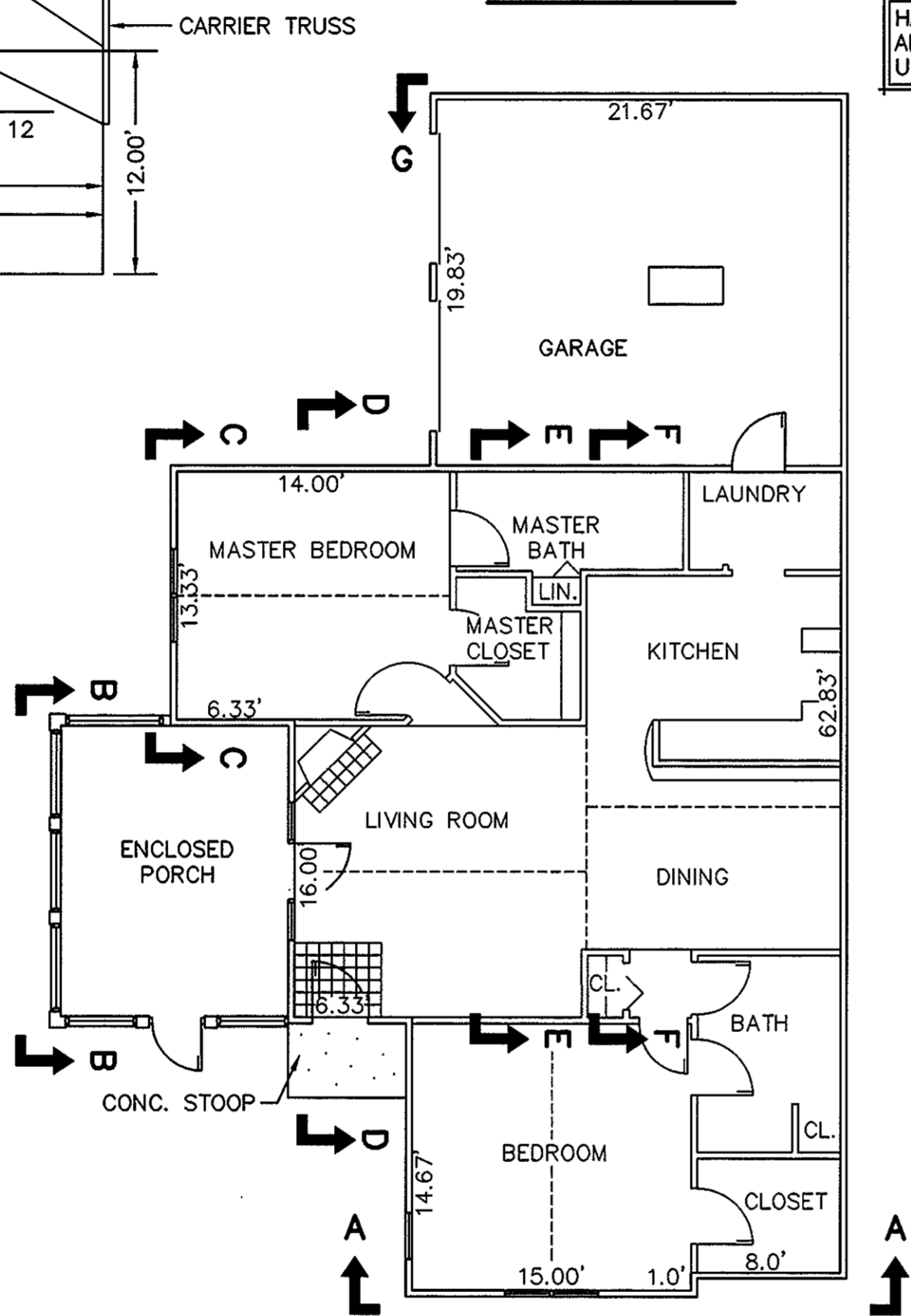
SECTION E-E



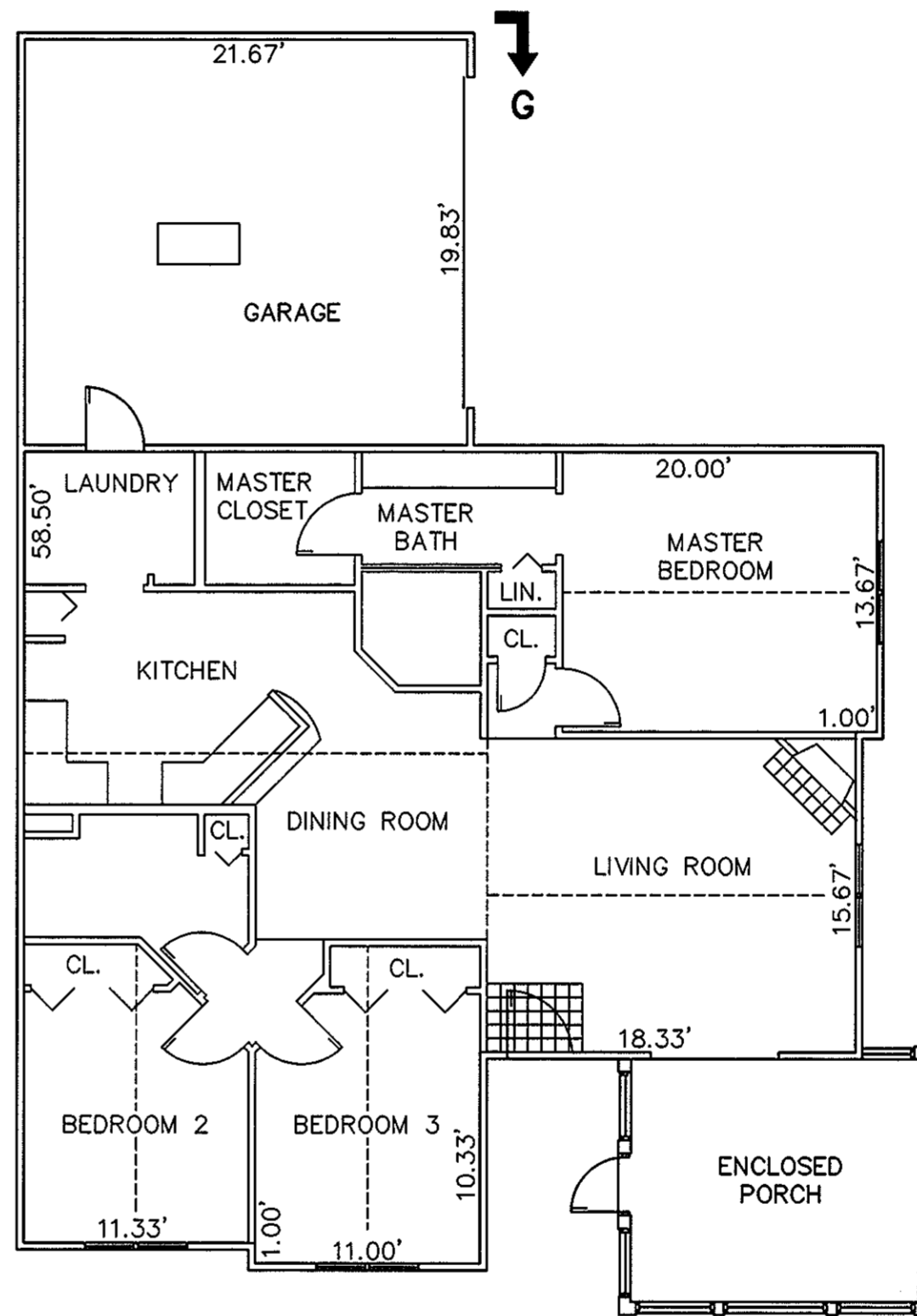
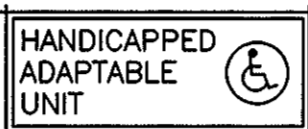
SECTION C-C



SECTION B-B
ENCLOSED PORCH



BUILDING 15-1 & 15-3 - ABBEY
FLOOR PLAN
W/ ENCLOSED PORCH



BUILDING 15-2 & 15-4 - CANTERBURY
FLOOR PLAN
W/ ENCLOSED PORCH

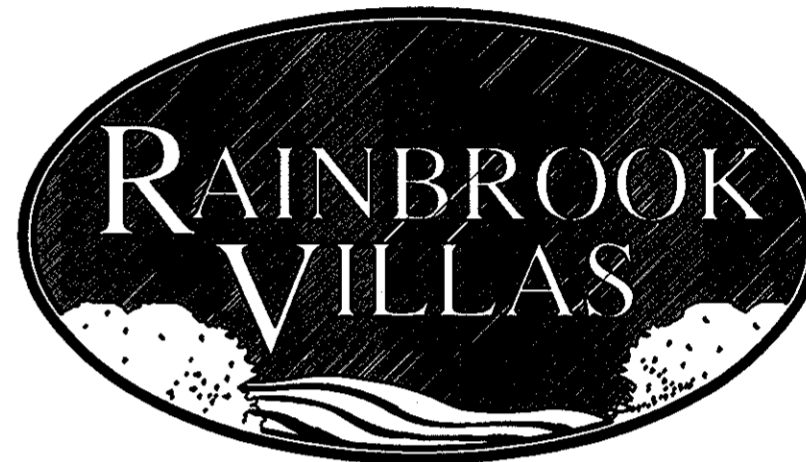


EXHIBIT "D"
PLAT OF
RAINBROOK VILLAS
A CONDOMINIUM
PHASE I
SHEET 3 OF 4
GRAFTON DISTRICT - COUNTY OF YORK, VIRGINIA
SCALE: 1/8" = 1'-0" OCTOBER 13, 2000
0 4 8 16 24 36 FEET
GRAPHIC SCALE
THE SIRINE GROUP, LTD.
SURVEYORS • ENGINEERS • PLANNERS
4794 GEORGE WASHINGTON MEMORIAL HIGHWAY
U.S. ROUTE 17
P.O. BOX 450
WHITE MARSH, VIRGINIA 23183

APPROVED:
YORK COUNTY BOARD OF SUPERVISORS

BY: *Al Maddalena*

DATE: 10/17/00

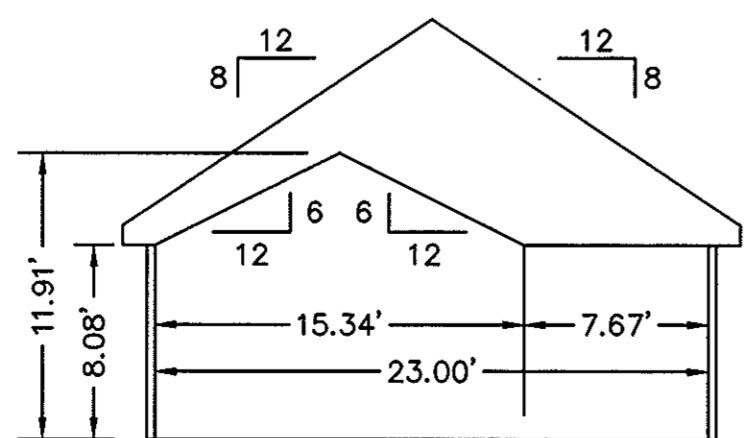
NOTES:
1. ALL BUILDING DIMENSIONS SHOWN HEREON ARE INTERIOR DIMENSIONS AND ARE IN FEET.

STATE OF VIRGINIA
COUNTY OF YORK

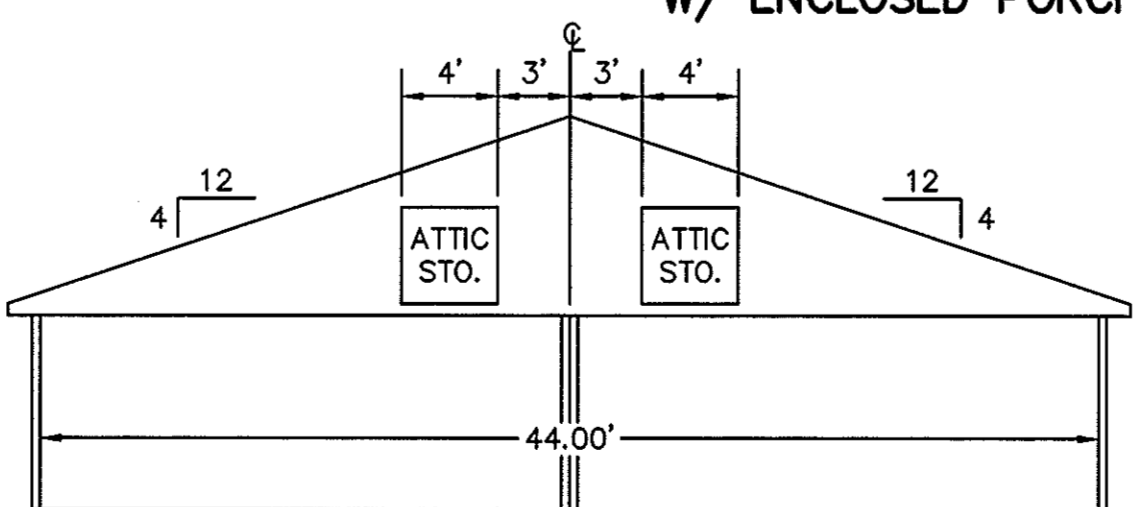
IN THE CLERK'S OFFICE OF THE CIRCUIT COURT FOR THE COUNTY OF YORK THE 18 DAY OF October, 2000, THIS PLAT WAS PRESENTED AND ADMITTED TO RECORD AS THE LAW DIRECTS IN PLAT BOOK 13, PAGE 187.

TESTE: *Lynn S. Jenkins*
CLERK

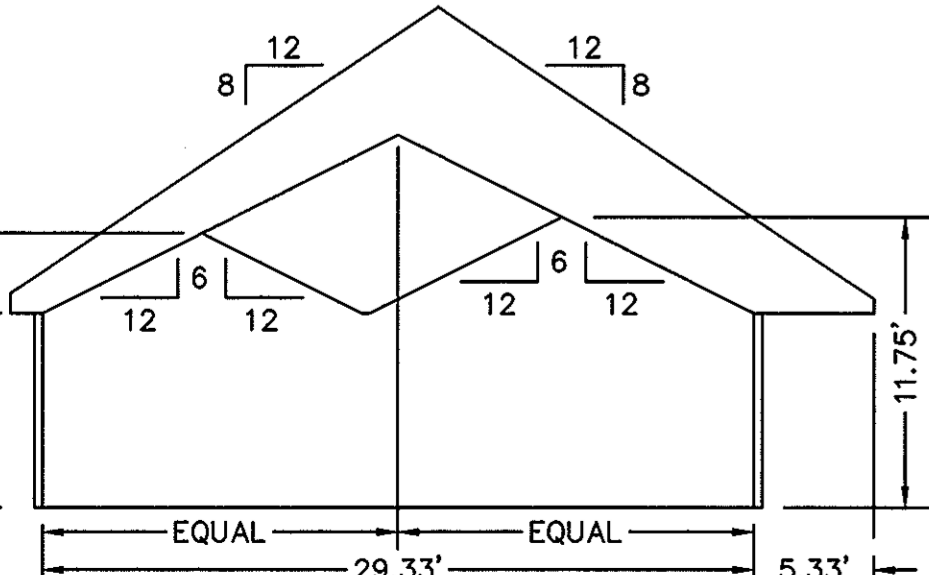
BY: *Stacy White*



SECTION A-A



SECTION G-G
GARAGE



SECTION D-D