

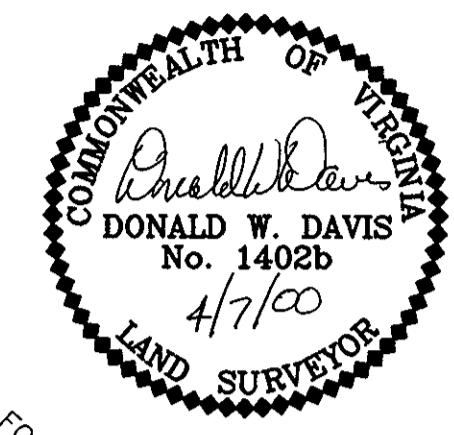
PROSPECT PARK

GRAFTON MAGISTERIAL DISTRICT

COUNTY OF YORK, VIRGINIA
SCALE: 1" = 60' DATE: 7 APRIL 2000

DAVIS & ASSOCIATES, P.C.

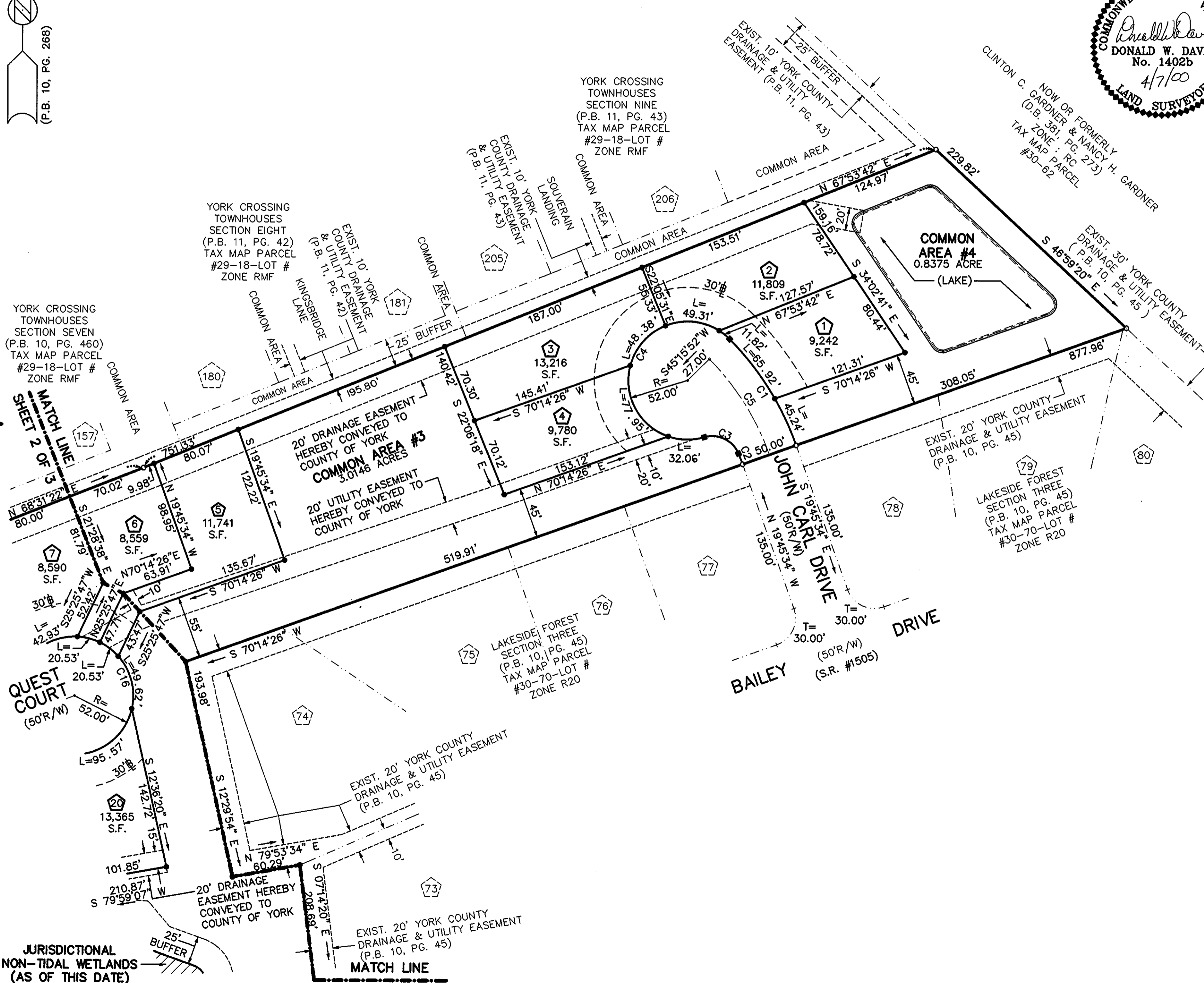
SURVEYORS - PLANNERS
3630 GEORGE WASHINGTON
MEMORIAL HIGHWAY - SUITE "G"
YORKTOWN, VIRGINIA 23693



0 30 60 120
GRAPHIC SCALE

SHEET 3 OF 3
- SYMBOLS -

- DENOTES MINIMUM BUILDING SETBACK LINE
- DENOTES DRAINAGE EASEMENT HEREBY CONVEYED TO COUNTY OF YORK
- DENOTES UTILITY EASEMENT HEREBY CONVEYED TO COUNTY OF YORK
- DENOTES IRON PIPE FOUND
- DENOTES IRON PIPES TO BE SET AT ALL PROPERTY LINE JUNCTURES
- DENOTES CONCRETE MONUMENT FOUND
- DENOTES CONCRETE MONUMENT TO BE SET



APPROVED
YORK COUNTY BOARD OF SUPERVISORS

BY: Al Maddalena
PLAT APPROVING AGENT

DATE: 10/17/00

STATE OF VIRGINIA
COUNTY OF YORK
IN THE CLERK'S OFFICE OF THE CIRCUIT
COURT FOR THE COUNTY OF YORK THE 25
DAY OF Oct 2000, THIS MAP WAS
PRESENTED AND ADMITTED TO RECORD AS
THE LAW DIRECTS IN PLAT BOOK 13,
PAGE 19a.

TESTE: Lynn S. Jenkins
CLERK

BY: Stacy White D.C.

JURISDICTIONAL
NON-TIDAL WETLANDS
(AS OF THIS DATE)

MATCH LINE
SHEET 2 OF 3