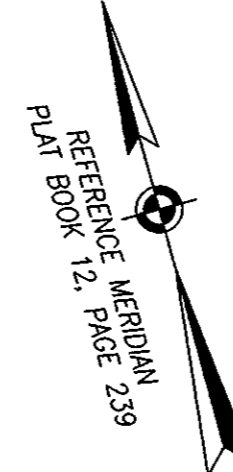


NUMBER	DIRECTION	DISTANCE
L1	S 10°30'00" W	20.56'
L2	S 10°39'11" W	11.81'
L3	S 15°21'38" W	16.97'
L4	N 74°38'22" W	9.97'
L5	S 13°10'58" E	25.73'
L6	N 74°38'22" W	7.09'
L7	S 15°21'38" W	23.37'
L8	N 74°38'22" W	55.03'
L9	N 74°38'22" W	37.00'
L10	N 15°21'38" E	73.14'
L11	N 74°38'22" W	47.01'
L12	N 15°21'38" E	83.97'

NUMBER	C1	C2
RADIUS	20.00	10.00
DELTA ANGLE	96°15'30"	84°03'00"
ARC LENGTH	33.60	14.67
TANGENT	22.31	9.01
CHORD LENGTH	29.79	13.39
CHORD DIRECTION	S 58°37'45" W	N 34°20'15" W

Filed in the Clerk's Office, Circuit Court, York Co., VA  
 the 13 day of December, 2000  
 Teste: Lynn S. Jenkins, Clerk  
 by Stacy White D.C.  
 Plat Book No. 13 Page 223



RESUBDIVISION  
 &  
 RIGHT-OF-WAY DEDICATION PLAT  
 OF PROPERTY STANDING IN THE NAME OF  
**BRISTOL-CARDIFF CAPITOL IV. L.L.C.**  
 CITY OF POQUOSON, VIRGINIA

DATE: 11-21-00 SHEET 2 OF 2 SCALE: 1"=50'  
 PROJECT NO: 00-481 DRAWN BY: R.E.D.

**THOMAS LAND SURVEYING, P.C.**  
 SURVEYORS-PLANNERS  
 753 THIMBLE SHOALS BLVD. SUITE 2-A  
 NEWPORT NEWS, VIRGINIA 23606  
 (757) 873-2770

