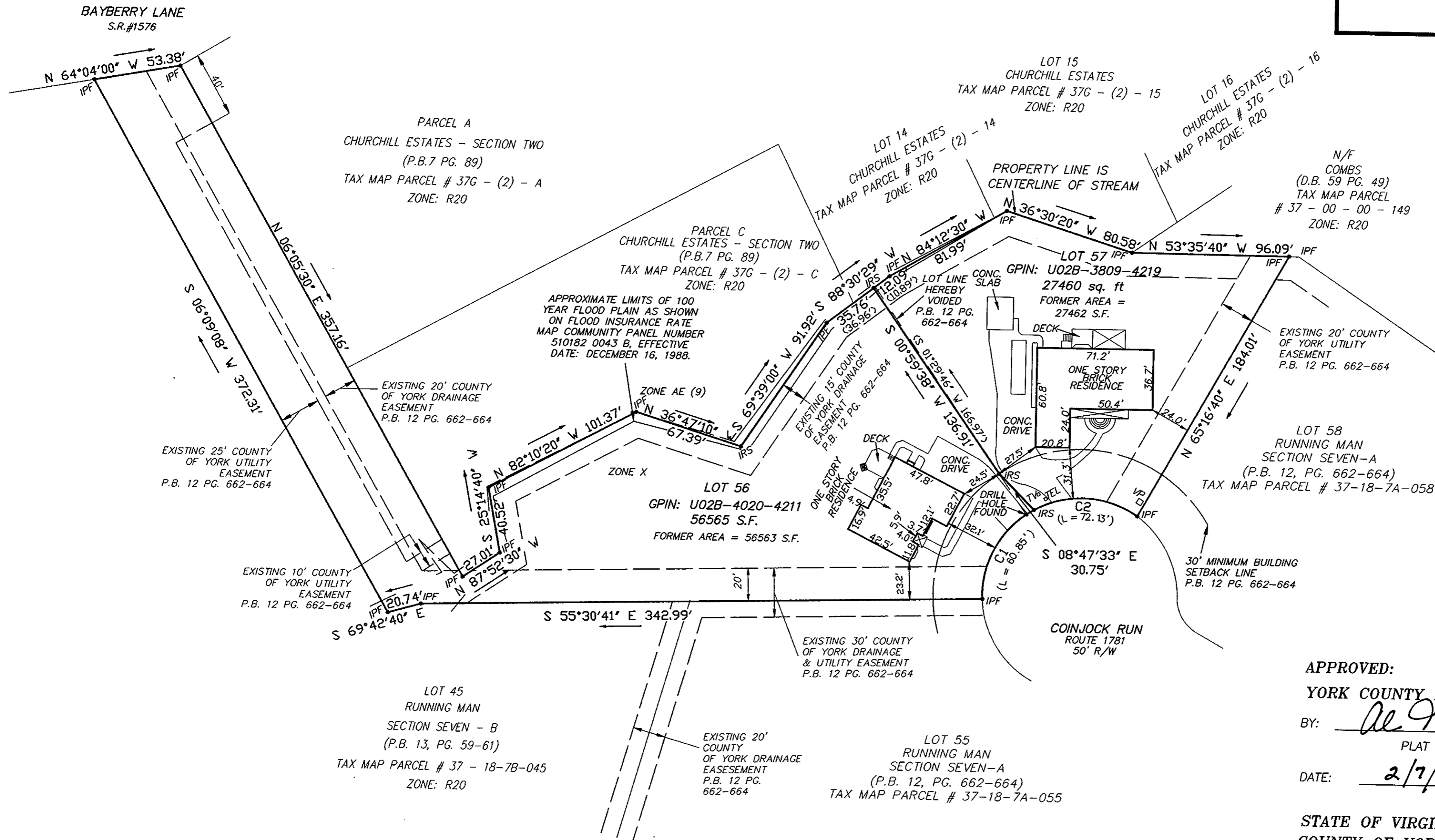
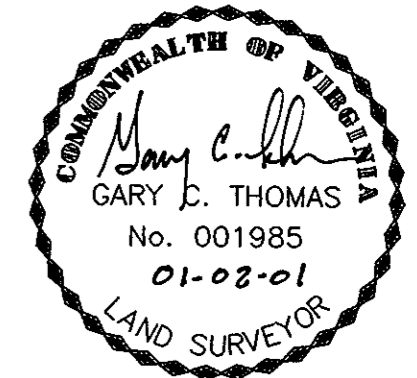


RESUBDIVISION
OF
LOTS 56 & 57
RUNNING MAN
SECTION SEVEN-A
BETHEL MAGISTERIAL DISTRICT
COUNTY OF YORK, VIRGINIA

DATE: 10-03-00 SHEET 2 OF 2 SCALE: 1"=50'
PROJECT NO: 99-528 DRAWN BY: T.C.C.

THOMAS LAND SURVEYING, P.C.
SURVEYORS-PLANNERS
753 THIMBLE SHOALS BLVD, SUITE 2-A
NEWPORT NEWS, VIRGINIA 23606
(757) 873-2770



APPROVED:
YORK COUNTY BOARD OF SUPERVISORS
BY: Al Maddalena
PLAT APPROVING AGENT

DATE: 2/7/01

STATE OF VIRGINIA
COUNTY OF YORK

IN THE CLERK'S OFFICE OF THE CIRCUIT COURT FOR
THE COUNTY OF YORK, THE 9 DAY OF Feb, 2001
THIS MAP WAS PRESENTED AND ADMITTED TO RECORD AS
THE LAW DIRECTS IN PLAT BOOK 13, PAGE 242.

TESTE: Lynn S. Jenkins
CLERK

BY: Stacy White D.C.

(S 01' 29' 46" W 166.97') DENOTES PLATTED METES & BOUNDS
PER P.B. 12 PG. 662 - 664

NUMBER	RADIUS	DELTA	ARC	TANGENT	CHORD BEARING	CHORD
C1	60.00	63°22'39"	66.36	37.04	N 65°03'54" E	63.03
C2	60.00	63°37'37"	66.62	37.22	S 51°25'59" E	63.26

