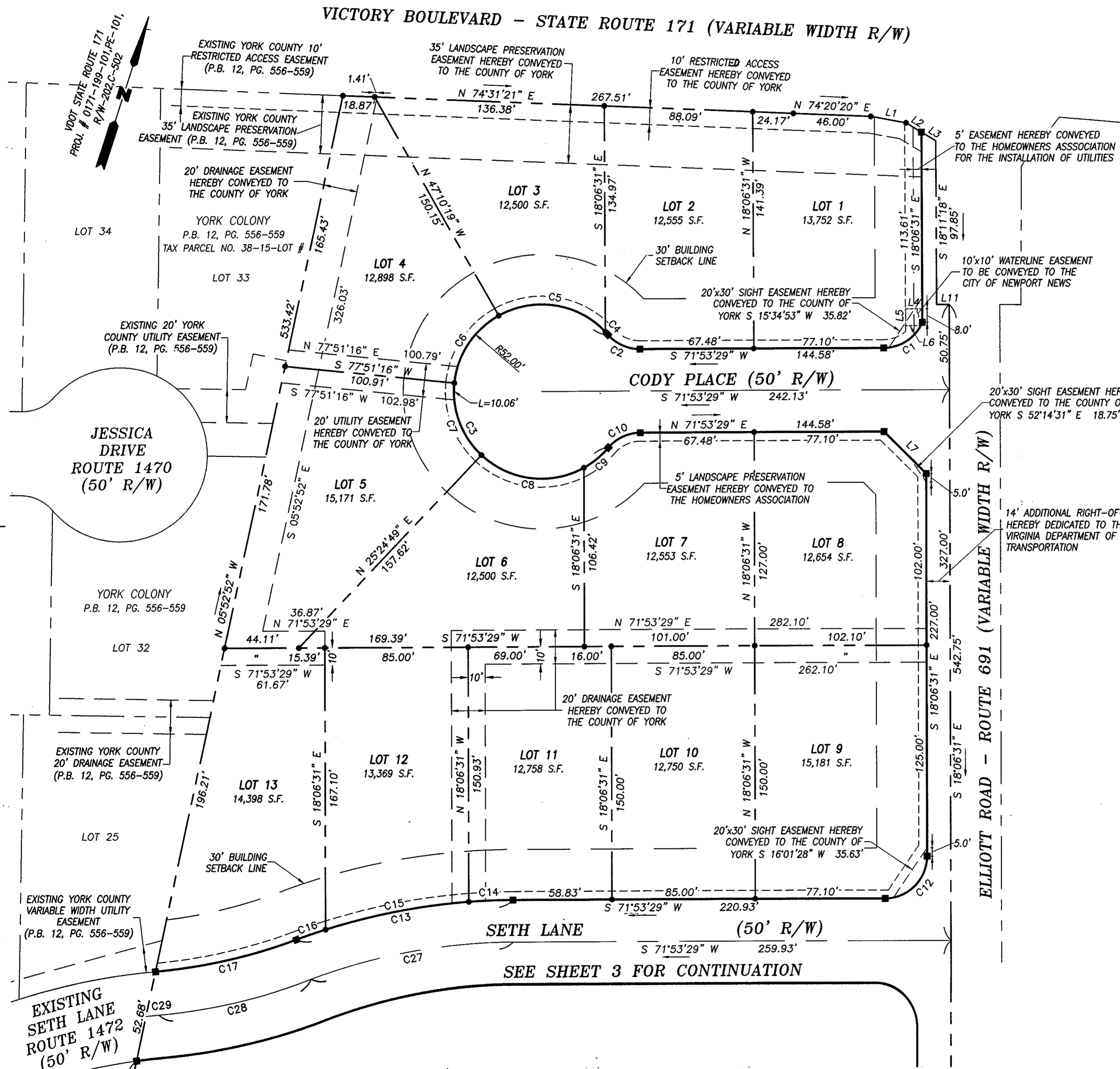
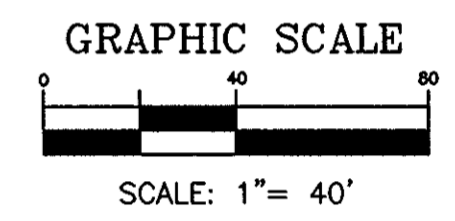


PLAT OF SUBDIVISION
VICTORY MEADOWS
 PHASE ONE
 BETHEL MAGISTERIAL DISTRICT
 COUNTY OF YORK, VIRGINIA

DATE: 01/23/01 SHEET 2 OF 4 SCALE: 1"=40'
 PROJECT NO: 30800.00 DRAWN BY: DWP

VHB Vanasse Hangen Brustlin, Inc.
 Transportation Land Development Environmental Services
 11832 Rock Landing Drive, Suite 203
 Newport News, Virginia 23606
 (757) 873-3386 • FAX (757) 873-0757



NOTE:
 SEE SHEET FOUR FOR LINE AND CURVE DATA TABLES

APPROVED:
YORK COUNTY BOARD OF SUPERVISORS

BY: Al Maddalena
 PLAT APPROVING AGENT
 DATE: 3/6/01

STATE OF VIRGINIA
COUNTY OF YORK

IN THE CLERK'S OFFICE OF THE CIRCUIT COURT FOR THE COUNTY OF YORK, THE 6th DAY OF March, 2001. THIS MAP WAS PRESENTED AND ADMITTED TO RECORD AS THE LAW DIRECTS IN PLAT BOOK 13, PAGE 259.

TESTE: Lynn S. Jenkins 3:50
 CLERK

BY: [Signature]