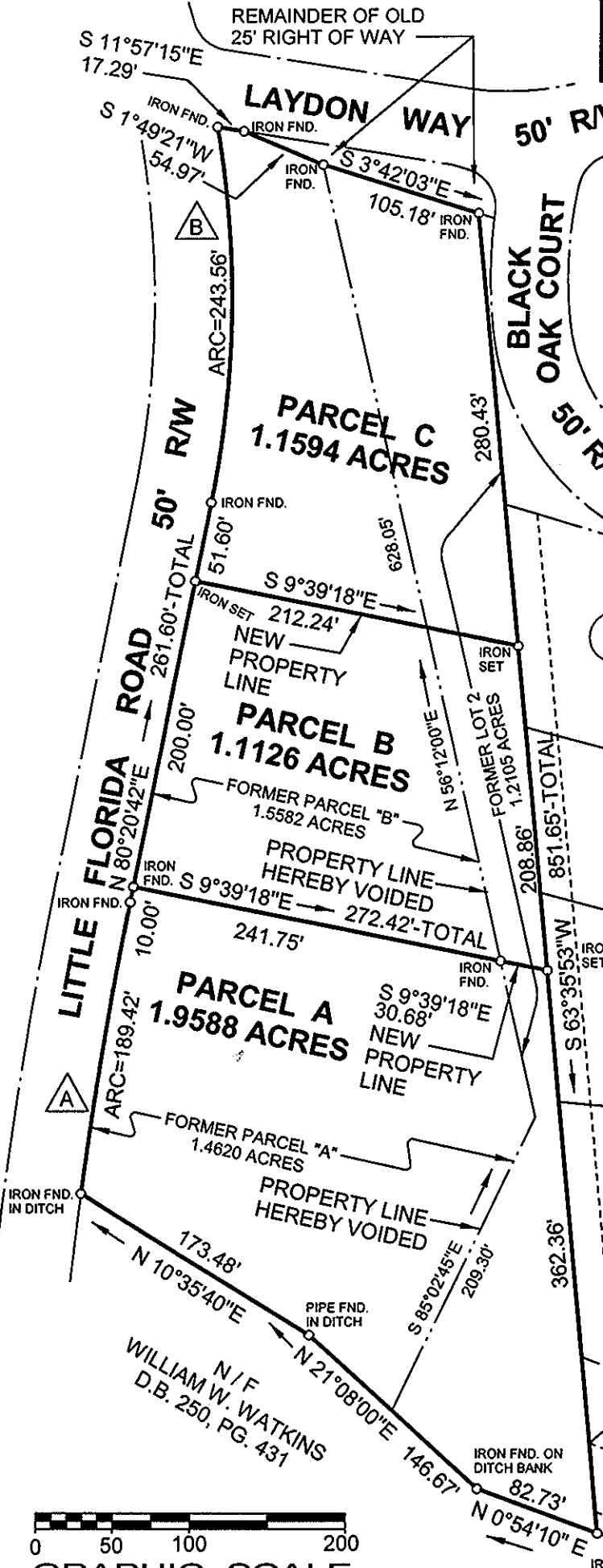


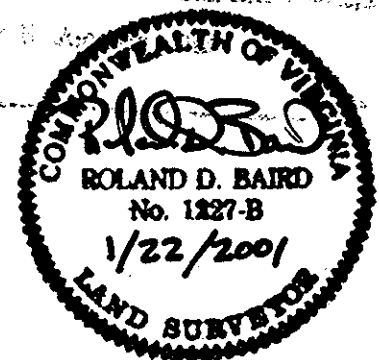
CURVE DATA						
NO.	ARC	RADIUS	TANGENT	DELTA	CHORD	CHORD BEARING
A	189.42'	2839.79'	94.75'	3°49'19"	189.39'	N 78°26'02" E
B	243.56'	661.62'	123.17'	21°05'31"	242.18'	N 69°47'56" E



Filed in the Clerk's Office, Circuit Court, York Co., VA
 the 20 day of April 2001
 Teste: Lynn S. Jankin, Clerk
 by Runde Hughes D.D.

LEGAL REFERENCES
 INSTRUMENT NO. 5142 @ PG. 173
 INSTRUMENT NO. 12983 @ PG. 394
 W.B. 73, PG. 100
 D.B. 38, PG. 521
 D.B. 38, PG. 524-PLAT

THE HOLLYS
 P.B. 13, PG. 129



PROPERTIES OF
 LAND-VENTURE DELVELOPERS AND BUILDERS, INC.

BOUNDARY LINE ADJUSTMENT PLAT SHOWING
PARCELS A, B, & C
 BEING THE RESULTS OF BOUNDARY LINE
 ADJUSTMENTS BETWEEN PARCELS A & B OF
 THE J. T. AMORY, JR., ESTATE AND
 LOT 2 OF THE JOHN TOPPING ESTATE
 CITY OF POQUOSON, VIRGINIA

JOHNSON-BAIRD AND ASSOCIATES
 CIVIL ENGINEERING AND LAND SURVEYING
 1538 WEST QUEEN STREET - HAMPTON, VIRGINIA - 23669-3645

SCALE: 1" = 100'
 DATE: JAN. 22, 2001
 FILE NO. 99-155W1