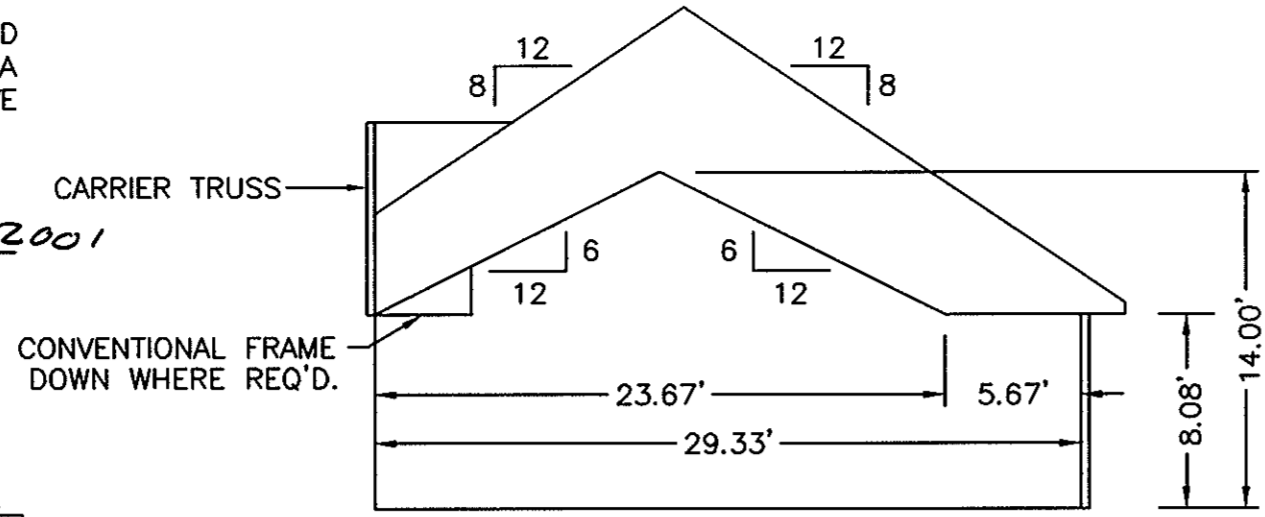
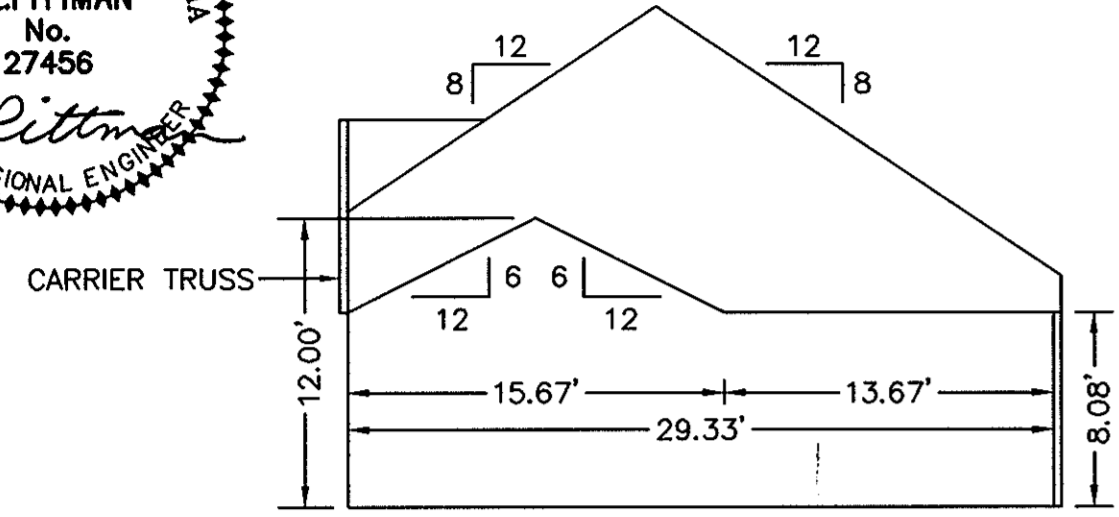


THE UNDERSIGNED CERTIFIES THAT THIS PLAN IS ACCURATE AND COMPLIES WITH THE PROVISIONS OF THE CODE OF VIRGINIA SECTION 55-79.58 (b) AND ALL UNITS DEPICTED HEREON HAVE BEEN SUBSTANTIALLY COMPLETED.

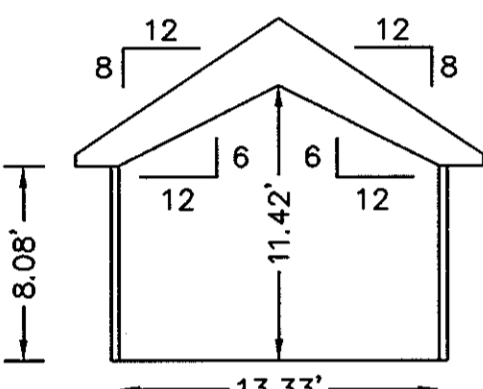
SIGNED: C.L. Pittman DATE: 6/14/2001  
C.L. PITTMAN, P.E.



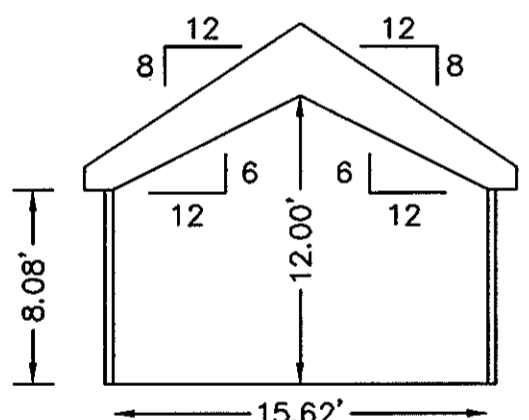
SECTION F-F



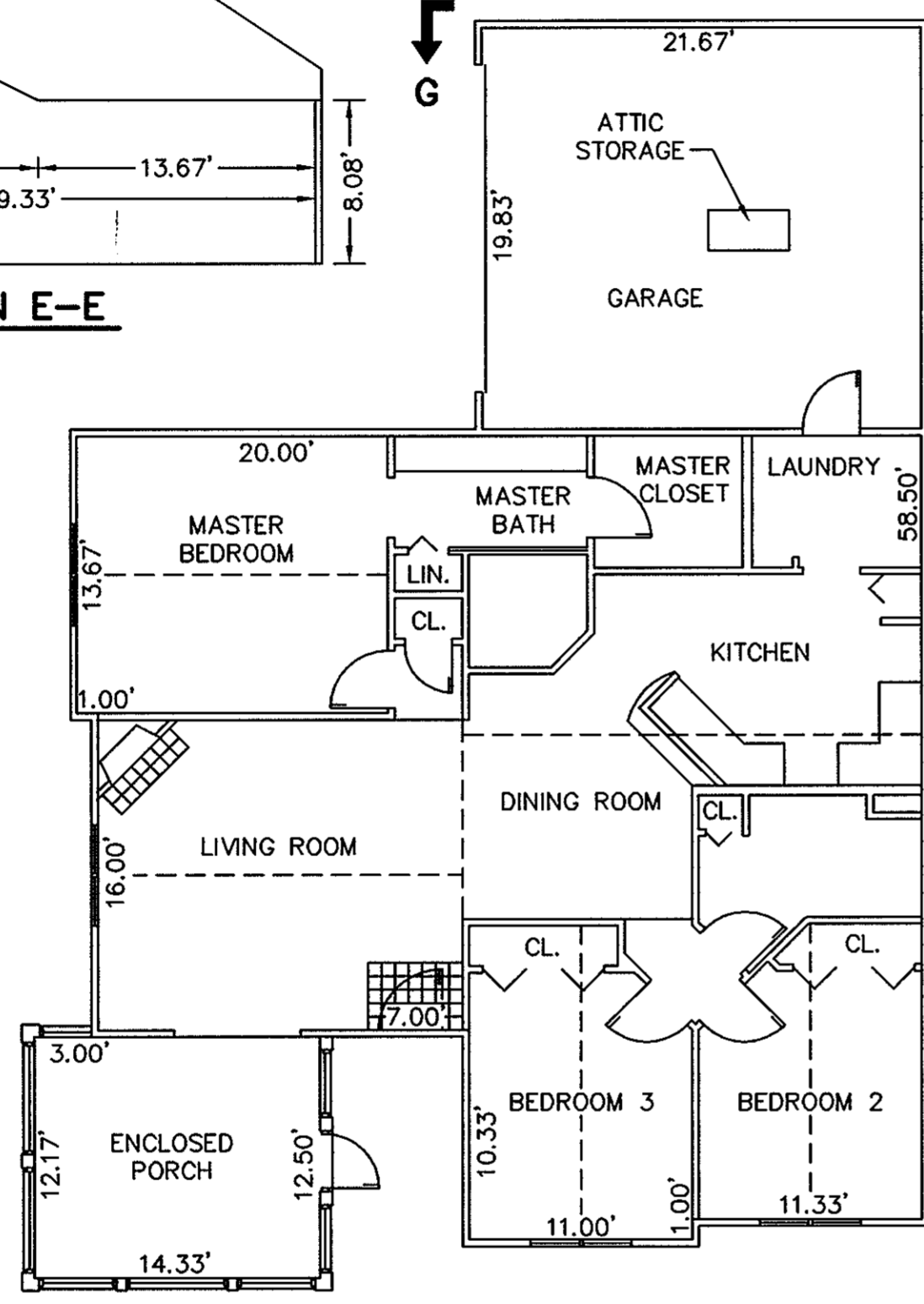
SECTION E-E



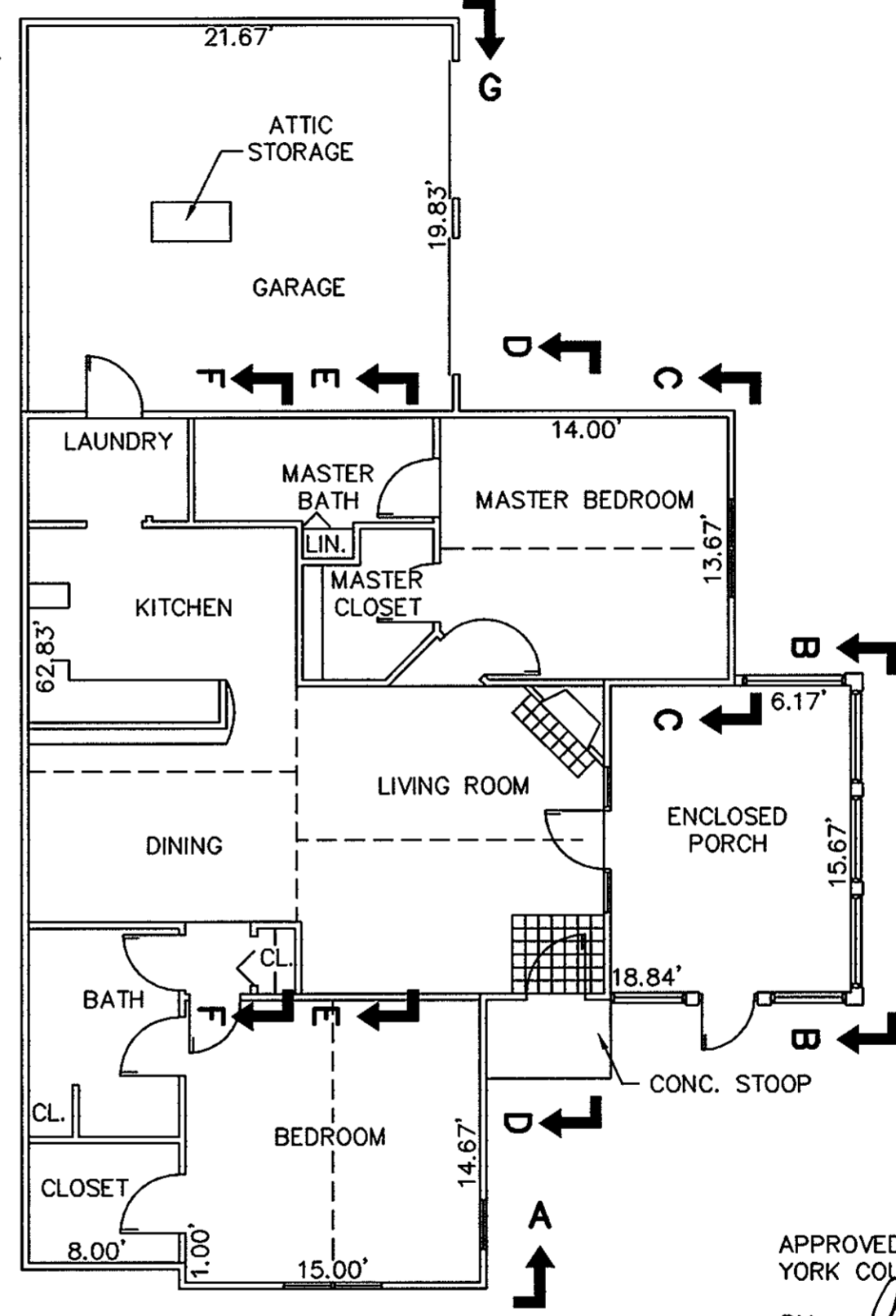
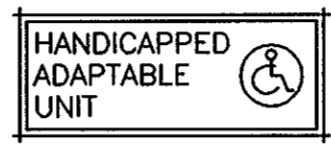
SECTION C-C



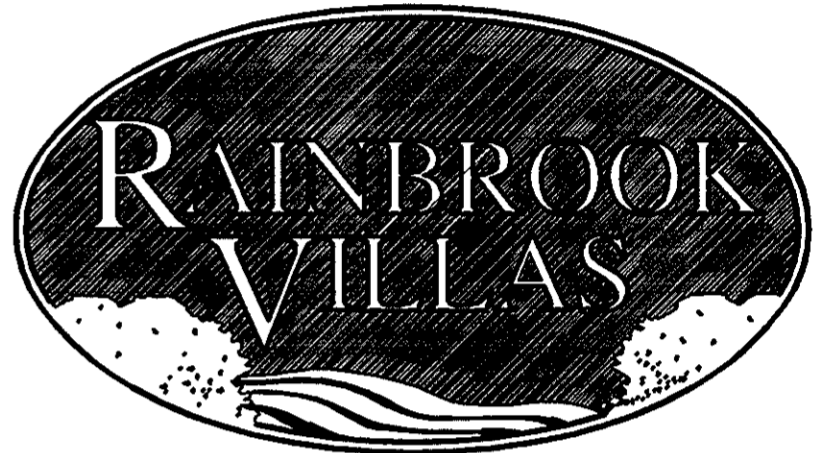
SECTION B-B ENCLOSED PORCH



BUILDING 21-1 & 21-3 - CANTERBURY  
FLOOR PLAN W/ ENCLOSED PORCH

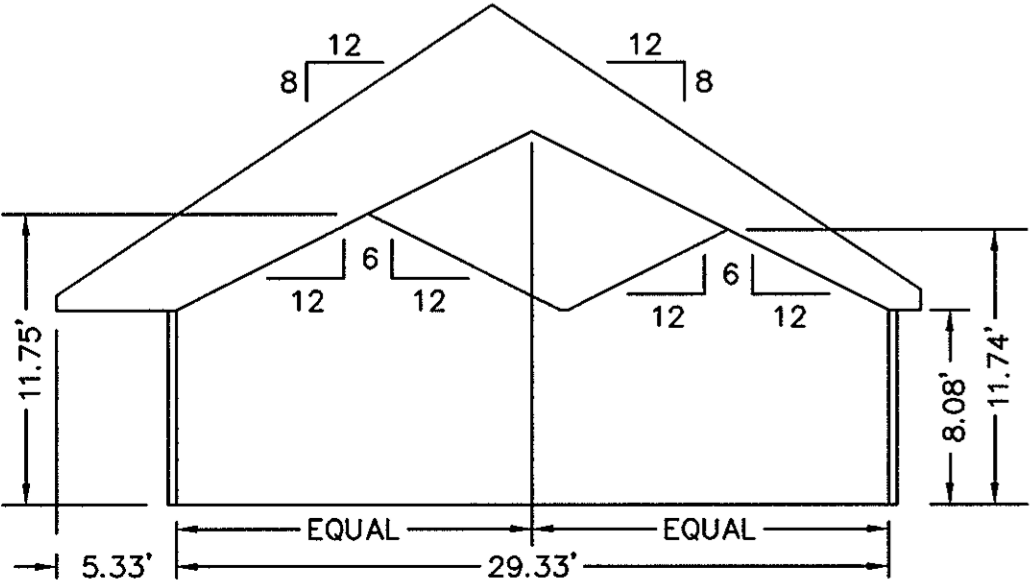


BUILDING 21-2 & 21-4 - ABBEY  
FLOOR PLAN W/ ENCLOSED PORCH

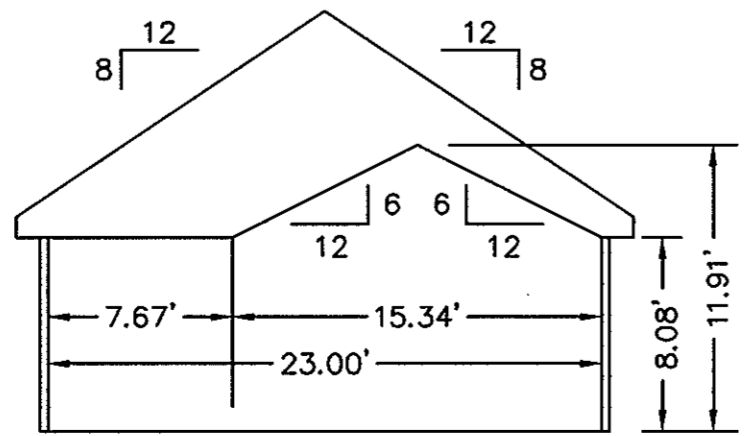


**EXHIBIT "D"**  
PLAT OF  
**RAINBROOK VILLAS**  
A CONDOMINIUM  
PHASE VIII  
SHEET 4 OF 4  
GRAFTON DISTRICT - COUNTY OF YORK, VIRGINIA  
SCALE: 1/8" = 1'-0" MARCH 28, 2001

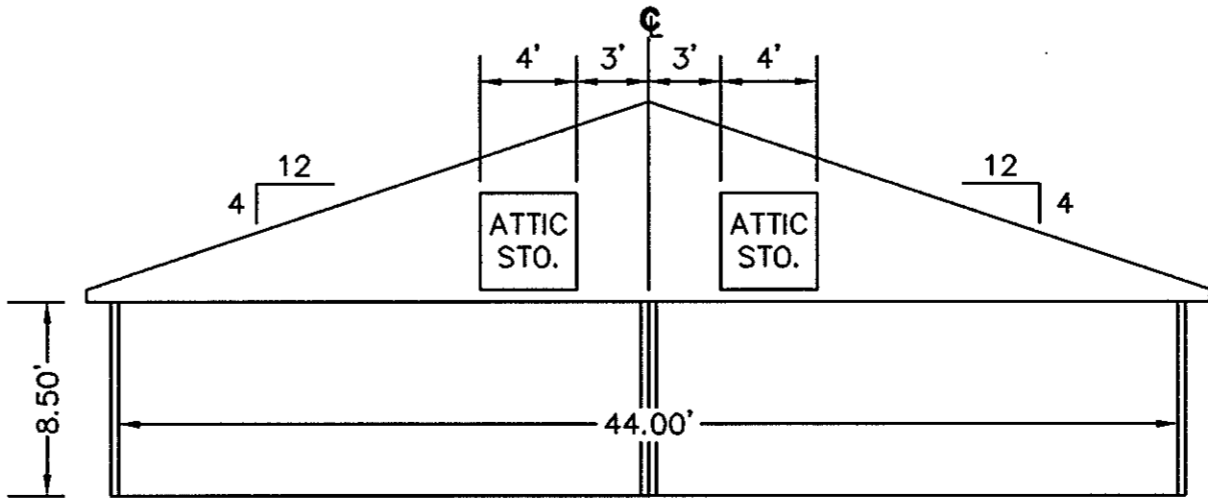
**THE SIRINE GROUP, LTD.**  
SURVEYORS • ENGINEERS • PLANNERS  
4794 GEORGE WASHINGTON MEMORIAL HIGHWAY  
U.S. ROUTE 17  
P.O. BOX 450  
WHITE MARSH, VIRGINIA 23183



SECTION D-D



SECTION A-A



SECTION G-G GARAGE

APPROVED:  
YORK COUNTY BOARD OF SUPERVISORS  
BY: Al Maddalena  
DATE: 6/18/01

NOTES:  
1. ALL BUILDING DIMENSIONS SHOWN HEREON ARE INTERIOR DIMENSIONS AND ARE IN FEET.

STATE OF VIRGINIA  
COUNTY OF YORK

IN THE CLERK'S OFFICE OF THE CIRCUIT COURT FOR THE COUNTY OF YORK THE 18 DAY OF June, 2001, THIS PLAT WAS PRESENTED AND ADMITTED TO RECORD AS THE LAW DIRECTS IN PLAT BOOK 13, PAGE 308.

TESTE: Lynn S. Jenkins  
CLERK  
BY: Rende Hughes