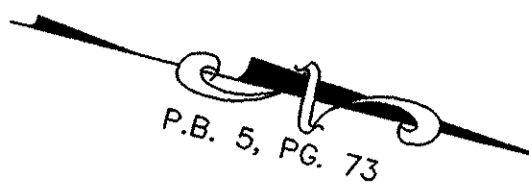


WAL MART REAL ESTATE  
BUSINESS TRUST  
TAX MAP # 37-1  
GPIN S03B-2811-3934  
(INSTRUMENT NO. 000022258, PG. 150)  
ZONED GB



SUBDIVISION OF THE  
PROPERTY OF  
**OVERYORK, LLC**  
A VIRGINIA LIMITED LIABILITY COMPANY  
BETHEL MAGISTERIAL DISTRICT  
COUNTY OF YORK, VIRGINIA

DATE: 05/30/01 SHEET 2 OF 2 SCALE: 1"=50'  
PROJECT NO: 31049.00 DRAWN BY: DWP



WAL MART REAL ESTATE  
BUSINESS TRUST  
TAX MAP # 37-1  
GPIN S03B-2811-3934  
(INSTRUMENT NO. 000022258, PG. 150)  
ZONED GB

EXISTING  
20' YORK COUNTY  
UTILITY EASEMENT  
(INSTRUMENT NO.  
000020925, PG. 328)

EXISTING 20' YORK COUNTY  
DRAINAGE EASEMENT HEREBY  
VACATED  
(P.B. 13, PG. 220-221)

**PARCEL B**  
1.186 ACRES

20' UTILITY EASEMENT HEREBY  
CONVEYED TO YORK COUNTY  
(SEE DETAIL)

20' AND VARIABLE  
DRAINAGE EASEMENT  
HEREBY CONVEYED TO  
THE COUNTY OF YORK

**JOSEPH W. MILLER,  
ETUX**  
RICH ACRES  
LOT 19  
TAX MAP # 36A(1)-19  
GPIN S03B-2748-4524  
(D.B. 789, PG. 802)  
ZONED R20

**MARY A. CLARK**  
RICH ACRES  
PT LOT 18  
TAX MAP # 36A(1)-18  
GPIN S03B-2856-4554  
(D.B. 292, PG. 281)  
ZONED R20

**SHEILA A. COKLEY**  
RICH ACRES  
PT LOT 18 & PT LOT 17  
TAX MAP # 36A(1)-17A & 18A  
GPIN S03B-2953-4580  
GPIN S03B-2916-4571  
(D.B. 584, PG. 86)  
ZONED R20

**PAUL S. NEMERGUT, ETUX**  
RICH ACRES  
LOT 17  
TAX MAP # 36A(1)-17  
GPIN S03B-3013-4597  
(D.B. 480, PG. 369)  
ZONED R20

**OVERYORK, LLC  
A VIRGINIA  
LIMITED LIABILITY COMPANY**  
TAX MAP # 36A(2)-33  
GPIN S03B-3189-4288  
(INSTRUMENT NO. 010002775)  
ZONED GB

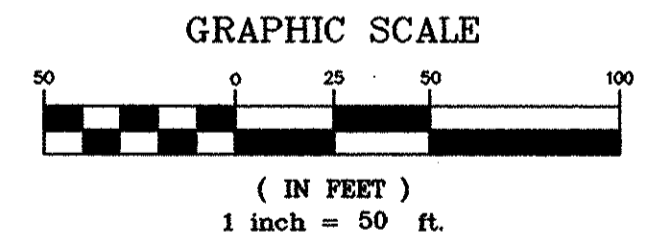
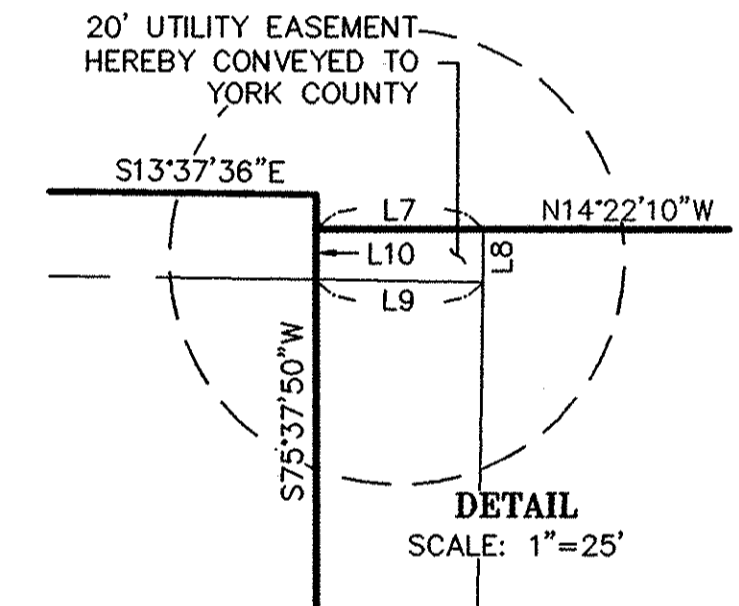
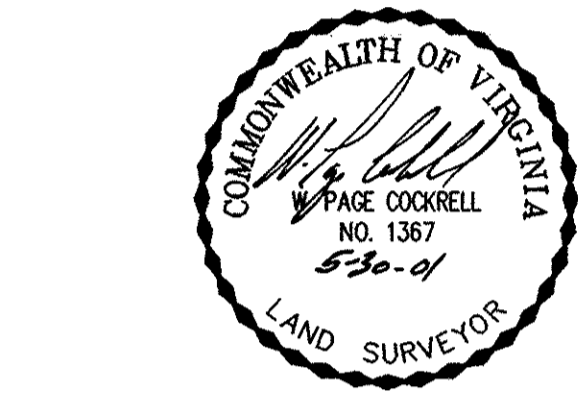
**PARCEL A**  
1.223 ACRES

**OVERYORK, LLC  
A VIRGINIA  
LIMITED LIABILITY COMPANY**  
TAX MAP # 36A(2)-35  
GPIN S03B-3140-4461  
(P.B. 13, PG. 220-221)

1-STORY  
BLOCK  
BUILDING

**C M VENTURES, LLC**  
RESUB LOT 15 & 16  
LOT 1  
RICH ACRES  
TAX MAP # 36A(7)-01  
GPIN S03B-3168-4599  
(D.B. 1010, PG. 818)  
ZONED GB

- LEGEND**
- Property Line
  - - - Adjoiner
  - - - Drainage Easement
  - - - Utility Easement
  - - - Access Easement
  - - - Setback Line
  - Monument Set
  - Iron Pin Set
  - ▨ Easement hereby Vacated



**APPROVED:**  
**YORK COUNTY BOARD OF SUPERVISORS**  
BY: *Al Maddalena*  
PLAT APPROVING AGENT  
DATE: *6/28/01*

**STATE OF VIRGINIA  
COUNTY OF YORK**

IN THE CLERK'S OFFICE OF THE CIRCUIT COURT FOR  
THE COUNTY OF YORK, THE *20th* DAY OF *June*, 2001.  
THIS MAP WAS PRESENTED AND ADMITTED TO RECORD AS  
THE LAW DIRECTS IN PLAT BOOK *13*, PAGE *315*.  
TESTE: *Lynn S. Jenkins* 3:30  
CLERK  
BY: *[Signature]*

**LINE TABLE**

LINE	BEARING	LENGTH
L1	S14°22'10"E	22.75'
L2	N20°04'48"W	29.27'
L3	N75°37'50"E	34.24'
L4	S14°22'10"E	20.22'
L5	S75°37'50"W	39.77'
L6	N13°37'36"W	21.02'
L7	N14°22'10"W	21.51'
L8	N75°37'50"E	6.90'
L9	S13°37'36"E	21.51'
L10	S75°37'50"W	6.62'

**GEORGE WASHINGTON MEMORIAL HIGHWAY**  
U. S. ROUTE 17  
(160' R/W)

**CURVE DATA TABLE**

NUMBER	RADIUS	DELTA	ARC LENGTH	TANGENT	CHORD	CHORD BEARING
C1	50.00'	18°38'44"	16.27'	8.21'	16.20'	N 66°18'28" E