

71

PLAT SHOWING
A
RESUBDIVISION
OF LOT 5 & LOT 6
CHESAPEAKE WATCH

GRAFTON DISTRICT
YORK COUNTY, VIRGINIA
DATE: JUNE 25, 2001 SCALE 1" = 100'
REVISED AUGUST 6, 2001
REVISED AUGUST 27, 2001

SHEET 2 OF 2

CURVE TABLE						
CURVE	RADIUS	LENGTH	TANGENT	CHORD	CHORD BEARING	DELTA
C1	1500.00'	98.99'	49.51'	98.98'	N78°30'56"W	3°46'53"
C2	1500.00'	99.39'	49.72'	99.38'	N74°43'36"W	3°47'48"

LINE TABLE--(EXISTING)		
LINE	LENGTH	BEARING
L1	270.00'	S14°15'55"W
L2	285.00'	S14°15'55"W
L3	330.00'	S14°15'55"W
L4	588.00'	S47°46'38"W
L5	60.00'	S29°15'55"W
L6	307'±	N62°36'50"E
L12	17.61'	S80°24'23"E

LINE TABLE--(NEW)		
LINE	LENGTH	BEARING
L11	375'±	S46°07'29"W

LINE TABLE --PROP EASEMENT		
LINE	LENGTH	BEARING
L13	195.17'	S16°23'02"W
L14	82.86'	S17°56'31"E

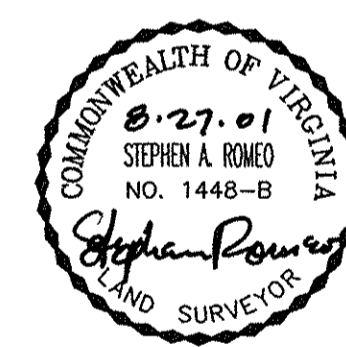
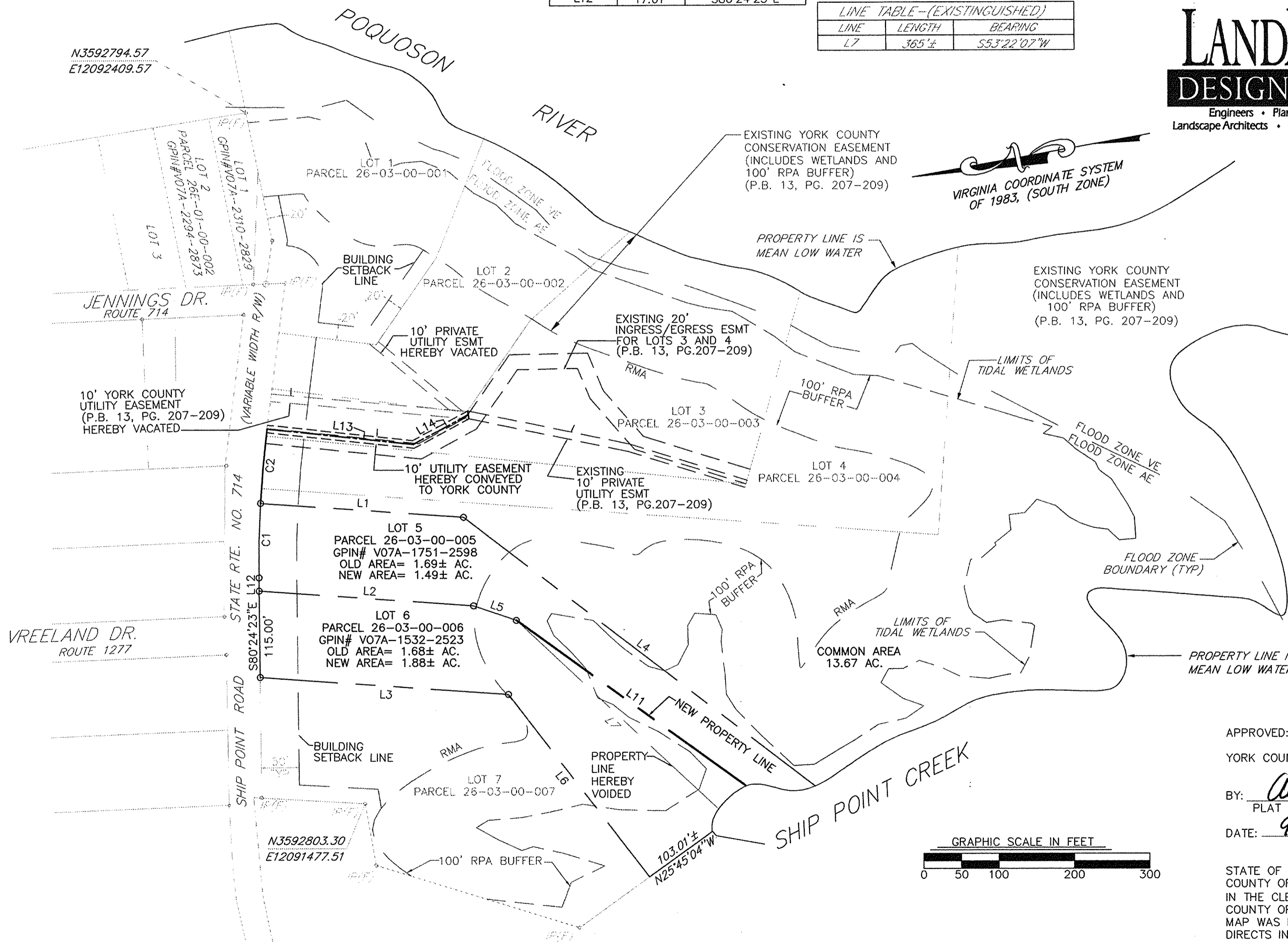
LINE TABLE--(EXISTINGUISHED)		
LINE	LENGTH	BEARING
L7	365'±	S53°22'07"W

**LANDMARK
DESIGN GROUP**
Engineers • Planners • Surveyors
Landscape Architects • Environmental Consultants

4029 Ironbound Road
Suite 100
Williamsburg, VA 23188
Tel. (757) 253-2975
Fax (757) 229-0049
Email: lmdg@landmarkdgb.com

5544 Greenwich Road
Suite 200
Virginia Beach, VA 23462
Tel. (757) 473-2000
Fax (757) 497-7933
Email: lmdg@landmarkdg.com

VIRGINIA COORDINATE SYSTEM
OF 1983, (SOUTH ZONE)



APPROVED:
YORK COUNTY BOARD OF SUPERVISORS
BY: Al Maddalena
PLAT APPROVING AGENT
DATE: 9/24/01

STATE OF VIRGINIA
COUNTY OF YORK
IN THE CLERK'S OFFICE OF THE CIRCUIT COURT FOR THE
COUNTY OF YORK THE 25 DAY OF Sept. 2001 THIS
MAP WAS PRESENTED AND ADMITTED TO RECORD AS THE LAW
DIRECTS IN PLAT BOOK 13 PAGE 3509
TESTE: Lynn S. Jenkins
CLERK
By: Natalie C. Owens