

GRIFFIN, CAROL EST. 1924  
 GRIFFIN, CAROL EST. 1924  
 GRIFFIN, CAROL EST. 1924  
 GRIFFIN, CAROL EST. 1924  
 GRIFFIN, CAROL EST. 1924

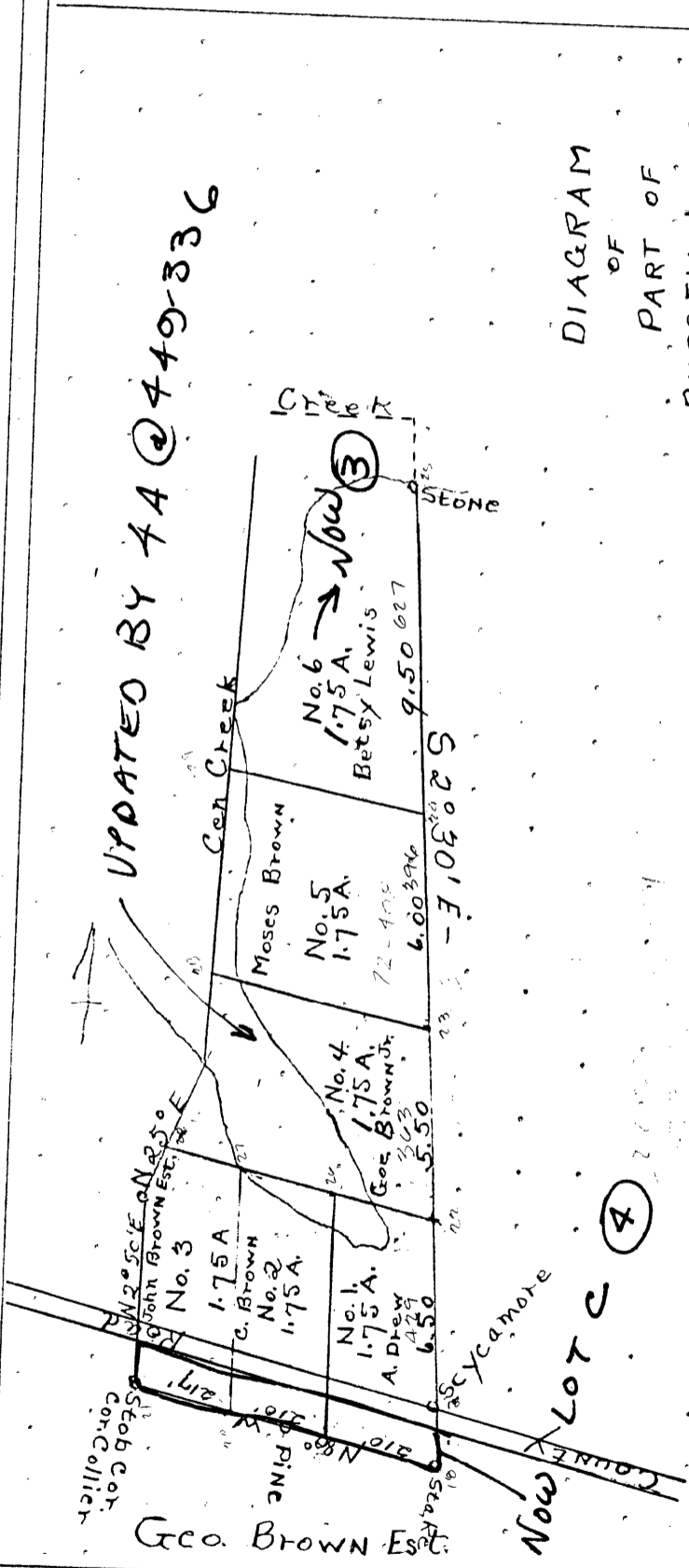


DIAGRAM  
 OF  
 PART OF  
 RUSSELL LAND  
 E. A. Temple,  
 C. E.

Virginia:

In the Clerk's Office of the Circuit Court of York County, the 8th day of  
 June, 1933. The foregoing Decree and Plat was presented and admitted to record as there-  
 in directed and indexed according to law at 12 o'clock M.

Teste: *Floyd Rollway*  
 Clerk.

30 F (1) LOTS 1 to 5