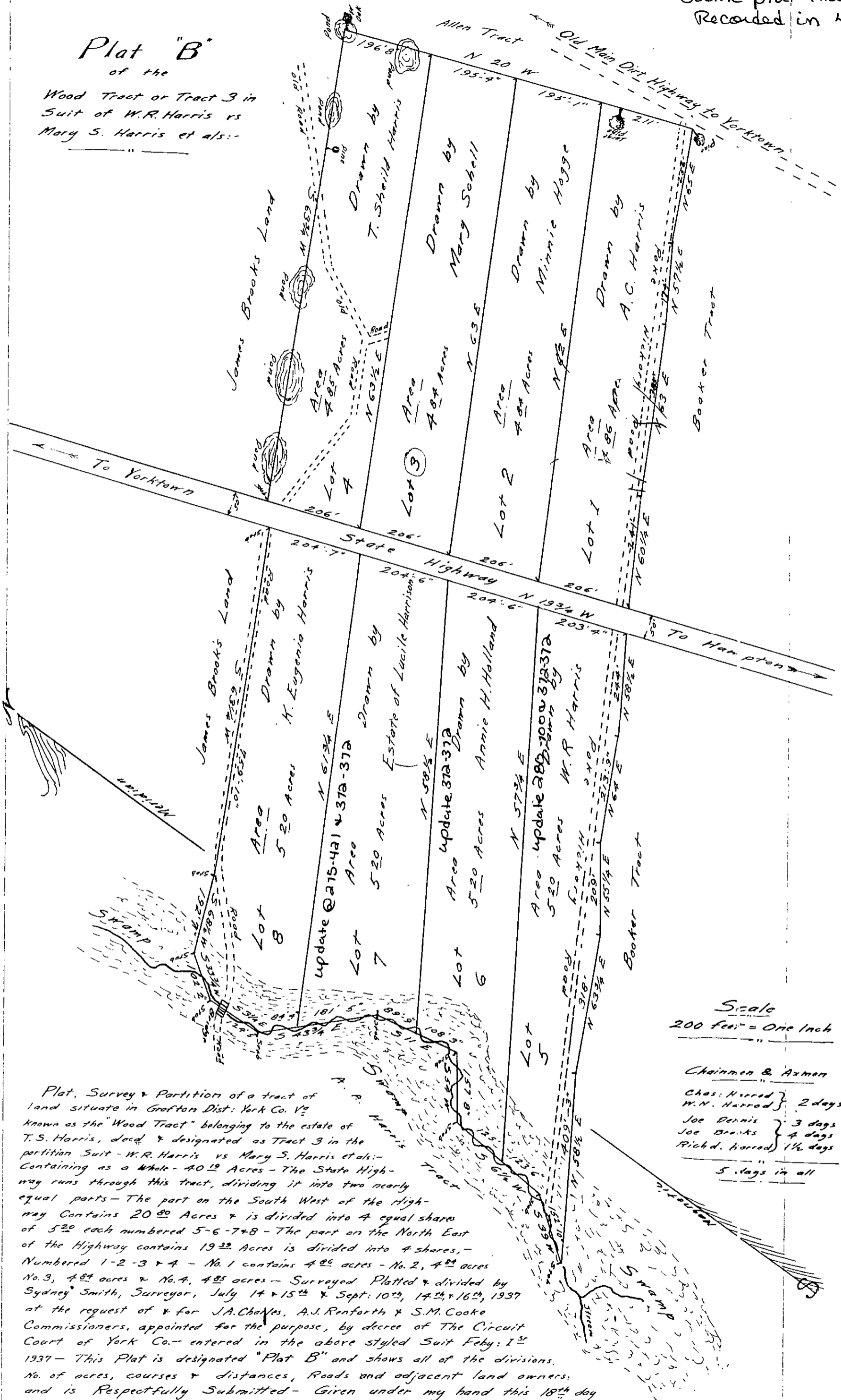


Same plat that is Recorded in 4-81

Plat "B"

of the
Wood Tract or Tract 3 in
Suit of W.R. Harris vs
Mary S. Harris et als:-



Scale
200 feet = One Inch

Chairmen & Axmen

Chas. Harrod	} 2 days
W.N. Harrod	
Joe Dennis	} 3 days
Joe Branks	
Richd. Harrod	} 1 1/2 days
5 days in all	

Plat, Survey & Partition of a tract of land situate in Grafton Dist: York Co. Va known as the "Wood Tract" belonging to the estate of T.S. Harris, dead & designated as Tract 3 in the partition Suit - W.R. Harris vs Mary S. Harris et als:- Containing as a Whole - 40¹⁹ Acres - The State Highway runs through this tract, dividing it into two nearly equal parts - The part on the South West of the Highway contains 20⁸⁰ Acres & is divided into 4 equal shares of 5²⁰ each numbered 5-6-7-8 - The part on the North East of the Highway contains 19²² Acres is divided into 4 shares, - Numbered 1-2-3 & 4 - No. 1 contains 4⁸⁶ acres - No. 2, 4⁸⁴ acres No. 3, 4⁸⁴ acres & No. 4, 4⁸⁵ acres - Surveyed Platted & divided by Sydney Smith, Surveyor, July 14 & 15th & Sept: 10th, 14th & 16th, 1937 at the request of & for J.A. Charles, A.J. Renforth & S.M. Cooke Commissioners, appointed for the purpose, by decree of The Circuit Court of York Co. - entered in the above styled Suit Feby: 1st 1937 - This Plat is designated "Plat B" and shows all of the divisions, No. of acres, courses & distances, Roads and adjacent land owners, and is Respectfully Submitted - Given under my hand this 18th day of Sept: 1937.

Sydney Smith, Surveyor

24C (1) 3, 4, & 8