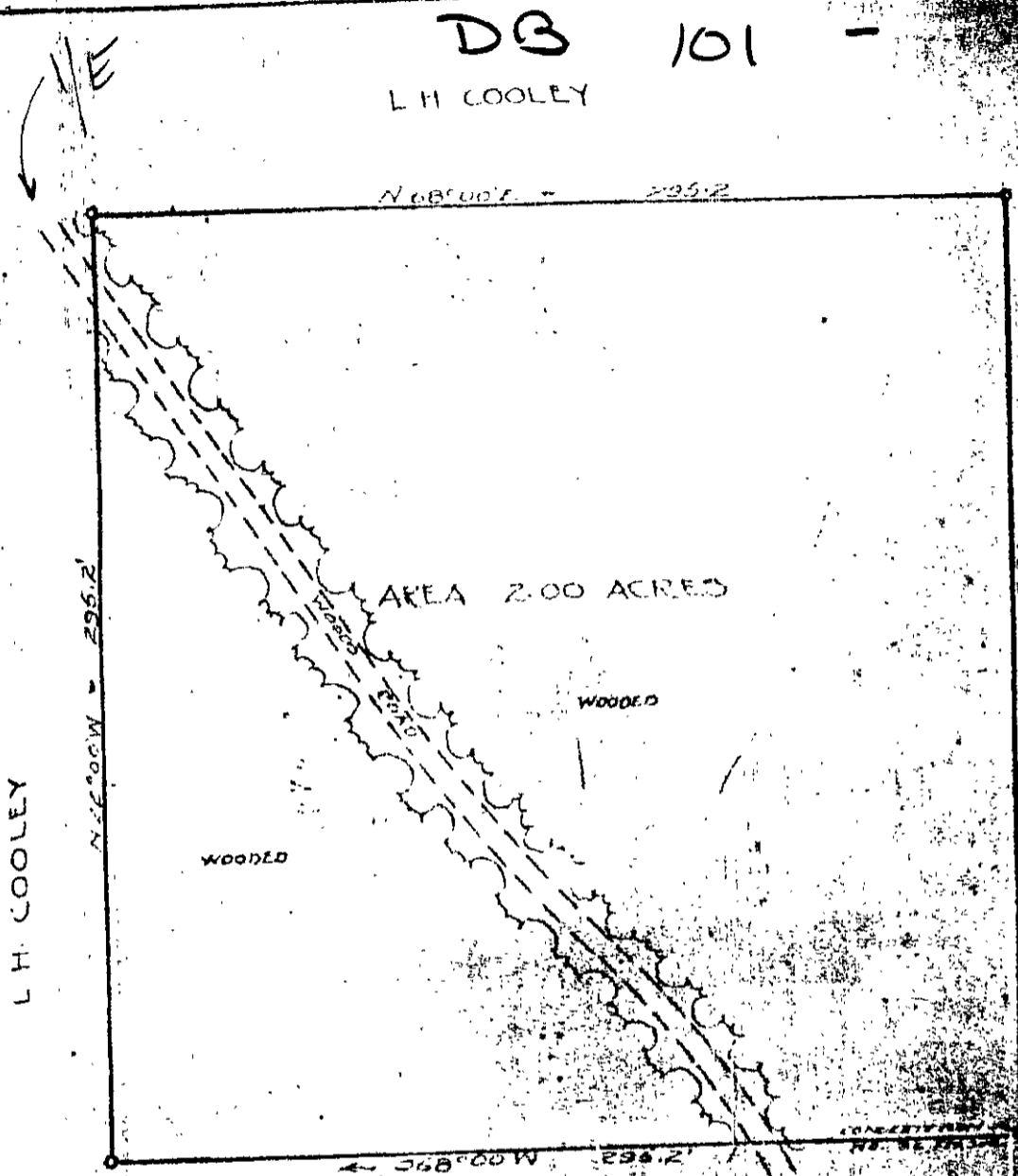


DB 101 - 15

L H COOLEY



L.H. COOLEY

U.S. GOVERNMENT

U.S. GOVERNMENT

PLAT SHOWING SURVEY OF
 PARCEL OF LAND SURVEYED BY
 WILLIAM H. MYERS
 SITUATED IN BRITTON DISTRICT
 YORK COUNTY VIRGINIA
 SURVEYED MAY 1945 SCALE 1" = 50'

5-8

W. D. HARRIS
 ENGINEER & SURVEYOR
 VIRGINIA, 1945