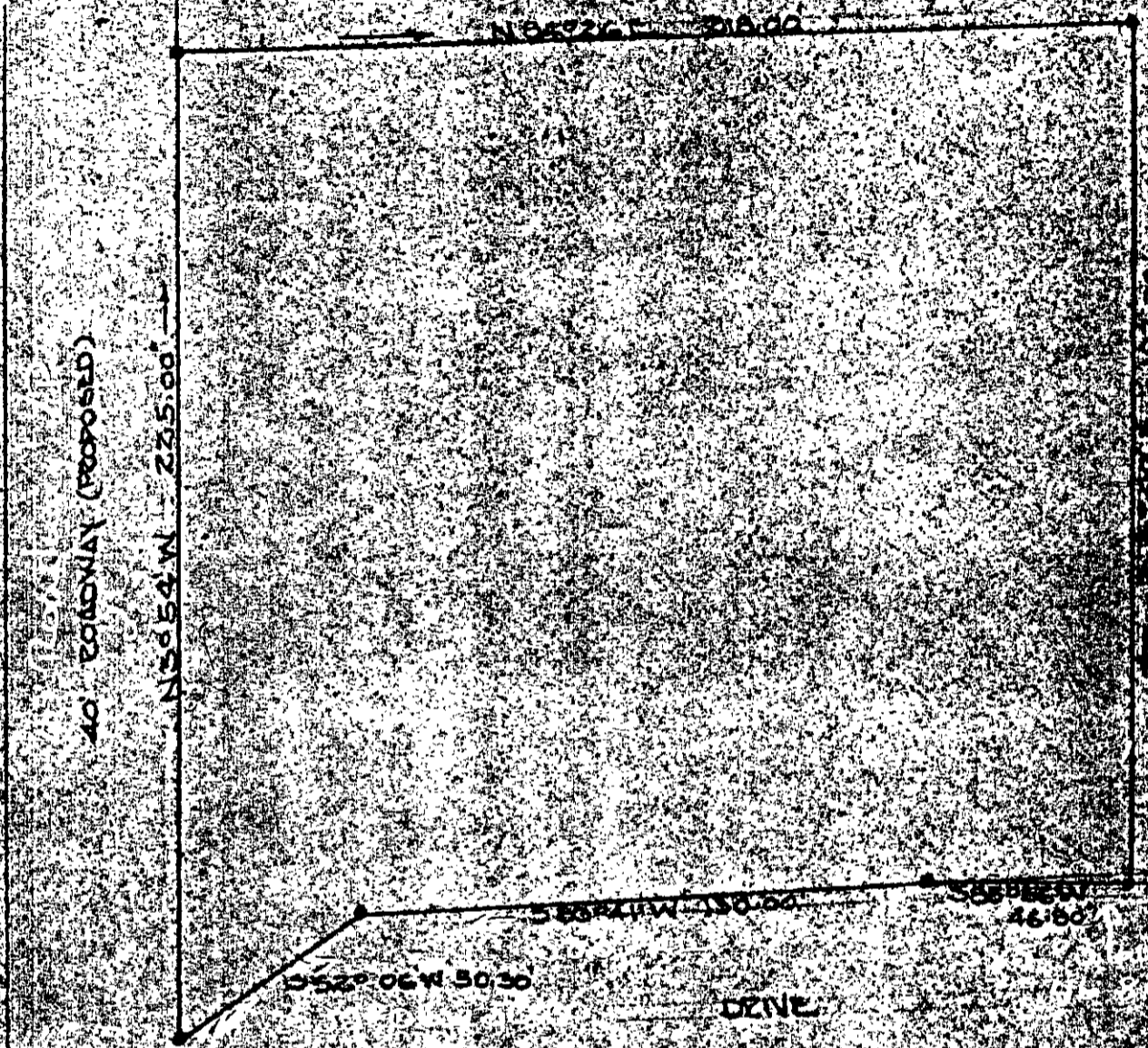


D B 127 499

QUEENS LAKE DEVELOPMENT CO.

499



QUEENS

TRUSS MERIDIAN

QUEENS LAKE DEVELOPMENT CO.

PLAT SHOWING SURVEY OF A  
 PARCEL OF LAND FRONTING ON  
 QUEENS DRIVE, SITUATED IN  
 BRITTON DISTRICT YORK COUNTY  
 VIRGINIA CONTAINING 1.02 ACRES  
 JANUARY 30, 1952 SCALE 1" = 20'  
 IRON PIPES AT ALL ANGLE POINTS

VINCENT S. McHARDY  
 WILLIAMSBURG, VIRGINIA  
 SURVEYOR-GENERAL  
 LAND SURVEYOR 194  
 LICENSED ENGINEER 194  
 CIVIL ENGINEER 1940