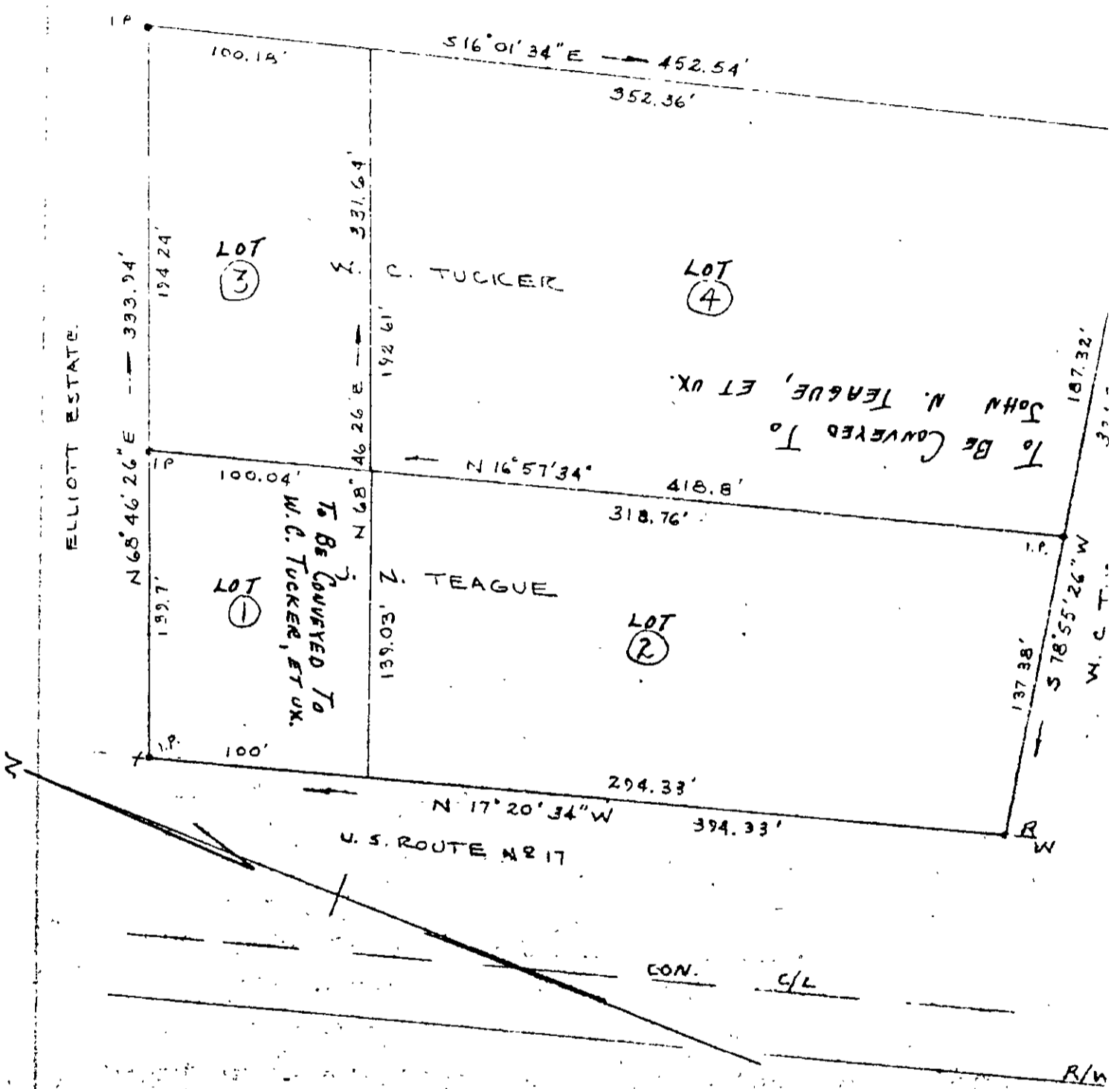


AMES & ASSOCIATES



PLAT SHOWING FOUR PARCELS OF LAND BELONGING TO W. C. TUCKER AND J. N. TEAGUE SITUATED ON ROUTE 17, IN YORK COUNTY, VA. SURVEYED NOV. 1956. SCALE 1"=60'

W. D. THOMAS - C. L. S. 575
Walter D. Thomas

VIRGINIA: County of York to-wit:
 In the Clerk's Office of the Circuit Court for the York, the 4th day of February.
 This deed was presented with the certificate annexed and to record at 10:25 o'clock AM.
 Teste: MELVILLE J. BRYANT, Clerk
 By: *Carl W. Clark* Dep

29-65D