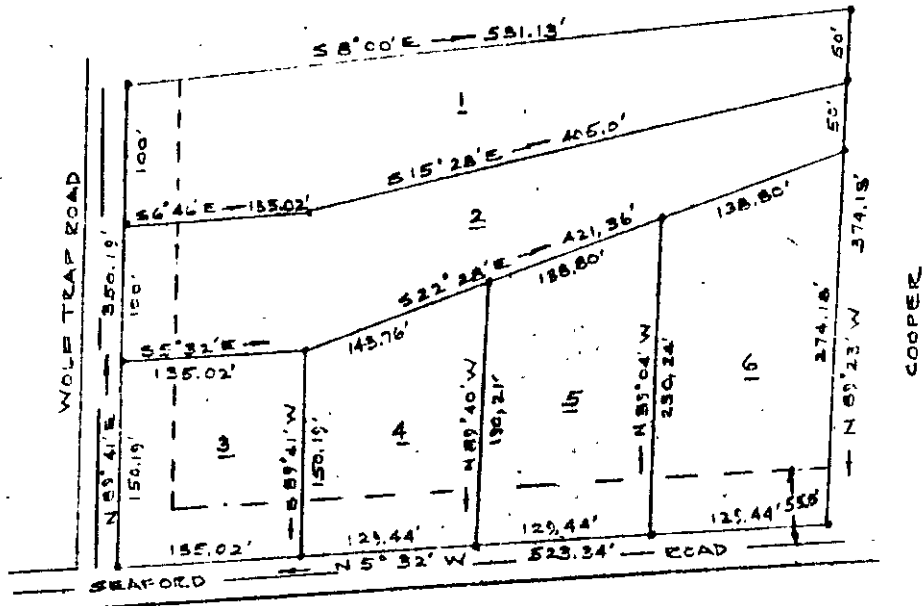


119 159

BOOK 119 PAGE 159

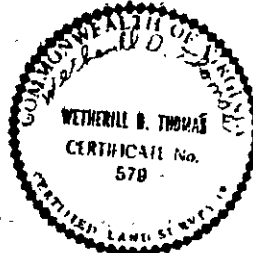
JOHN DAVIS



PLAT SHOWING PROPOSED PARTITION OF THE RALPH HARROD ESTATE
 FOR THE FOLLOWING - VIOLA LINDSEY, WIDOW; LUCY HASKINS; ETHEL
 SHIELDS; THURMAN HARROD, BERNICE TURPONCEC & NATHANIEL
 HARROD; CHARLES HARROD SITUATED YORK COUNTY, VA.
 JULY 1957

SCALE 1"=100'

NOTE IRON PIPES ON ALL CORNERS
 DOTTED LINE IS SET BACK LINE FOR NEW CONSTRUCTION
 ALL PROPOSED DIVISIONS ARE ONE HUNDRED FEET OR
 MORE WIDE AT SET BACK LINE AND CONTAIN 20,000
 SQUARE FEET.



24M (1) LOTS 1 THRU 6