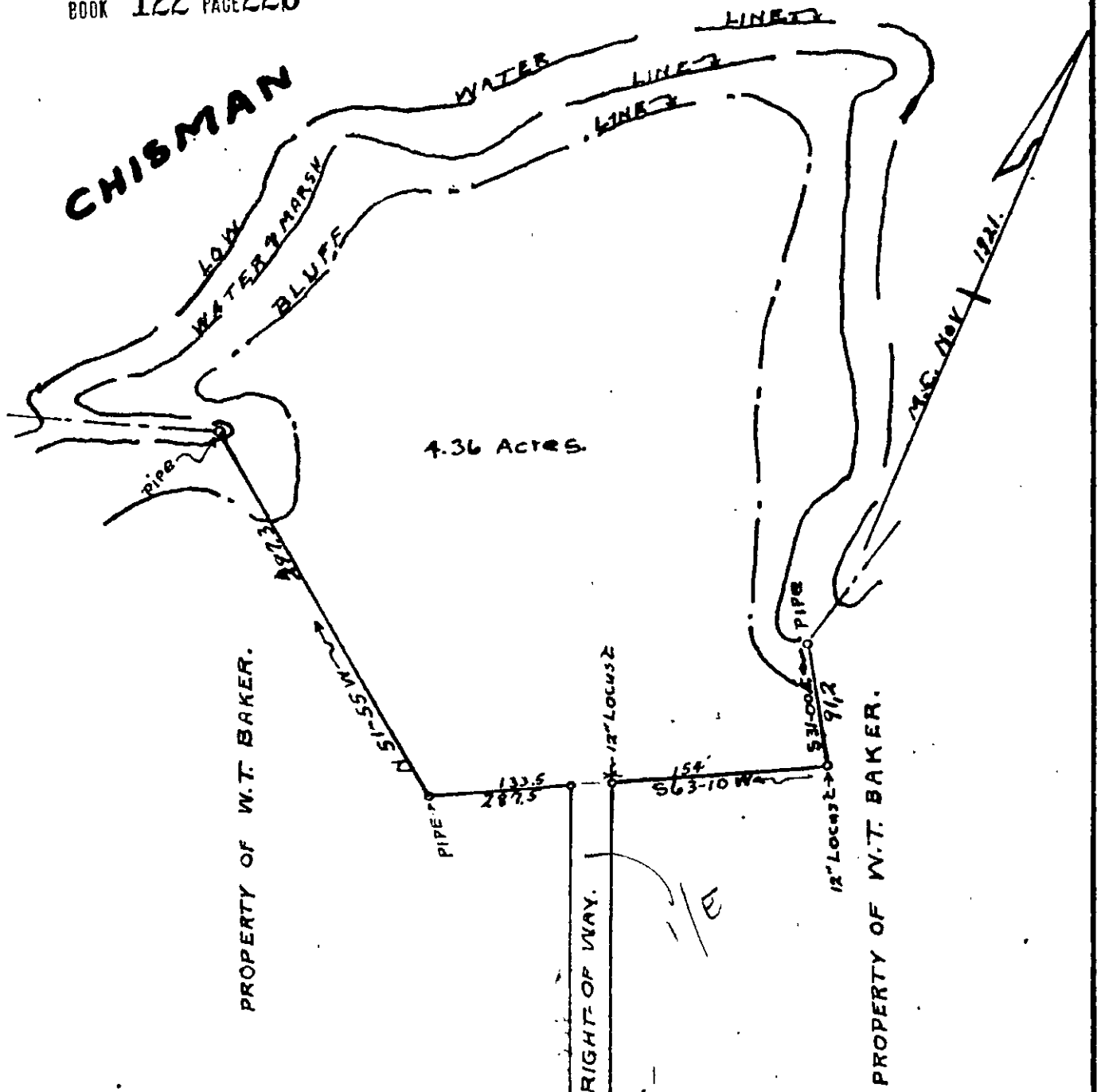


CREEK.

CHISMAN



PLAT SHOWING A TRACT OF
 LAND SITUATE IN THE GRAFTON
 DISTRICT OF YORK COUNTY VA; AS
 CONVEYED TO H. W. MOORLAND, BY
 W. T. BAKER.

Scale 1" = 100'

MAY 18, 1946

J. M. Cochran
 CERTIFIED CIVIL ENGINEER

Note Accesse to Water-Marsh Line.