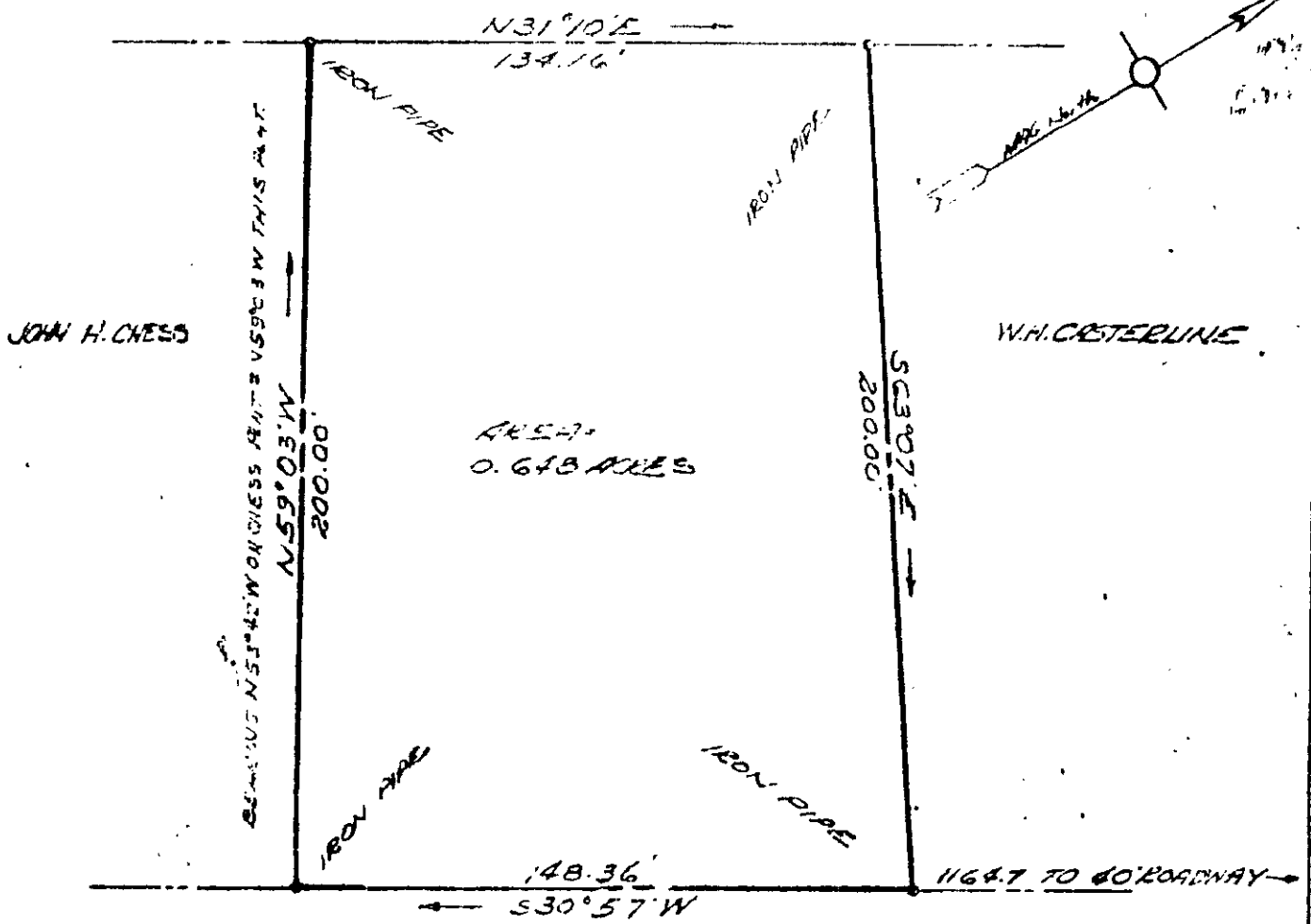


QUEEN'S LAKE DEVELOPMENT CO., INC.

BOOK 134 PAGE 235



QUEENS DRIVE

7A2 (9) 32

PLAT SHOWING SURVEY OF A PARCEL OF LAND TO BE CONVEYED FROM QUEEN'S LAKE DEVELOPMENT CO., INC. TO J. BURWELL PHILLIPS

M. MARCUS ROCK & M. MARCUS CIVIL ENGINEERS - LAND SURVEYORS WILLIAMSBURG, VIRGINIA BY: Kenneth B. ...

BRITTON DISTRICT YORK COUNTY VIRGINIA

JUNE 22 1959 N.S. 3 F 73