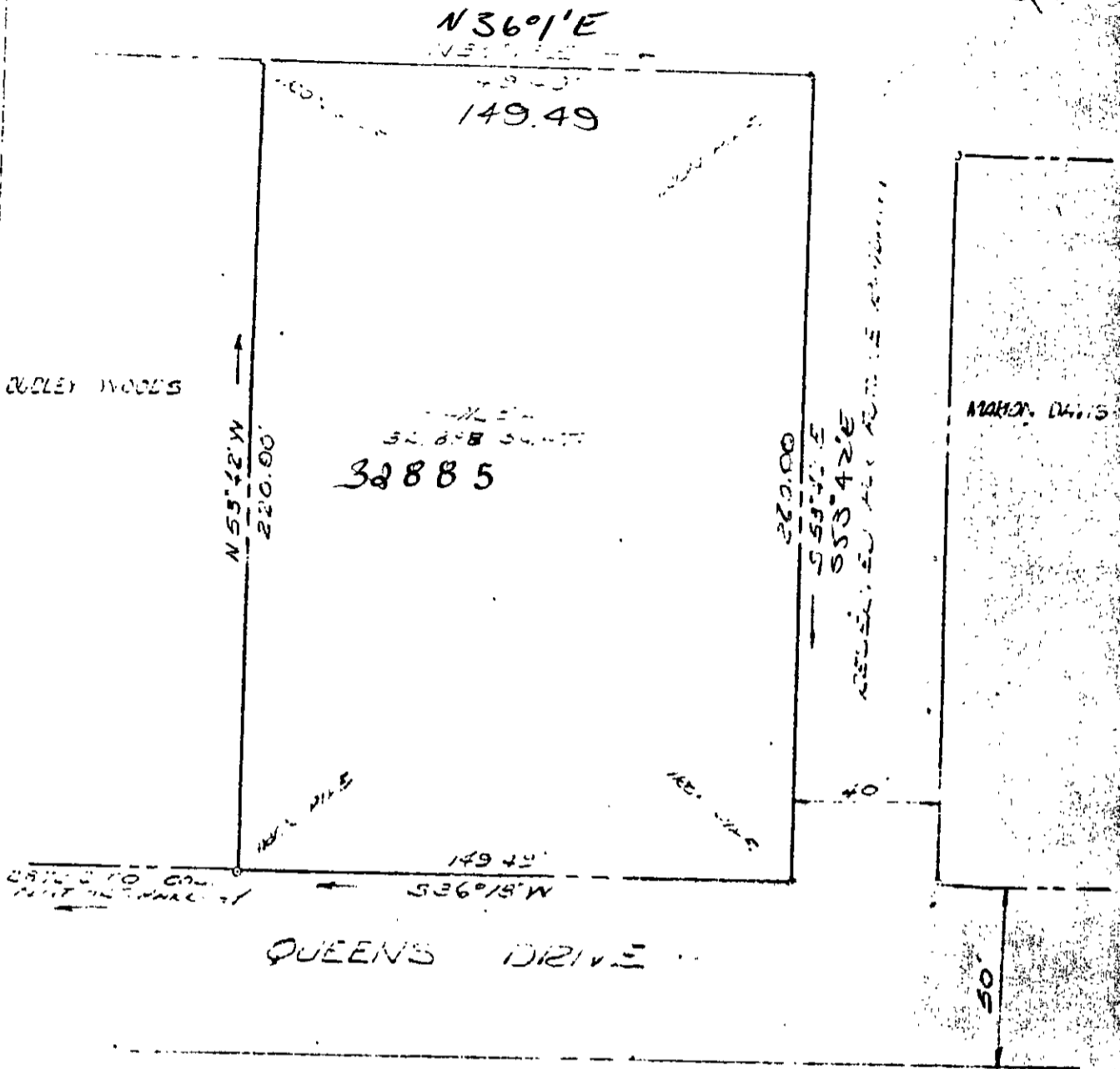


QUEEN'S LAKE DEVELOPMENT CO., INC.



PLAT SHOWING SURVEY
OF A PARCEL OF LAND TO BE
CONVEYED FROM
QUEEN'S LAKE DEVELOPMENT CO., INC. TO

ILDA L. BERNARD
BEUTON DISTRICT
YORK COUNTY
VIRGINIA
SCALE 1" = 40'

AUG. 6, 1959
NBGIP 27

MANUS PROCLEY MANUS
CIVIL ENGINEER & LAND SURVEYORS
WILLIAMSBURG, VIRGINIA
BY *Blair D. Procter*

7A2(9)38