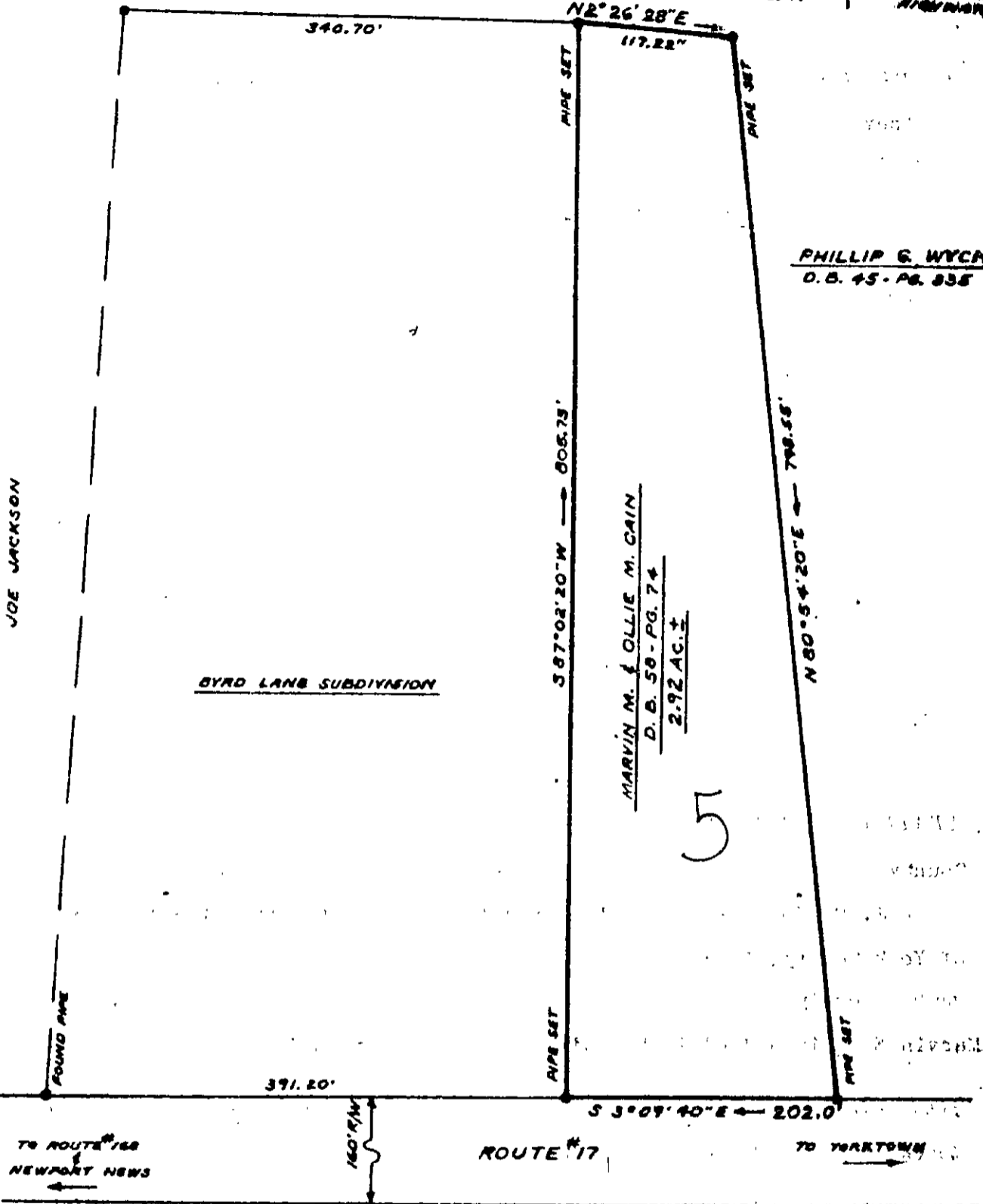
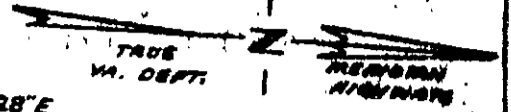


EDWARD GREY



PHILLIP G. WYCHE
D. B. 45 - PG. 838

BYRD LANE SUBDIVISION

MARVIN M. & OLLIE M. CAIN
D. B. 58 - PG. 74
2.92 AC. ±

5



PLAT	
SHOWING PROPERTY OF MARVIN M. & OLLIE M. CAIN	
LOCATED ON ROUTE 17, BETHEL DISTRICT YORK COUNTY, VIRGINIA	
SCALE: 1"=100'	DECEMBER 8, 1980
S. J. GLASS & ASSOCIATES ENGINEER & SURVEYORS -- VIRGINIA PENNSYLVANIA	
FIELD WORK BY: TH	F. B. 105 PG. 18
PLAT BY: ESG	CHECKED BY: S/JG

37-5 ✓