

Julia Hyde

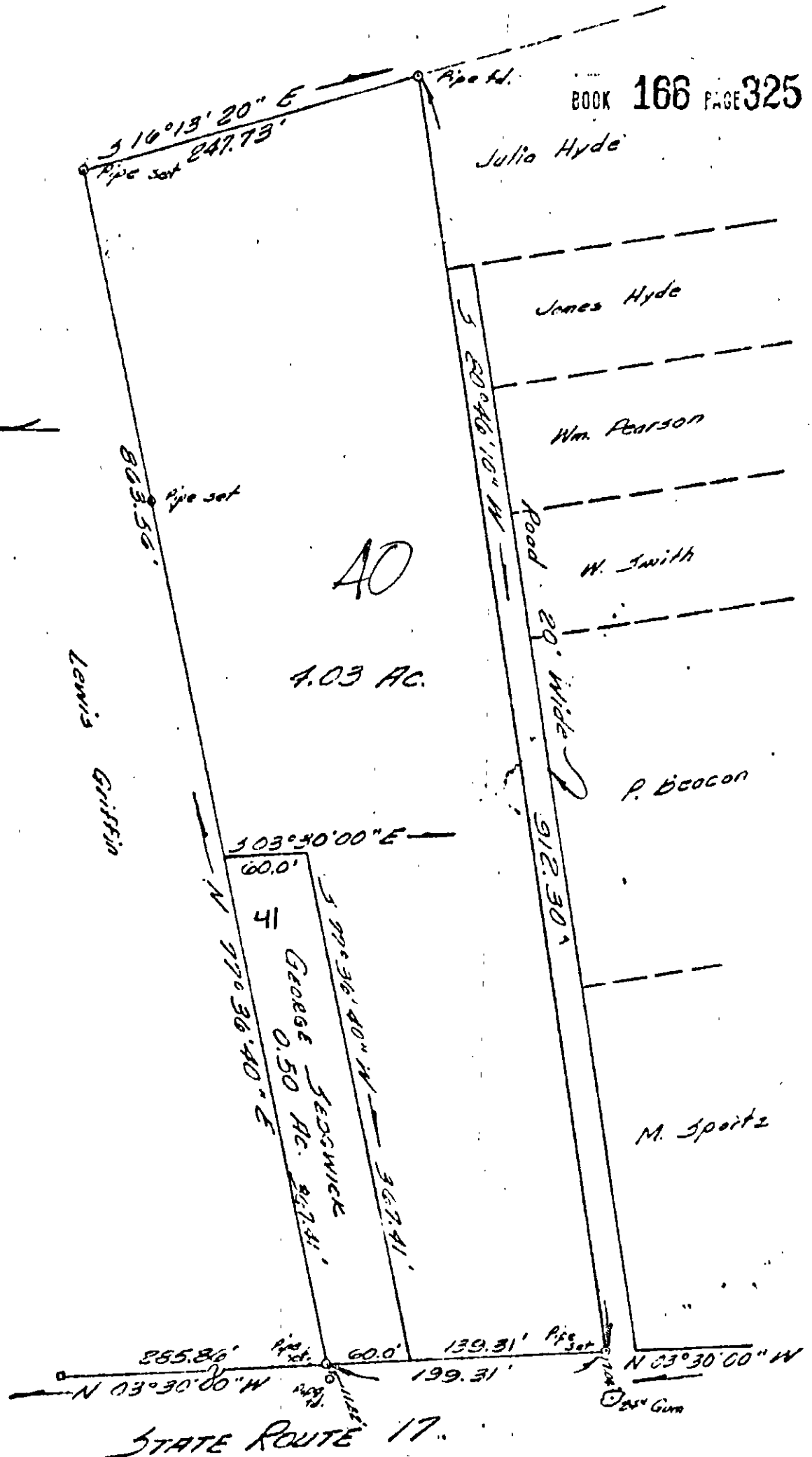
Jones Hyde

Wm. Pearson

W. Smith

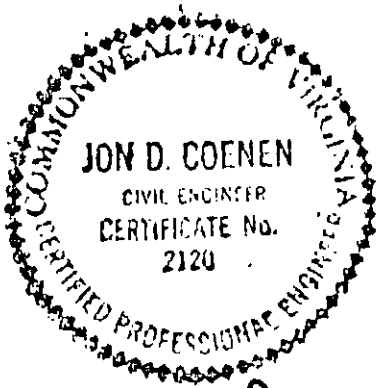
P. Beacon

M. Spartz



STATE ROUTE 17

37-40 ✓



Jon D. Coenen

PLAT OF THE ESTATE OF
 SAMUEL CARTER, DECEASED
 TO BE CONVEYED TO
 PHIL T. RUTLEDGE
 and
 COMPANY, INC.
 YORK COUNTY, VIRGINIA

COENEN & ASSOCIATES, ENGINEERS
 NEWPORT NEWS, VIRGINIA

SCALE 1" = 100'

DATE Oct. 31, '62