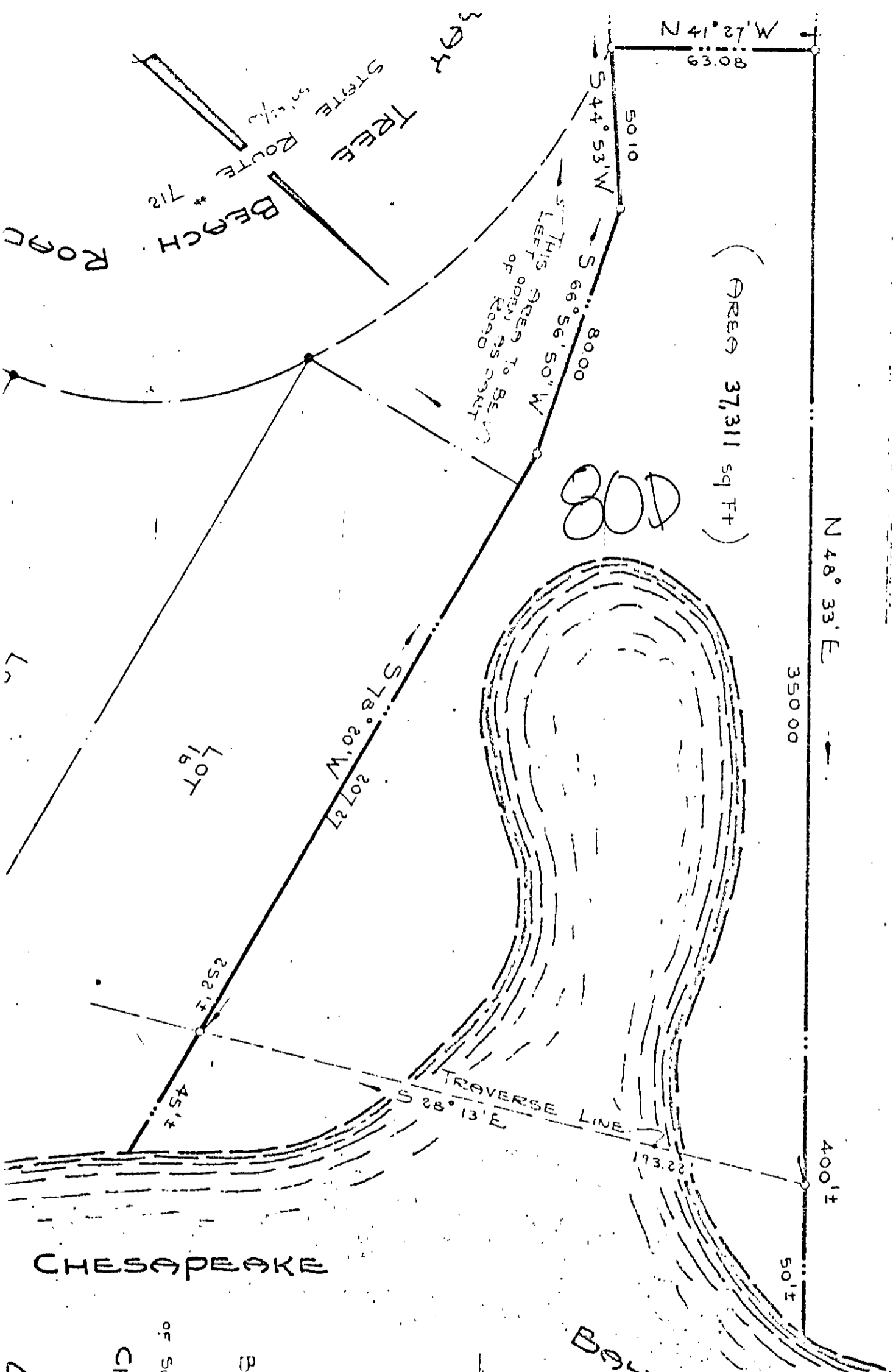


NEW 664 ESTATE MAP
DUCK CLUB PROPERTY



(AREA 37,311 sq Ft)

808

DB 210-30

26-808

CHESAPEAKE

PLAT BOOK 5 - PAGE

Parcel of Land
CONTAINING 37,311 sq F
BEING PART OF PARCEL 6
SHOWN ON PLAT ENTITLED
PLAT
of
SUBDIVISION OF PART OF PAPER

CHARLES S. WITHROX
YORK COUNTY, VA.

SCALE 1" = 40' DATE 24 JAN 2

Carl R. ...