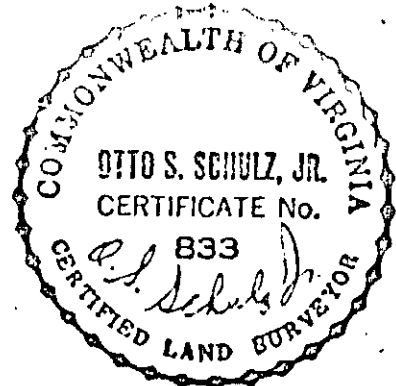


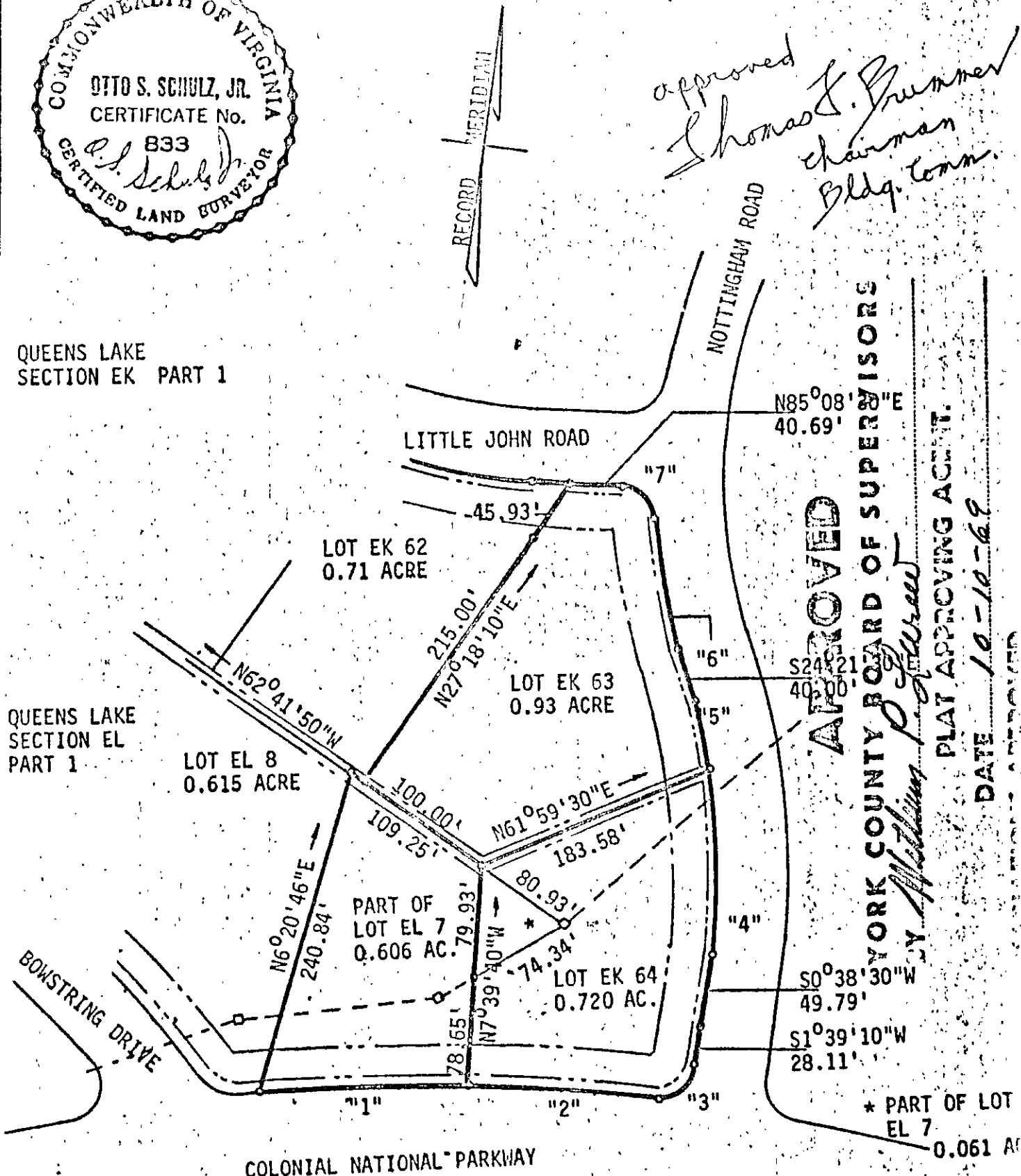
DB 222-249

approved  
*Thomas F. Brunner*  
 chairman  
 Bldg. Comm.



QUEENS LAKE SECTION EK PART 1

QUEENS LAKE SECTION EL PART 1



APPROVED  
 YORK COUNTY BOARD OF SUPERVISORS  
*J. William P. Stewart*  
 PLAT APPROVING AGENT.  
 DATE 10-10-68

CURVE	DELTA	RADIUS	TANGENT	LENGTH	LOT
1	6°00'00"	1396.30	73.18	146.22	EL 7
2	5°32'20"	1396.30	67.54	134.98	EK 64
3	87°59'05"	25.00	24.14	38.39	EK 64
4	18°16'30"	426.07	68.53	135.90	EK 64
5	6°43'30"	426.07	25.03	50.00	EK 63
6	13°03'10"	420.35'	48.09	95.76	EK 63
7	83°33'10"	25.00	23.13	38.64	EK 63

L.V. WOODSON & ASSOCIATES, ENGINEERS & SURVEYORS, P.O. BOX 353 WILLIAMSBURG, VIRGINIA 23186

PLAT SHOWING THE SUBDIVISION OF LOT EL-7, PART 1, SECTION EL, QUEENS LAKE SUBDIVISION, SECTION DISTRICT, YORK COUNTY, VIRGINIA

SCALE 1"=10' REF: PLAT 744 (1) AREA

J.O. 232

744 (1) 7A