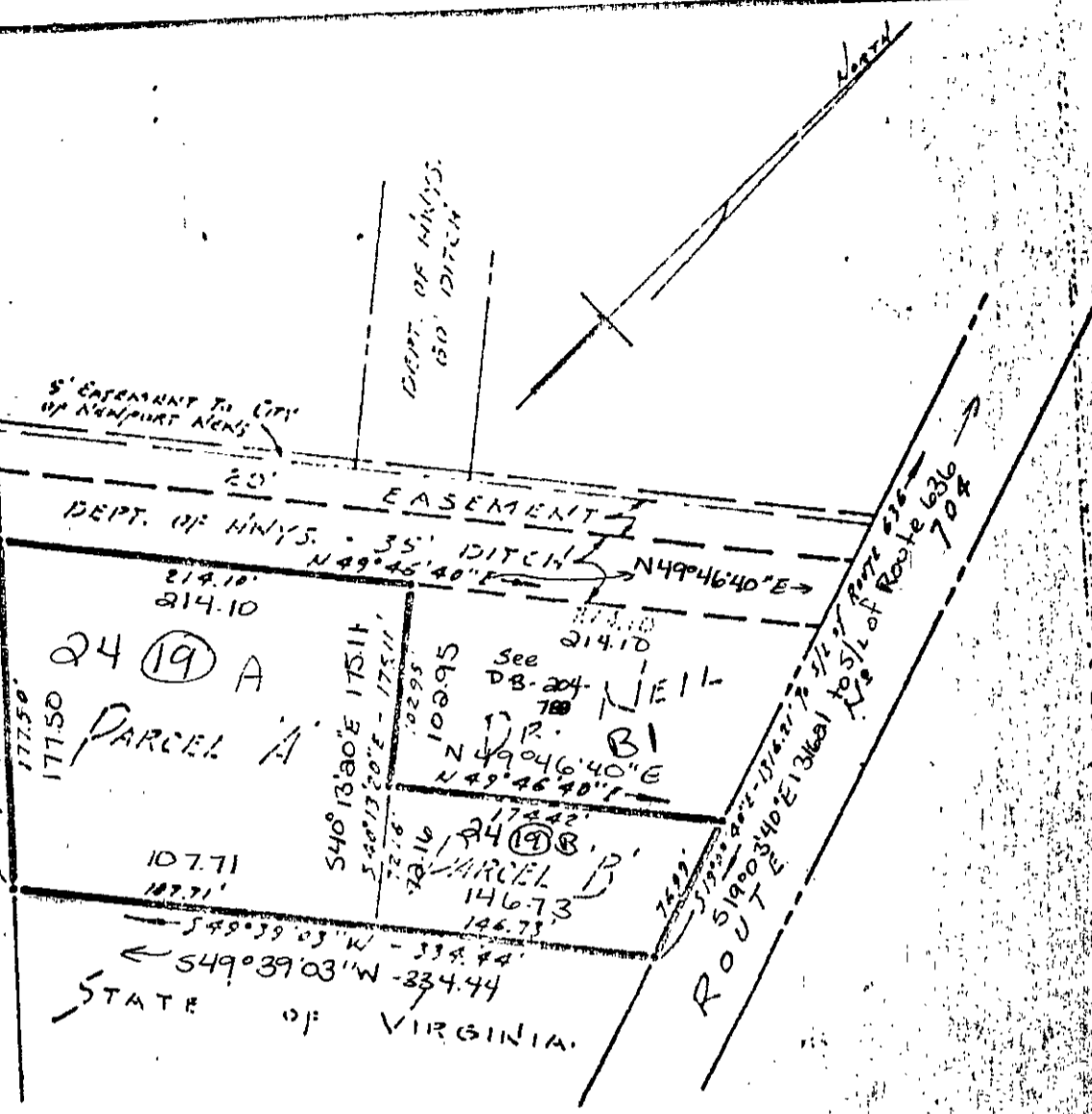


ROUTE No 17

N 48° 46' 20" W 1348.81 to 5/4 of Route 636
N 48° 46' 20" W 1748.81 to 5/4 of Route 636



Parcel of Land LYING BETWEEN ROUTES 17 AND 704
 SOUTH OF ROUTE 636.
 Grafton District VIRGINIA
 YORK Co.

Parcel A	0.809	Ac
Parcel B	0.265	Ac
Total	1.074	Ac
Parcel A	0.809	Ac
Parcel B	0.265	Ac
Total	1.074	Ac

Scale 1" = 100'
 April 20, 1970

W & ASSOCIATES
 ENGINEERS & SURVEYORS
 RICHMOND, VA.

24 (19) A & B

SCALE: 1" = 100'