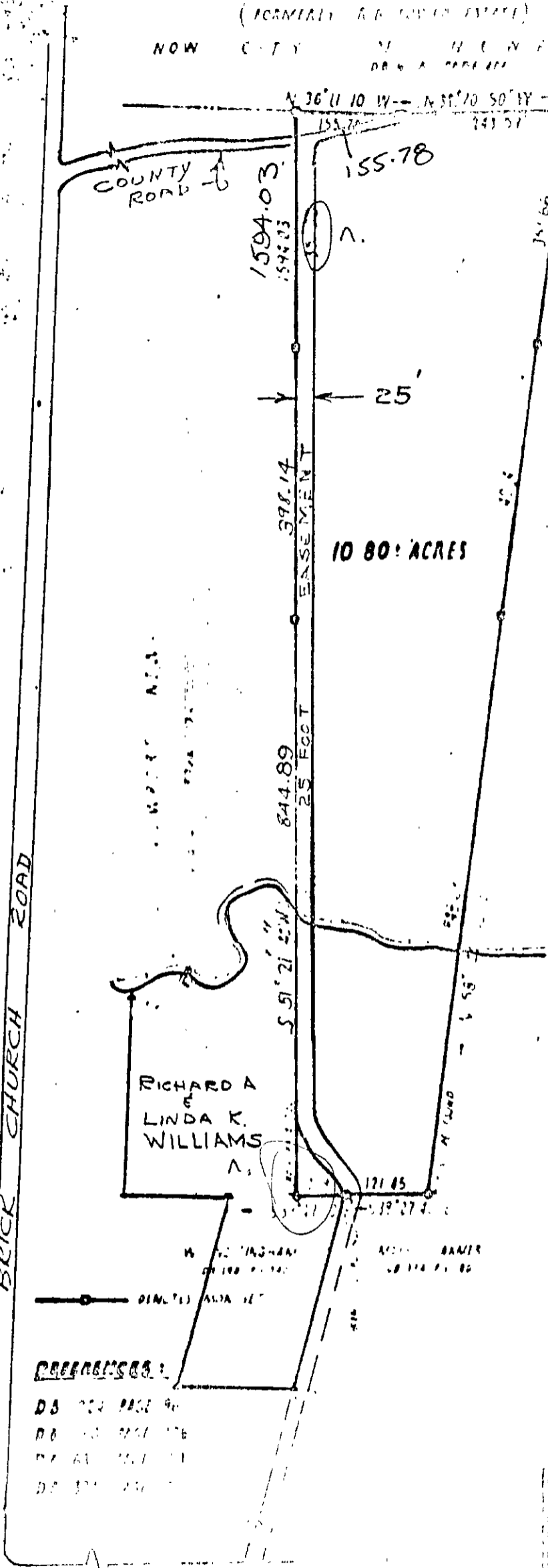


(FORMERLY RICHMOND ESTATE)

DB 249-23

NOW CITY OF RICHMOND VIRGINIA



10.80 ACRES

25'

25 FOOT EASEMENT

RICHARD A. & LINDA K. WILLIAMS

DEED OF ESMT @ 228 specifies AS PG 529 I/E

SKETCH SHOWING 25 FT. EASEMENT LOCATION

REFERENCES:

- DB 204 PAGE 90
- DB 204 PAGE 126
- DB 204 PAGE 131
- DB 204 PAGE 132

W. M. CILL  
 ENGINEER  
 VIRGINIA  
 ENGINEER

ESMT FOR

24-138B + 138A

Handwritten notes and signatures at the bottom left.