

Now or formerly  
C.C. COOKE

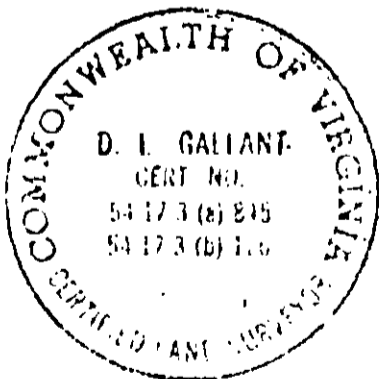
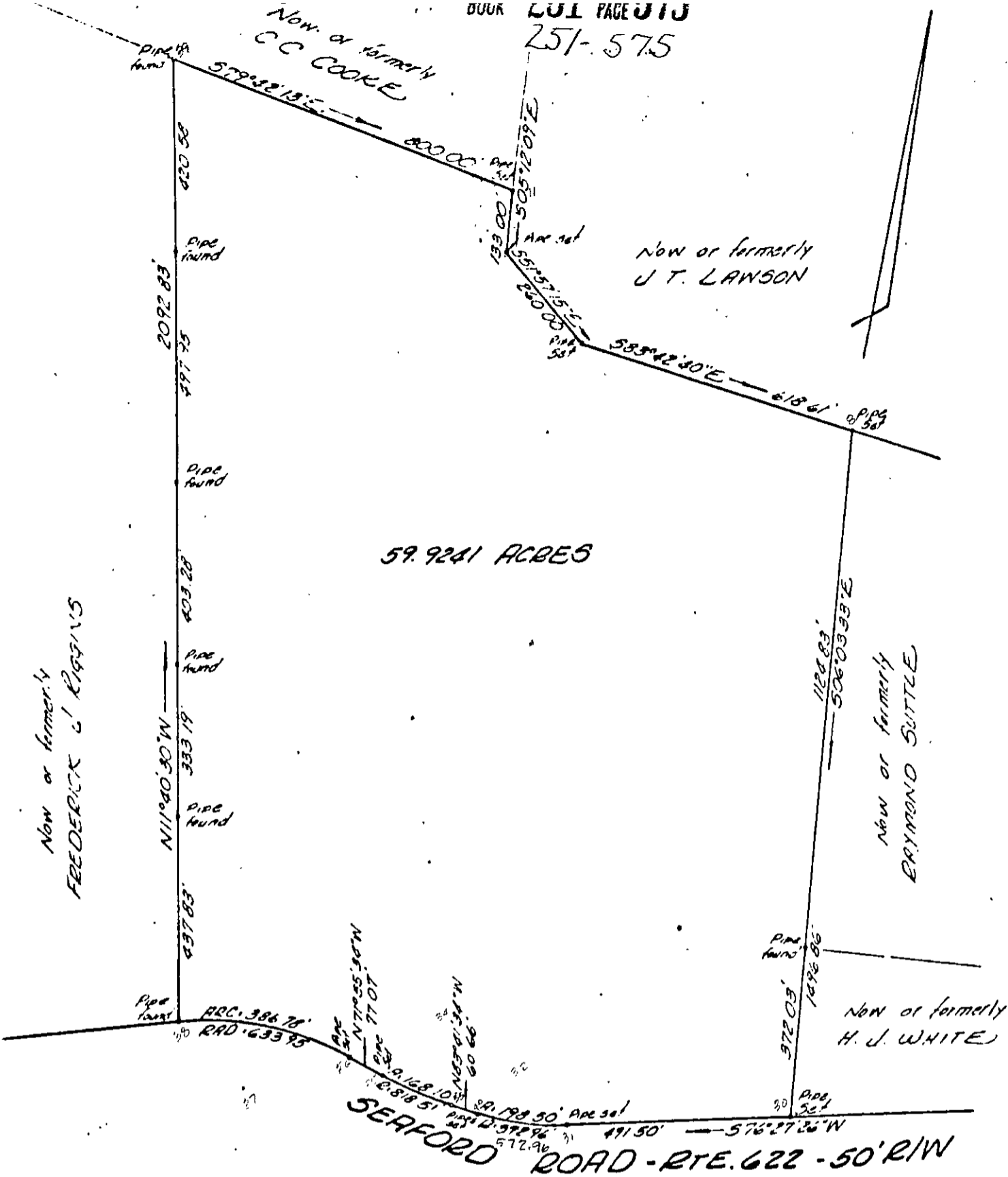
Now or formerly  
J.T. LAWSON

59.9241 ACRES

Now or formerly  
FREDERICK C. RIGGINS

Now or formerly  
RAYMOND SUTTLE

Now or formerly  
H.J. WHITE



I certify that this perimeter survey is correct to the best of my knowledge and belief, subject to easements, servitudes and covenants of record.

*D. I. Gallant*

25-321

PLAT OF THE PROPERTY OF  
BERNARD L. LIPMAN

GRAFTON MAGISTERIAL DISTRICT  
YORK COUNTY, VIRGINIA

COENEN & ASSOCIATES  
ENGINEERS — PLANNERS — SURVEYORS  
696 J. CLYDE MORRIS BLVD.—NEWPORT NEWS, VIRGINIA

SCALE: 1" = 300'

DATE: December 15, 1972