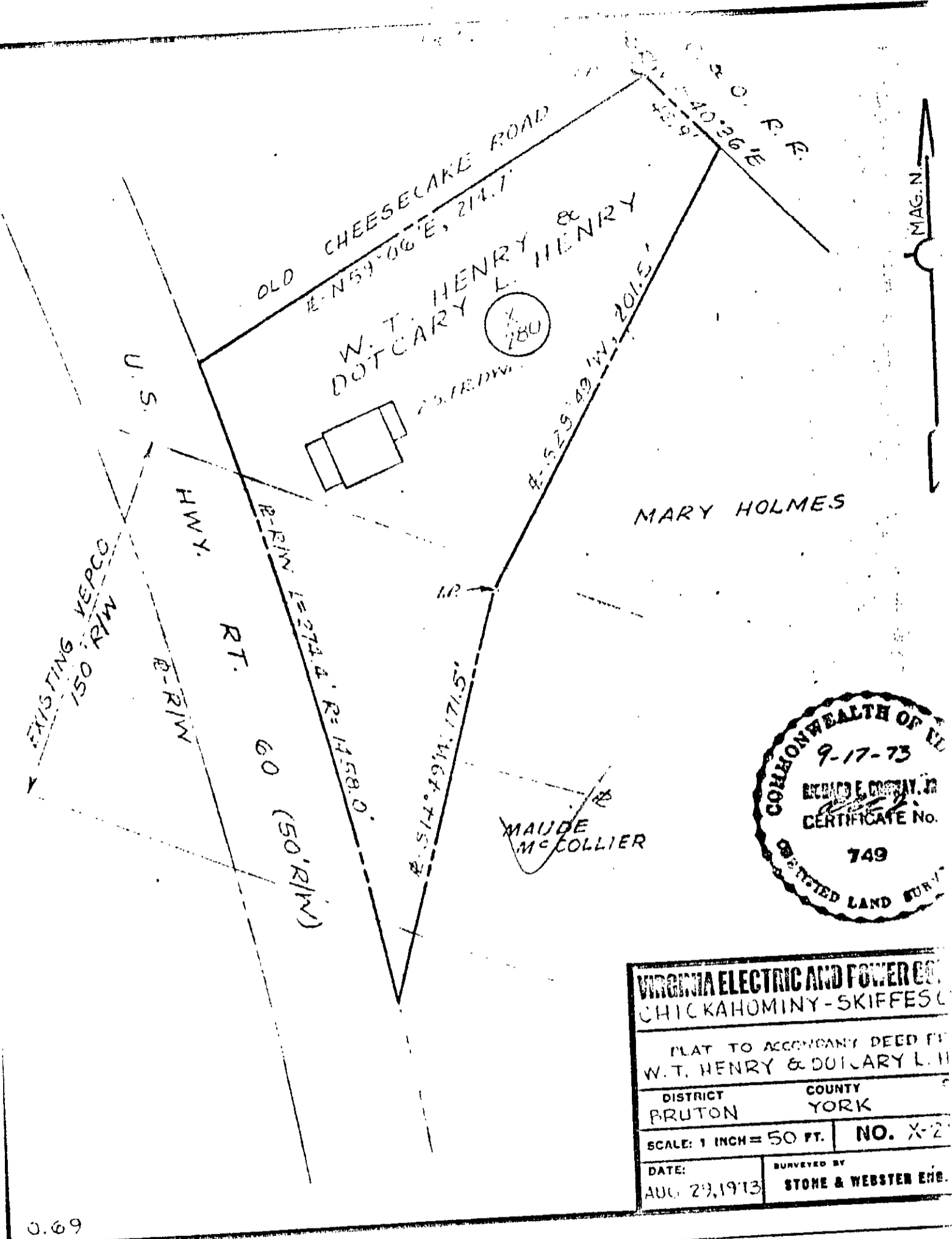


D.B-260-766

BOOK 73891 PAGE 1789



<b>VIRGINIA ELECTRIC AND POWER CO.</b>	
CHICKAHOMINY-SKIFFES	
PLAT TO ACCOMPANY DEED FOR W. T. HENRY & DOTCARY L. H.	
DISTRICT BRUTON	COUNTY YORK
SCALE: 1 INCH = 50 FT.	NO. X-2
DATE: AUG. 29, 1973	SURVEYED BY STONE & WEBSTER ENG.

0.69

Tax Map 15-26