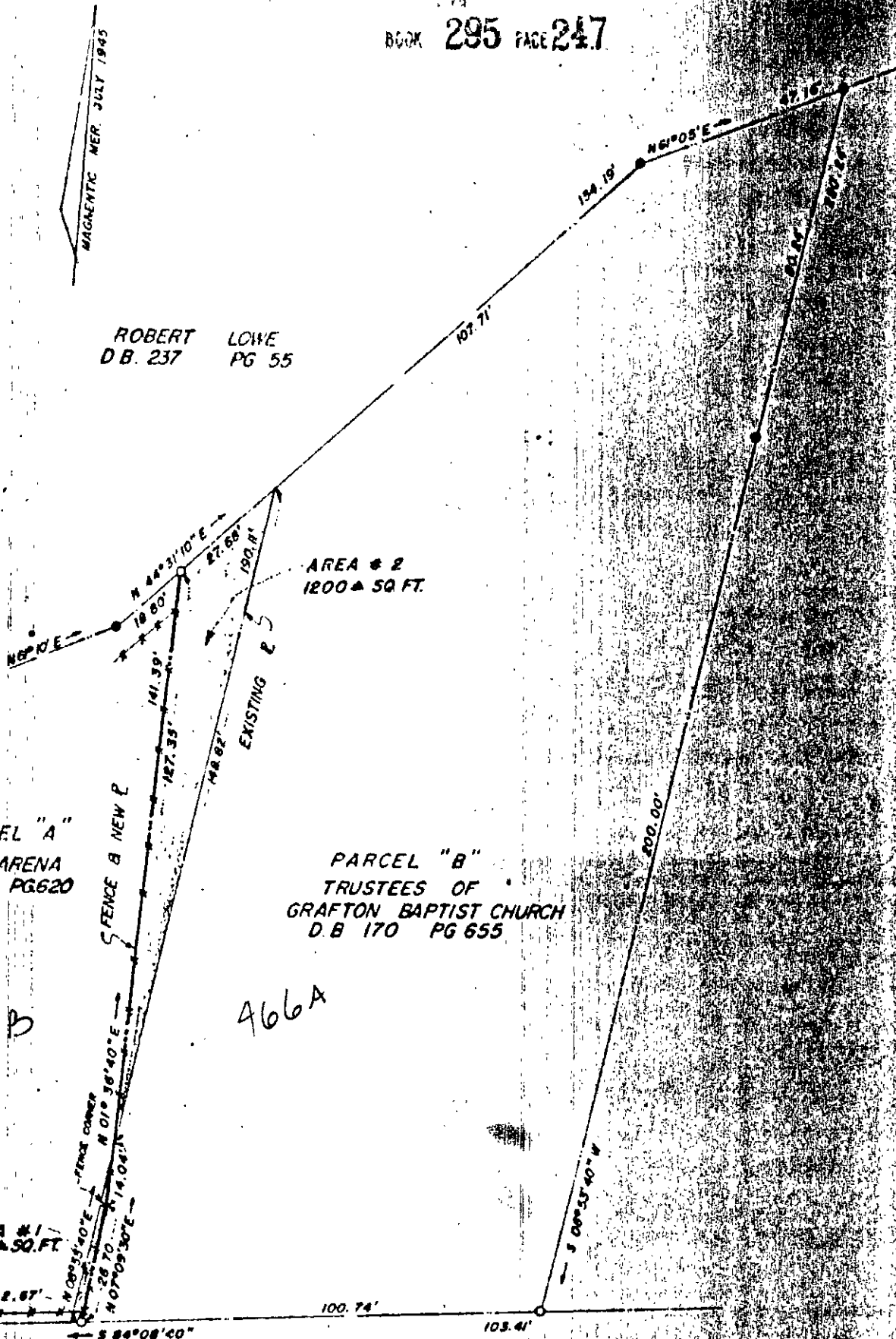


ROBERT LOWE
D.B. 237 PG 55



PARCEL "A"
F. B. ARENA
D.B. 170 PG 620

PARCEL "B"
TRUSTEES OF
GRAFTON BAPTIST CHURCH
D.B 170 PG 655

AREA #1
714.50 FT.

AREA #2
1200 SQ. FT.

466B

466A

STATE ROUTE # 655

25-466A
466B

PLAT OF PROPERTY TO BE EXCHANGED
 BETWEEN
 F. B. ARENA
 &
 TRUSTEES OF GRAFTON BAPTIST CHURCH
 LEEFARM DISTRICT
 YORK COUNTY, VIRGINIA

Murray & Dischinger — Engineers
 Newport News & Hampton, Virginia

Revisions