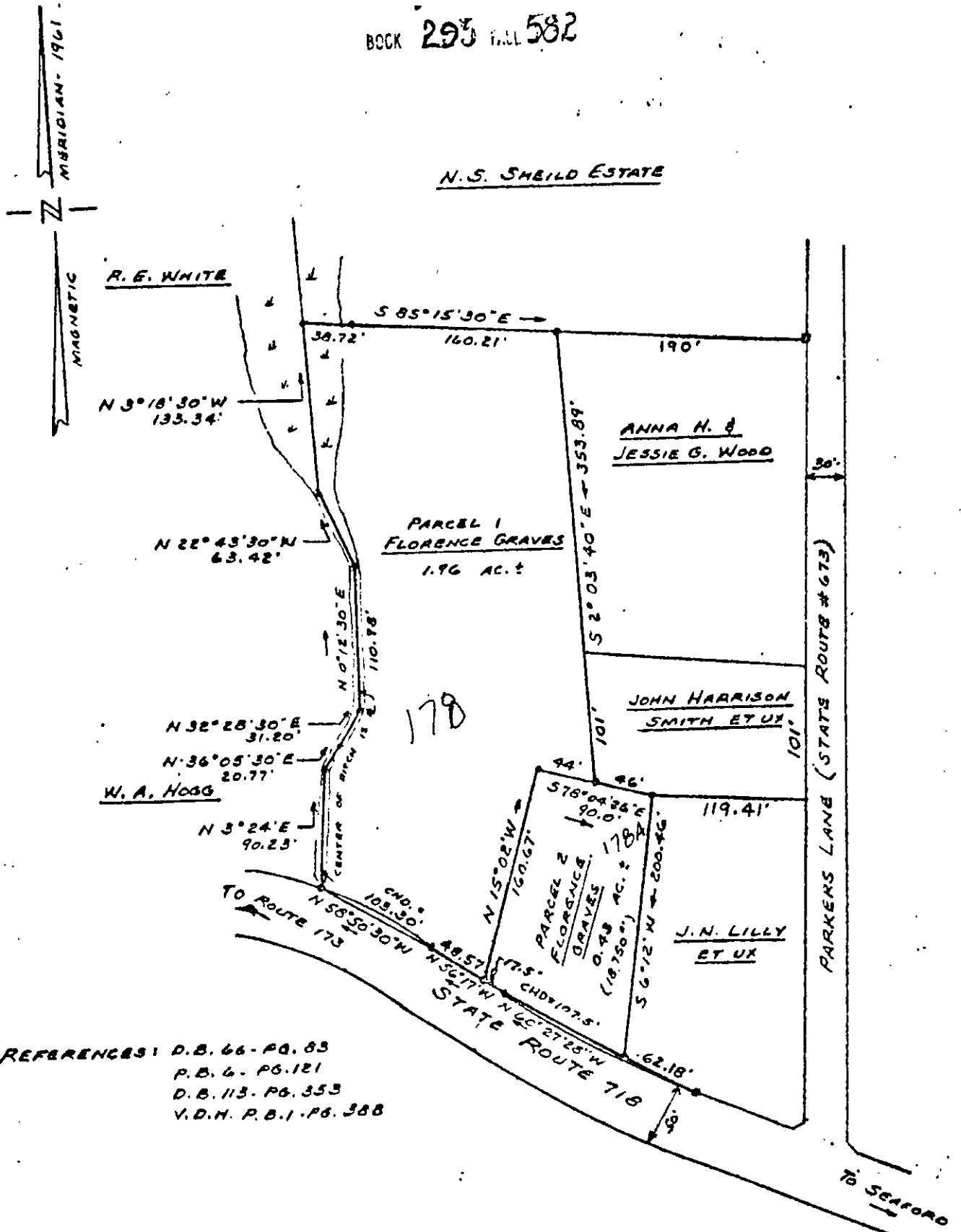


BOOK 295 PAGE 582

N.S. SHEILD ESTATE



REFERENCES: D.B. 66 - PG. 83
 P.B. 6 - PG. 121
 D.B. 113 - PG. 353
 V.D.H. P.B. 1 - PG. 388

Approved for recording in accordance with Section 2-34 (2) of Subdivision Ordinance.

T.G. Fair
 12-27-76



PLAT SHOWING DIVISION OF PROPERTY OF FLORENCE GRAVES	
BEING LOCATED ON STATE ROUTE #718 GRAFTON DISTRICT YORK COUNTY, VIRGINIA	
SCALE: 1" = 100'	DECEMBER 21, 1976
S. J. GLASS & ASSOCIATES ENGINEERING SERVICES - HAMPTON, VIRGINIA	
P. F. NO. A-G-298	FIELD WORK BY: S.J.G.

76-94

25-178 + 178A