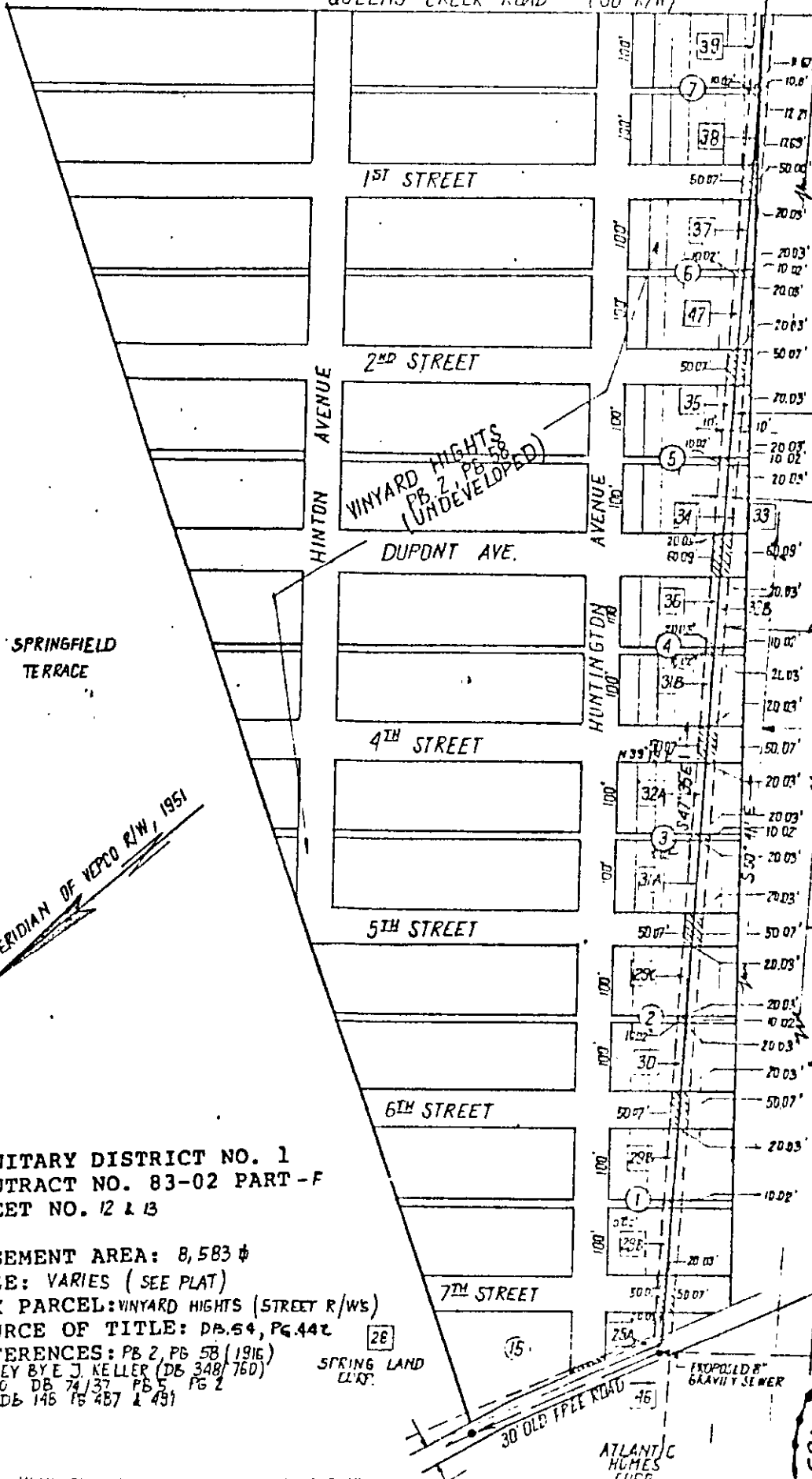


QUEENS CREEK ROAD (30' R/W)



SPRINGFIELD TERRACE

MERIDIAN OF VEPCO R/W, 1951

VINYARD HEIGHTS (UNDEVELOPED)
PB 2, PG 58

PROPOSED 8" FORCE MAIN

20' EASEMENT (TYPICAL)

200' VEPCO EASEMENT (R/W)

115 KV POWER LINE

THOMAS R. HALL ET AL.

230 KV POWER LINE

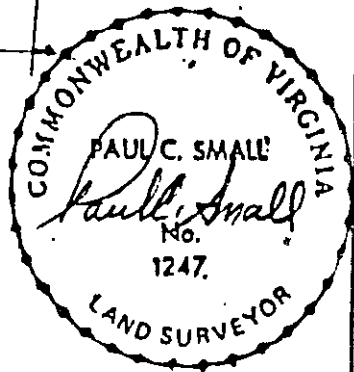
SANITARY DISTRICT NO. 1
CONTRACT NO. 83-02 PART-F
SHEET NO. 12 & 13

EASEMENT AREA: 8,583 ±
SIZE: VARIES (SEE PLAT)
TAX PARCEL: VINYARD HEIGHTS (STREET R/Ws)
SOURCE OF TITLE: DB 64, PG 442
REFERENCES: PB 2, PG 58 (1916)
SURVEY BY E. J. KELLER (DB 348/760)
VEPCO, DB 74/37, PG 5, PG 2
NN DB 146 (PG 487 & 491)

SPRING LAND L.L.P.

PROPOSED 8" GRAVITY SEWER

ATLANTIC HUMES CURB



NUMBERS IN BOXES REFER TO EASEMENT PLAT NUMBERS FOR ADJACENT PROPERTIES.

THIS PLAT WAS PREPARED FROM AVAILABLE RECORDED INFORMATION AND CONTROLLED SURVEYS. PROPERTY LINES, UNLESS SPECIFICALLY CALLED OUT ON THIS PLAT, WERE NOT VERIFIED BY ACTUAL FIELD SURVEY.

A.E.S., a professional corporation, architects, engineers, surveyors, etc., Williamsburg, Virginia

FOR CONVEYANCE FROM: SHIELDSON & BAYLES

FOR CONVEYANCE TO: COUNTY OF YORK VIRGINIA

YOUR COUNTY

ESMT FOR STREETS VIRGINIA

Scale: 1" = 200'

PLAT NUMBER: 83-02 PART-F

DATE: 1983

Job No.: 5207 49