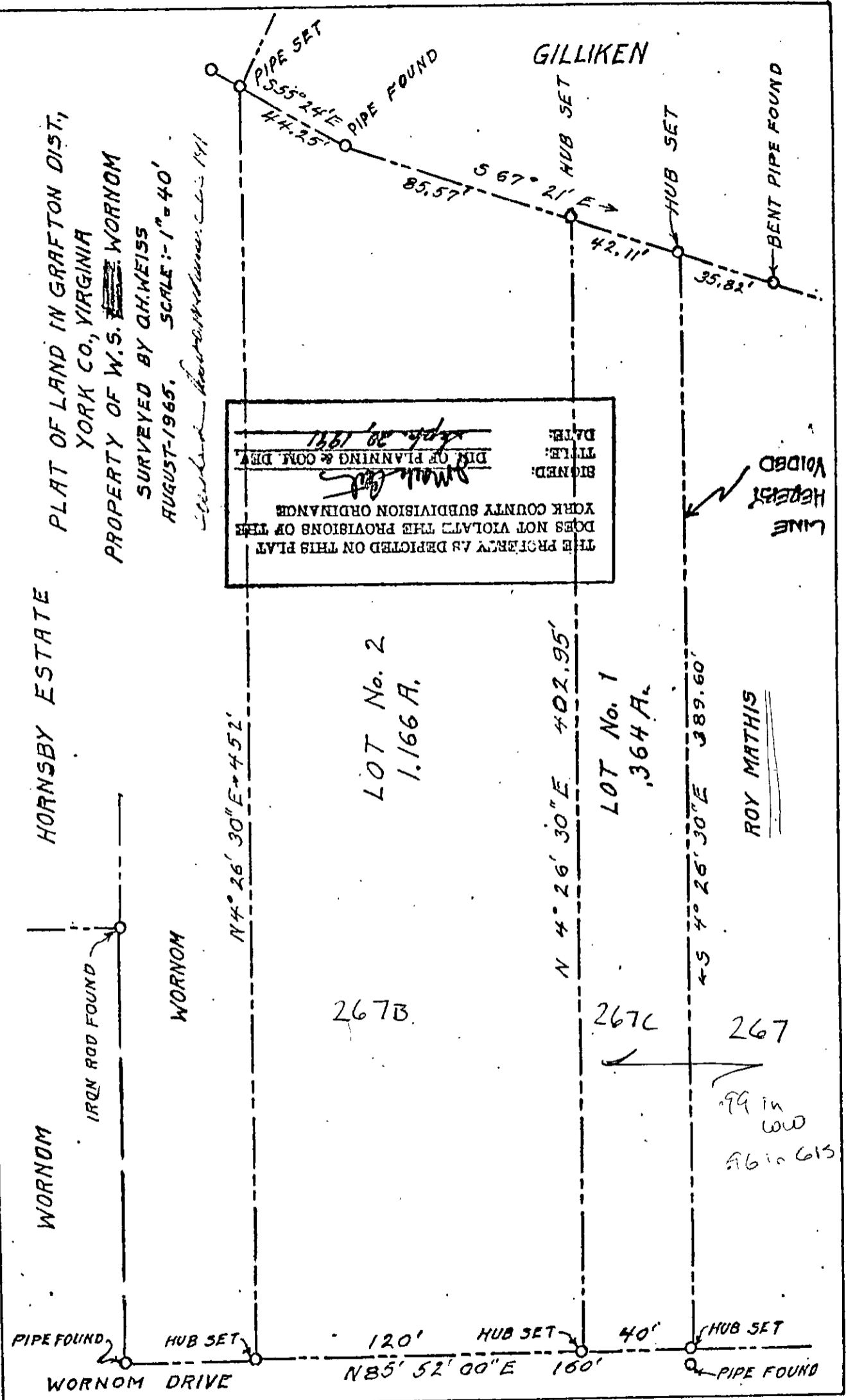


PLAT OF LAND IN GRAFTON DIST,  
 YORK CO., VIRGINIA  
 PROPERTY OF W.S. WORNOM  
 SURVEYED BY CH. WEISS  
 AUGUST-1965. SCALE: 1" = 40'

*W.S. Wornom*

THE PROPERTY AS DEPICTED ON THIS PLAT  
 DOES NOT VIOLATE THE PROVISIONS OF THE  
 YORK COUNTY SUBDIVISION ORDINANCE  
 SIGNED: *Small Print*  
 TITLE: *Small Print*  
 DATE: *Sept. 29, 1991*



BOOK 627 PAGE 525

*Wornom to Wornom*

308

328

25-267