

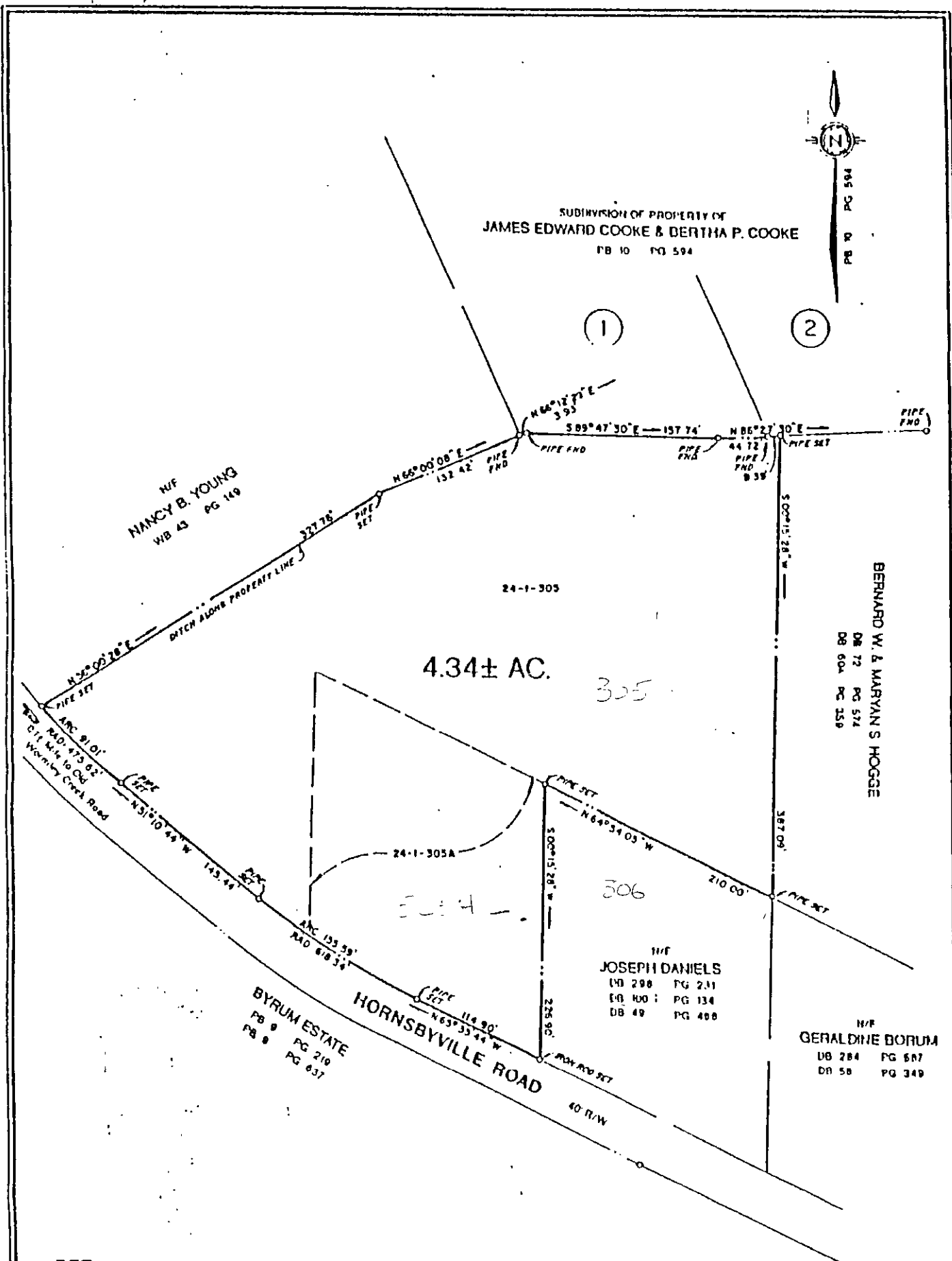
24-305

Delete 24-305A

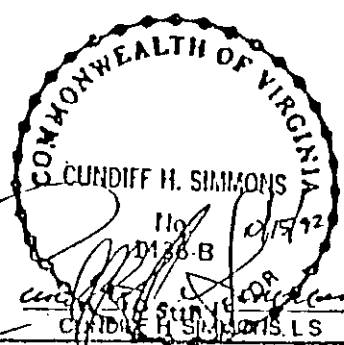
0670-17-R29

BK0691PG0340

AF 54061



- REF:
- DB 31 PG 496
 - DB 32 PG 255
 - DB 40 PG 55
 - DB 40 PG 135
 - DB 44 PG 330
 - DB 51 PG 493
 - DB 57 PG 271
 - DB 72 PG 587
 - WB 29 PG 157
 - DB 502 PG 204



TAX MAP PARCELS 24-1-305 & 305A

PLAT OF PROPERTY TO BE CONVEYED TO
CARL J. & LYNN A. WILLIFORD

NELSON DISTRICT
YORK COUNTY, VIRGINIA

HUGH C. DISCHINGER & ASSOCIATES, P.C.
ENGINEERS - SURVEYORS
York County, Virginia

Drawn	GJP	Scale	1" = 100'
Checked	CHS	Date	OCT 15 1992
Fb248Pg 2-13		Job No	92-9-2015

Revisions

24-305
305A