

BK0896PG0336

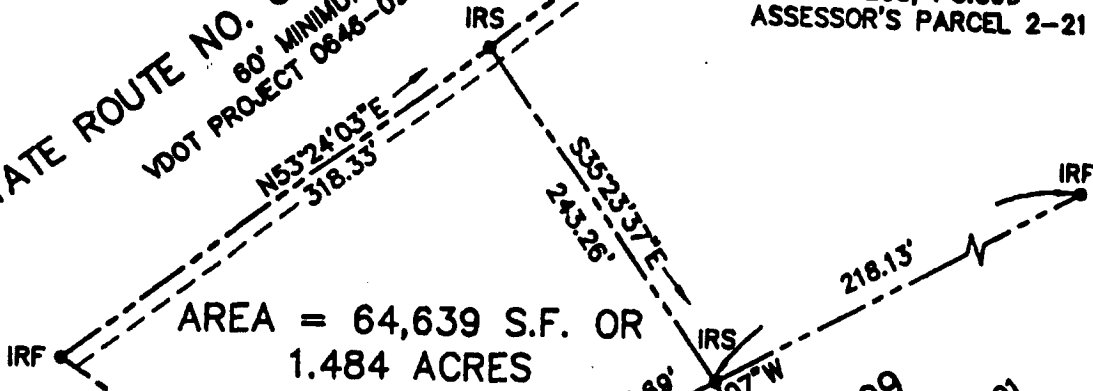
REFERENCES: D.B.121, PG.416  
D.B.228, PG.226  
D.B.610, PG.120  
D.B.616, PG.130-136  
ST.HWY.P.B.6, PG.178-179  
P.B.9, PG.461



STATE ROUTE NO. 646 - LIGHTFOOT ROAD  
60' MINIMUM R/W  
VDOT PROJECT 0846-099-154,M-501

10' C&P TELE. CO. UTILITY  
EASEMENT PER VDOT PROJECT  
#0646-099-154,M-501  
D.B.620, PG.638

N/F  
LUCIE L. DOBSON  
D.B.208, PG.399  
ASSESSOR'S PARCEL 2-21

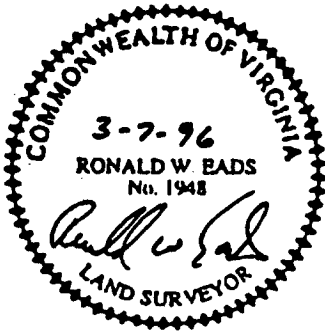


AREA = 64,639 S.F. OR  
1.484 ACRES

ASSESSOR'S PARCEL 2-18

STATE ROUTE NO. 199  
INTERNATIONAL BLVD.  
VARIABLE WIDTH R/W  
VDOT PROJECT 0199-099-102,PE-102 R/W-201

STATE ROUTE NO. 199  
VARIABLE WIDTH R/W  
VDOT PROJECT 0199-099-102,PE-102 R/W-201



LEGEND

IRF INDICATES IRON ROD FOUND  
IRS INDICATES IRON ROD SET

NOTE: THIS PROPERTY LIES IN ZONE X, (AREAS DETERMINED TO BE OUTSIDE THE 500 YEAR FLOODPLAIN), PER F.I.R.M.#510182-0025B, DATED 12/16/88.



Consulting Engineers

Engineers, Surveyors, Planners

Williamsburg, Virginia

PLAT OF SURVEY  
PARCEL OF LAND CONTAINING 1.484 ACRES  
OWNED BY  
WILLIAM H. RUTLEDGE

BRUTON DISTRICT

COUNTY OF YORK

VIRGINIA

Scale: 1" = 100'

Ref: NOTED

Drawn: MLP

Date: 03/07/96

Job No. 7982-1