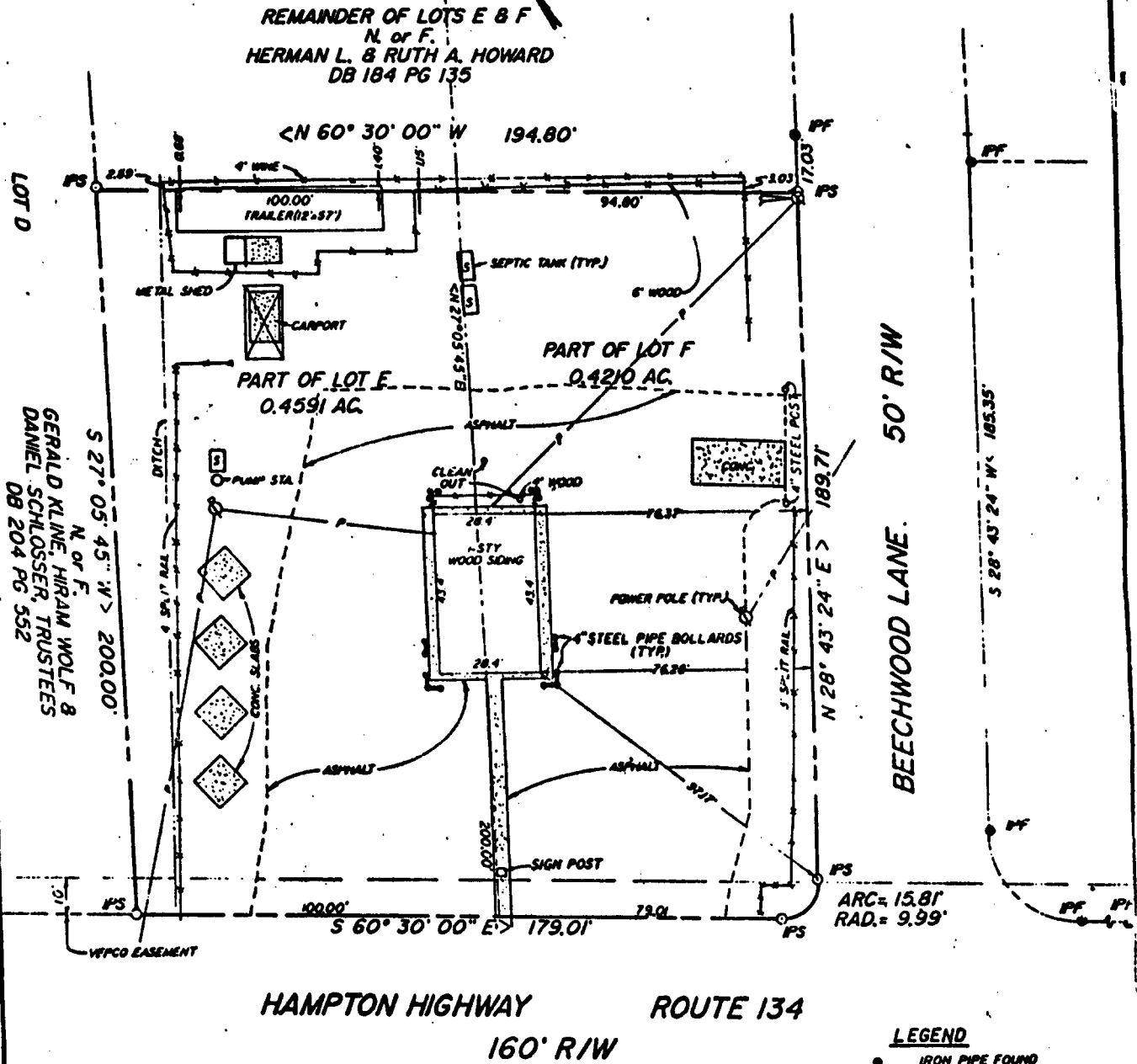


BK0942PG0014

BK0941PG0654

REMAINDER OF LOTS E & F
N. of F.
HERMAN L. & RUTH A. HOWARD
DB 184 PG 135



HAMPTON HIGHWAY ROUTE 134
160' R/W

LEGEND

- IRON PIPE FOUND
- IRON PIPE SET
- FENCE

REF: DB. 201, PG. 162
 DB. 356, PG. 80
 DB. 56, PG. 119
 PG. 6, PG. 102
 PG. 1, PG. 273

TAX MAP NO. 38A1-2-E1 & F1

C.K. Tudor
 C. K. TUDOR ENGINEERS, INC.

I HEREBY CERTIFY THAT THIS BOUNDARY SURVEY, TO THE BEST OF MY KNOWLEDGE AND BELIEF, IS CORRECT AND COMPLIES WITH THE VARIOUS PROCEDURES AND STANDARDS ESTABLISHED BY THE VIRGINIA STATE BOARD OF ARCHITECTS, PROFESSIONAL ENGINEERS, LAND SURVEYORS, AND CERTIFIED LANDSCAPE ARCHITECTS.

C. K. TUDOR CE & C.L.S.

125
 128
 133
 F. B. PG.

PLAT OF THE PROPERTY OF
BETTY L. McPHERSON
 (FORMERLY BETTY L. GREECH)

0.8801 ACRES
 PART OF LOTS E & F
SHADY BANKS FARM
 BETHEL DISTRICT
 YORK COUNTY, VIRGINIA

C.K. TUDOR ENGINEERS, INC.
 NEWPORT NEWS, VIRGINIA
 SCALE: 1" = 40' DATE: 4/20/90