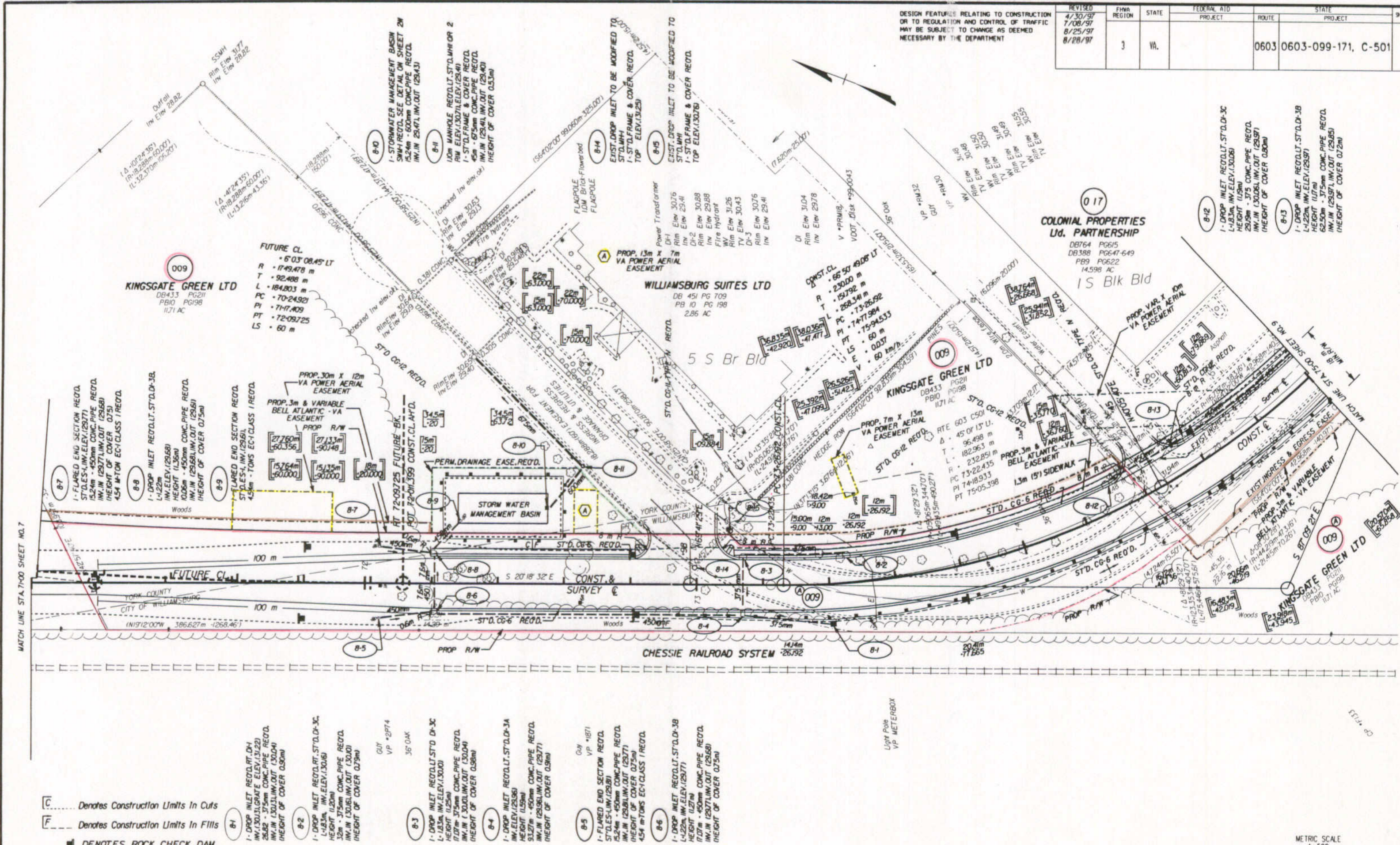


SUFFOLK DISTRICT DESIGN UNIT

REVISED	FHWA REGION	STATE	FEDERAL AID PROJECT	ROUTE	STATE PROJECT	SHEET NO.
4/30/97 7/08/97 8/25/97 8/28/97	3	VA.		0603	0603-099-171, C-501	8

DESIGN FEATURES RELATING TO CONSTRUCTION OR TO REGULATION AND CONTROL OF TRAFFIC MAY BE SUBJECT TO CHANGE AS DEEMED NECESSARY BY THE DEPARTMENT



SURVEYED BY: B. D. HARMON
 SUPERVISED BY: E. N. HOLLOWELL
 DESIGNED BY: R. T. SCOTT, JR.
 CAD OPERATOR: J. J. JONES
 REVISIONS BY: E. L. STRONG

C..... Denotes Construction Limits In Cuts
F..... Denotes Construction Limits In Fills
■ DENOTES ROCK CHECK DAM

- 8-1** 1-DROP INLET RECD. RT. D-3C
 L-1.83m, INV. ELEV. (130.00)
 H-1.83m, CONC. PIPE RECD.
 300mm - 375mm CONC. PIPE RECD.
 INV. IN (130.00), INV. OUT (130.00)
 (HEIGHT OF COVER 0.75m)
- 8-2** 1-DROP INLET RECD. RT. D-3C
 L-1.83m, INV. ELEV. (130.00)
 H-1.83m, CONC. PIPE RECD.
 300mm - 375mm CONC. PIPE RECD.
 INV. IN (130.00), INV. OUT (130.00)
 (HEIGHT OF COVER 0.75m)
- 8-3** 1-DROP INLET RECD. RT. D-3C
 L-1.83m, INV. ELEV. (130.00)
 H-1.83m, CONC. PIPE RECD.
 300mm - 375mm CONC. PIPE RECD.
 INV. IN (130.00), INV. OUT (130.00)
 (HEIGHT OF COVER 0.75m)
- 8-4** 1-DROP INLET RECD. RT. D-3C
 L-1.83m, INV. ELEV. (130.00)
 H-1.83m, CONC. PIPE RECD.
 300mm - 375mm CONC. PIPE RECD.
 INV. IN (130.00), INV. OUT (130.00)
 (HEIGHT OF COVER 0.75m)
- 8-5** 1-FLARED END SECTION RECD.
 STD. LES-1, INV. ELEV. (129.77)
 H-1.83m, CONC. PIPE RECD.
 300mm - 375mm CONC. PIPE RECD.
 INV. IN (129.77), INV. OUT (129.77)
 (HEIGHT OF COVER 0.75m)
- 8-6** 1-DROP INLET RECD. RT. D-3C
 L-1.83m, INV. ELEV. (130.00)
 H-1.83m, CONC. PIPE RECD.
 300mm - 375mm CONC. PIPE RECD.
 INV. IN (130.00), INV. OUT (130.00)
 (HEIGHT OF COVER 0.75m)

FIGURES IN BRACKETS AND DOT - DASHED LINES DENOTE PERMANENT EASEMENTS.

