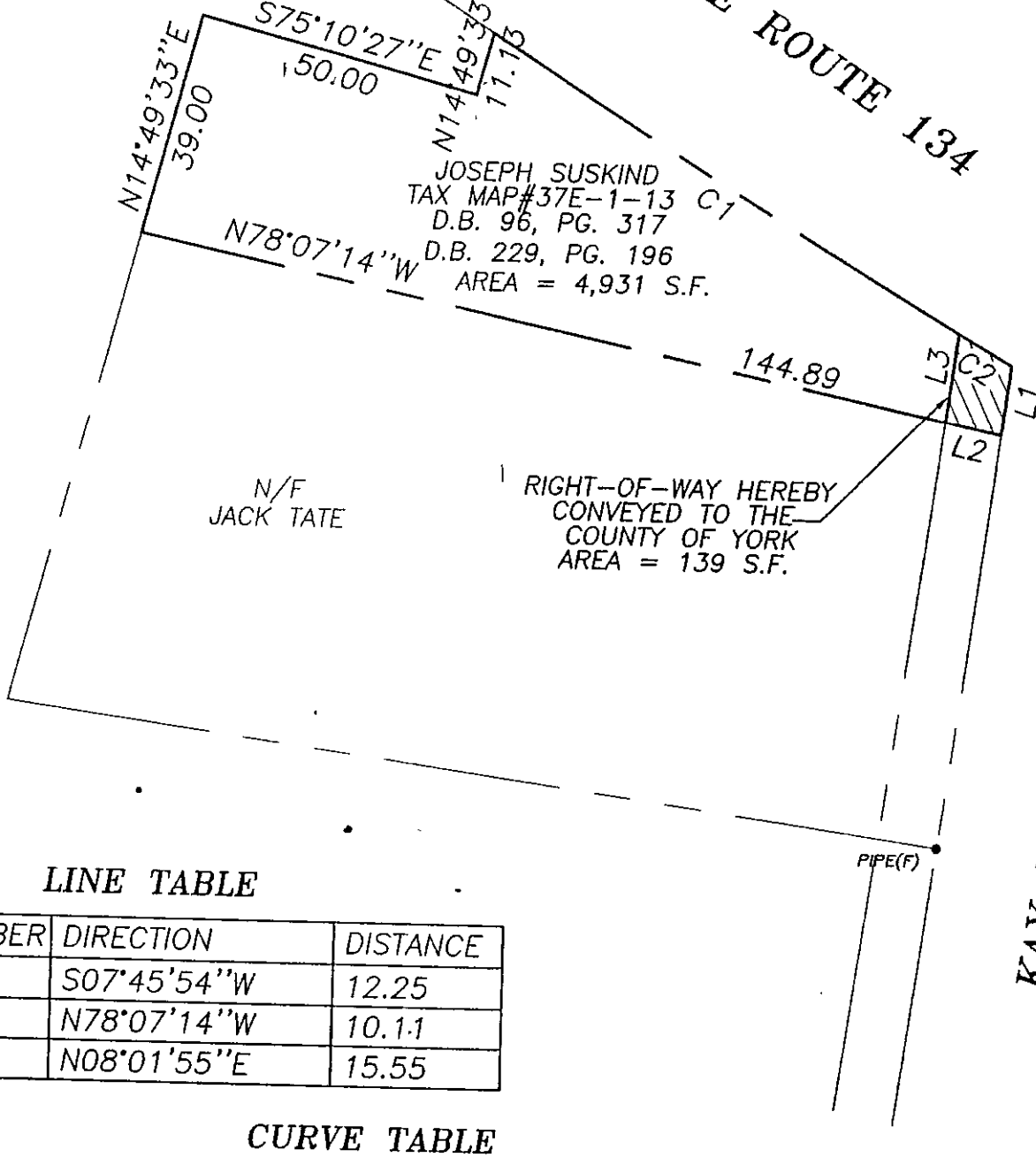


BK 1074 PG 0307

VA. STATE PLANE  
COORDINATE SYSTEM  
SOUTH ZONE

N/F  
EDWARD L. GUILLIAMS

HAMPTON HIGHWAY—STATE ROUTE 134



N/F  
JACK TATE

JOSEPH SUSKIND  
TAX MAP #37E-1-13 C1  
D.B. 96, PG. 317  
D.B. 229, PG. 196  
AREA = 4,931 S.F.

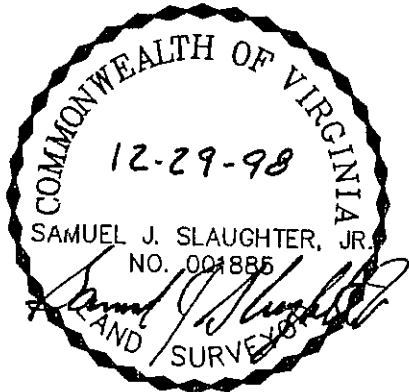
RIGHT-OF-WAY HEREBY  
CONVEYED TO THE  
COUNTY OF YORK  
AREA = 139 S.F.

LINE TABLE

NUMBER	DIRECTION	DISTANCE
L1	S07°45'54"W	12.25
L2	N78°07'14"W	10.11
L3	N08°01'55"E	15.55

CURVE TABLE

NUMBER	DELTA	RADIUS	LENGTH	TANGENT	CHORD	CH. BEARING
C1	02°42'56"	2041.86	96.78	48.40	96.77	N58°49'28"W
C2	00°18'10"	2041.86	10.79	5.40	10.79	S60°20'01"E



PLAT OF RIGHT-OF-WAY  
TO BE CONVEYED TO  
COUNTY OF YORK  
FROM  
JOSEPH SUSKIND  
ASSESSOR'S PARCEL No. 37E-1-13  
LOCATED IN BETHEL MAGISTERIAL DISTRICT  
COUNTY OF YORK, VIRGINIA

THIS PLAT IS INTENDED FOR A DESCRIPTION  
OF RIGHT-OF-WAY ONLY AND DOES NOT  
CONSTITUTE A BOUNDARY SURVEY. THIS IS  
NOT A SUBDIVISION PLAT.



SLEDD & ASSOCIATES, P.C.  
ENGINEERS PLANNERS SURVEYORS  
11832 ROCK LANDING DRIVE, SUITE 203  
NEWPORT NEWS, VIRGINIA 23606  
(757) 873-3386

SHEET NO.  
1  
OF 1  
DATE  
12/29/98

DRAWN BY: FIELD BOOK PROJECT NO. SCALE  
CADD 98-012A 1" = 30'

37E(1)13