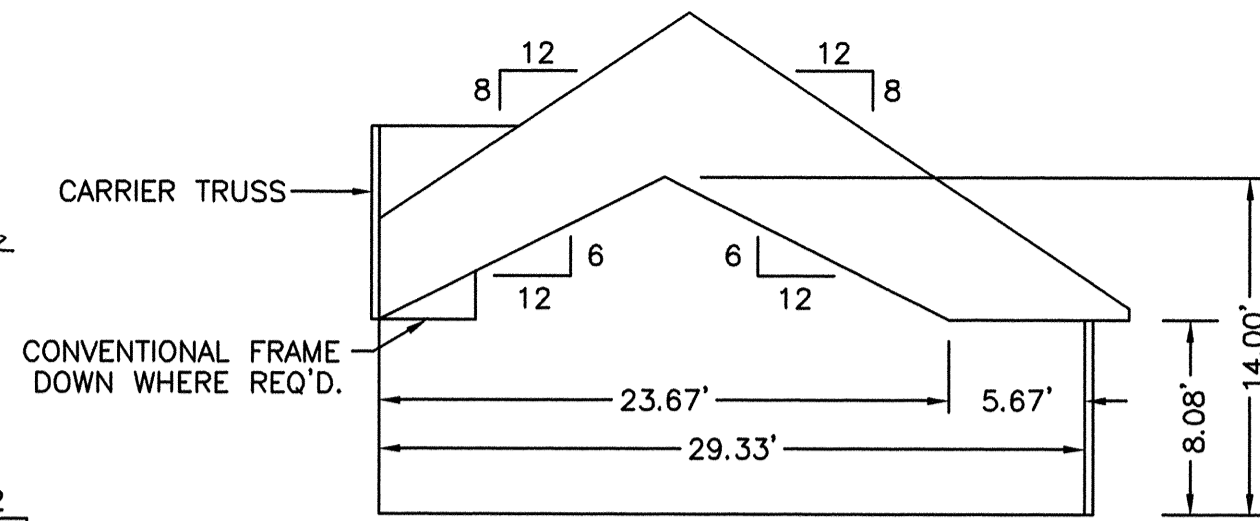
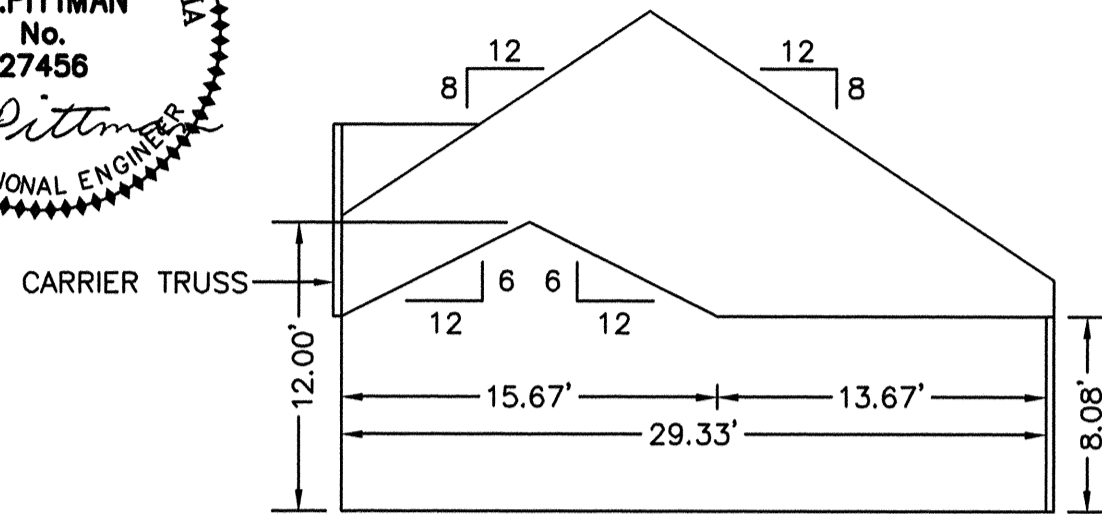


THE UNDERSIGNED CERTIFIES THAT THIS PLAN IS ACCURATE AND COMPLIES WITH THE PROVISIONS OF THE CODE OF VIRGINIA SECTION 55-79.58 (b) AND ALL UNITS DEPICTED HEREON HAVE BEEN SUBSTANTIALLY COMPLETED.

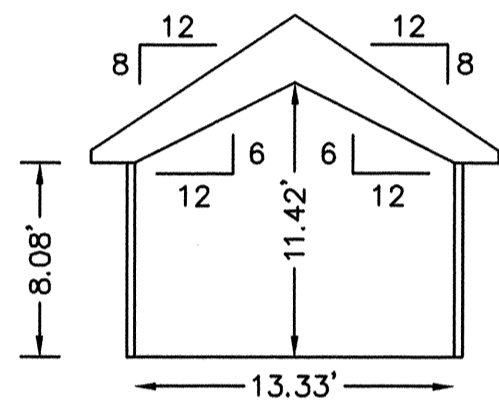
SIGNED: C.L. Pittman DATE: 1/28/2002  
C.L. PITTMAN, P.E.



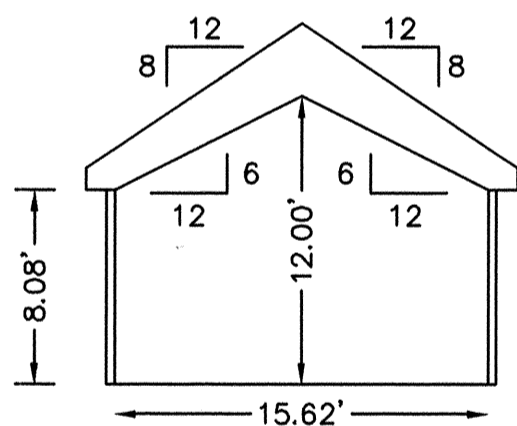
SECTION F-F



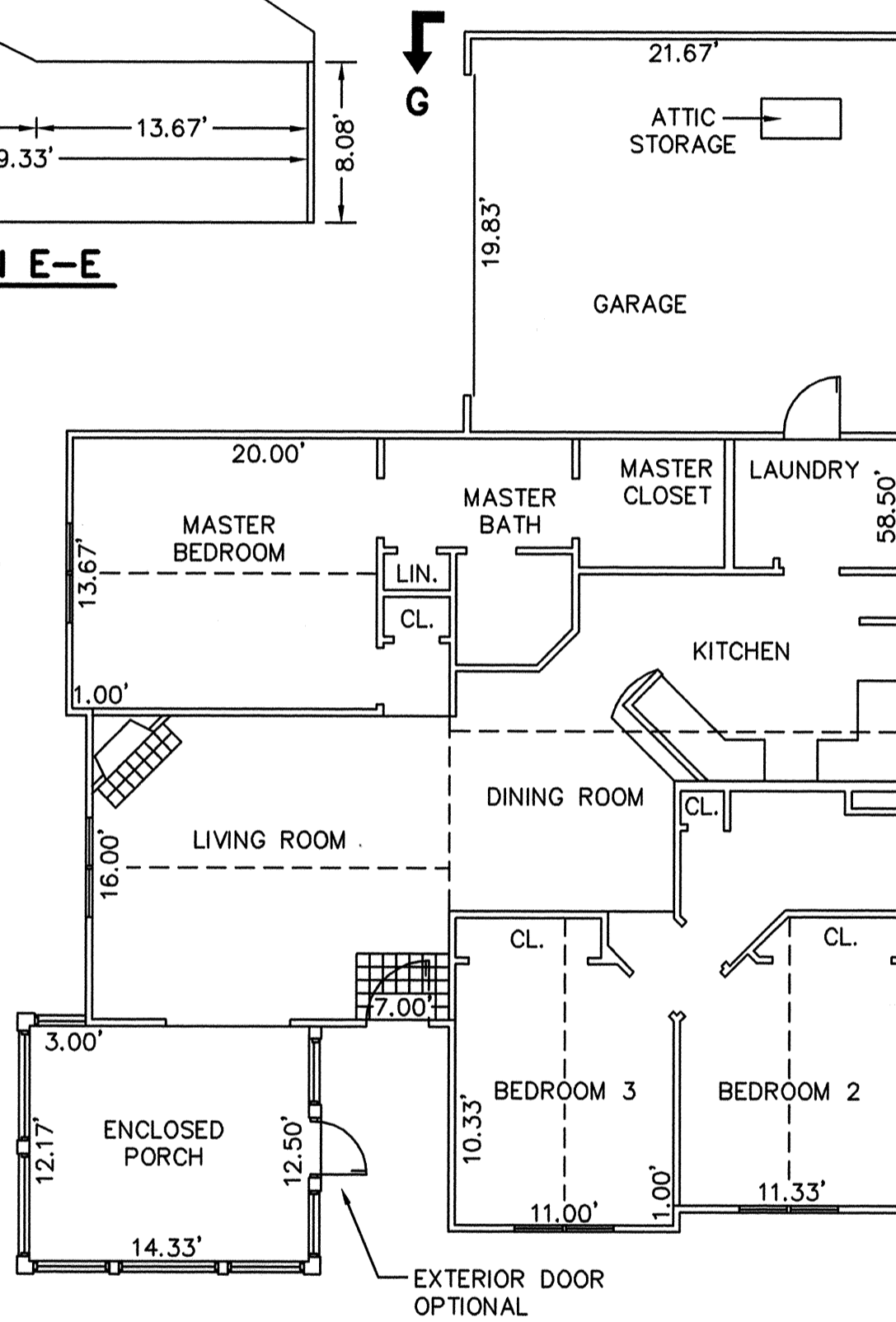
SECTION E-E



SECTION C-C

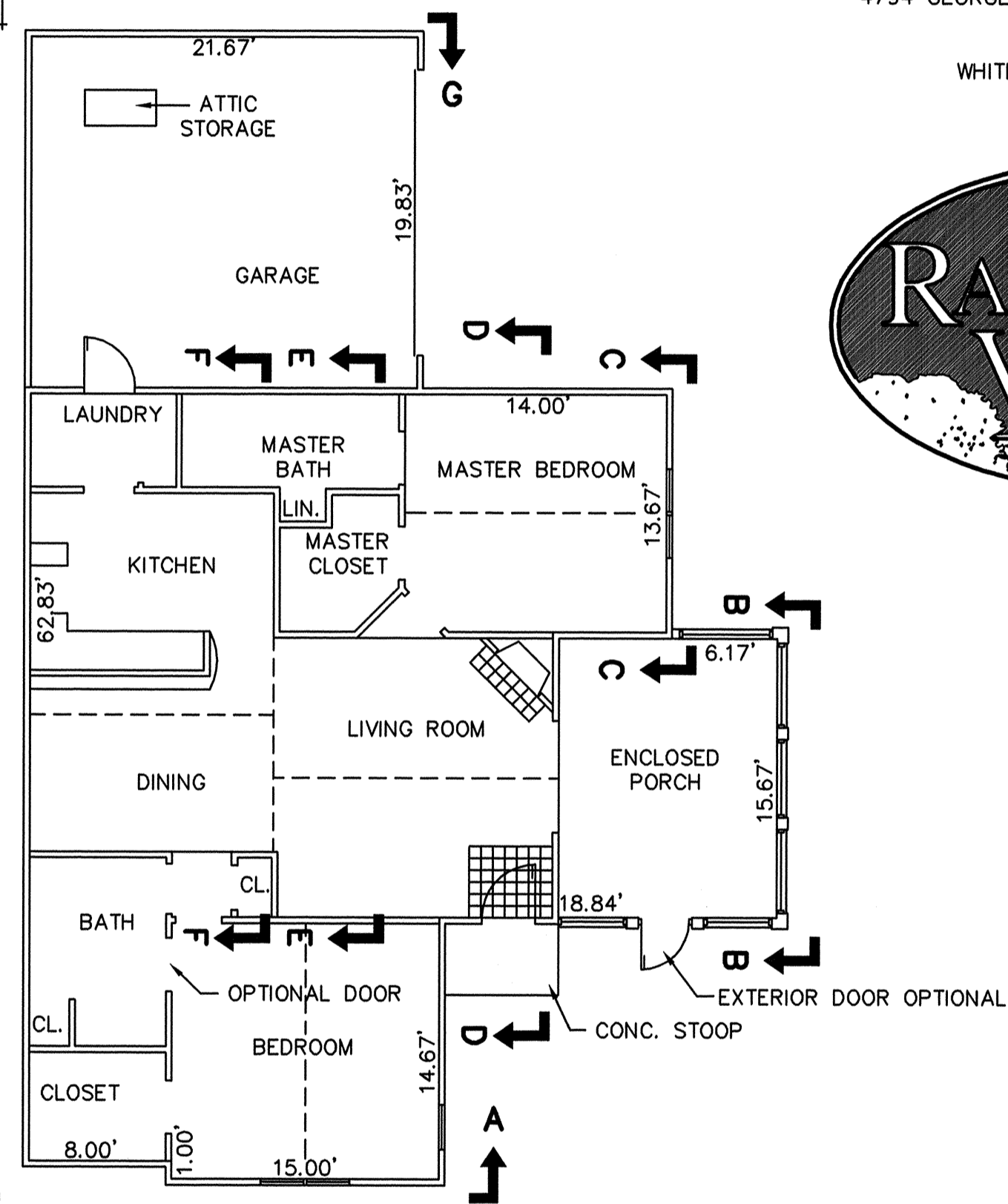


SECTION B-B  
ENCLOSED PORCH



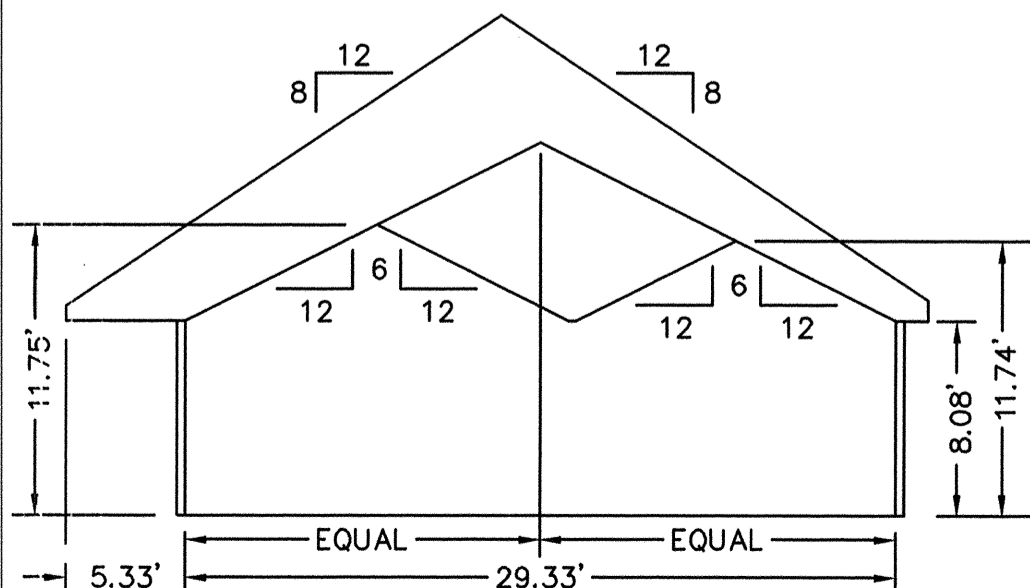
BUILDING 27-2 & 27-4 - CANTERBURY

FLOOR PLAN  
W/ ENCLOSED PORCH

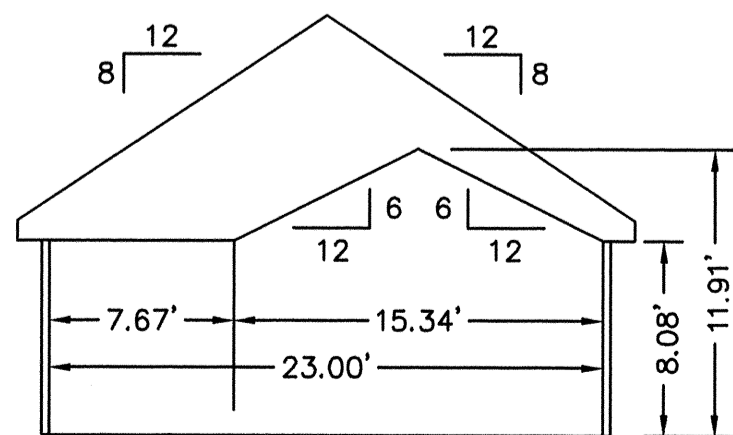


BUILDING 27-1 & 27-3 - ABBEY

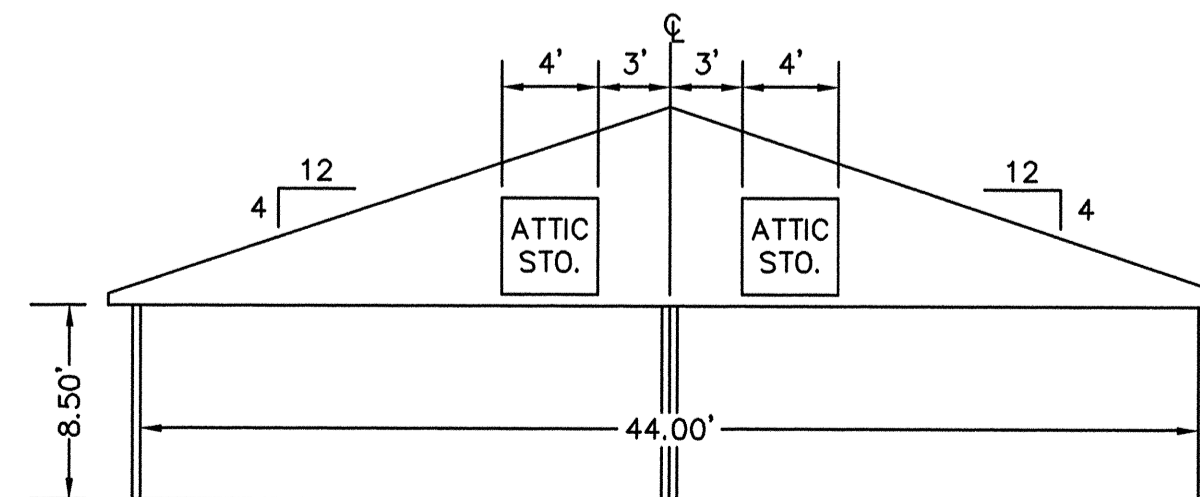
FLOOR PLAN  
W/ ENCLOSED PORCH



SECTION D-D



SECTION A-A

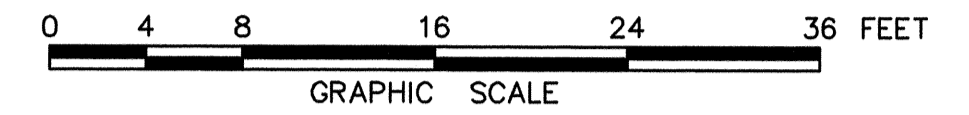


SECTION G-G  
GARAGE

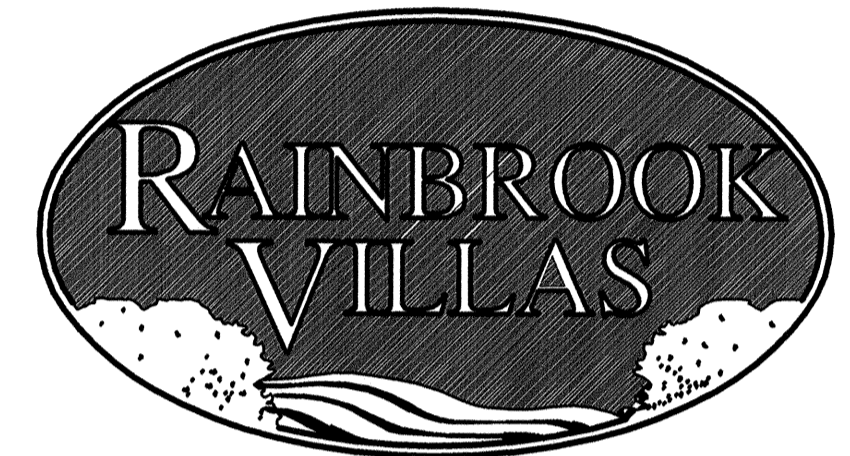
EXHIBIT "D"  
PLAT OF  
RAINBROOK VILLAS  
A CONDOMINIUM  
PHASE XIII

SHEET 3 OF 3

GRAFTON DISTRICT - COUNTY OF YORK, VIRGINIA  
SCALE: 1/8" = 1'-0" NOVEMBER 27, 2001



THE SIRINE GROUP, LTD.  
SURVEYORS • ENGINEERS • PLANNERS  
4794 GEORGE WASHINGTON MEMORIAL HIGHWAY  
U.S. ROUTE 17  
P.O. BOX 450  
WHITE MARSH, VIRGINIA 23183



APPROVED:  
YORK COUNTY BOARD OF SUPERVISORS

BY: Al Maddalena

DATE: 1/28/02

NOTES:  
1. ALL BUILDING DIMENSIONS SHOWN HEREON ARE INTERIOR DIMENSIONS AND ARE IN FEET.

STATE OF VIRGINIA  
COUNTY OF YORK

IN THE CLERK'S OFFICE OF THE CIRCUIT COURT FOR THE COUNTY OF YORK THE 29 DAY OF January, 2002, THIS PLAT WAS PRESENTED AND ADMITTED TO RECORD AS THE LAW DIRECTS AS INSTRUMENT NUMBER 020001463

TESTE: Lynn S. Jenkins  
CLERK

BY: Dusan O. Randall

1:17 p.m.