

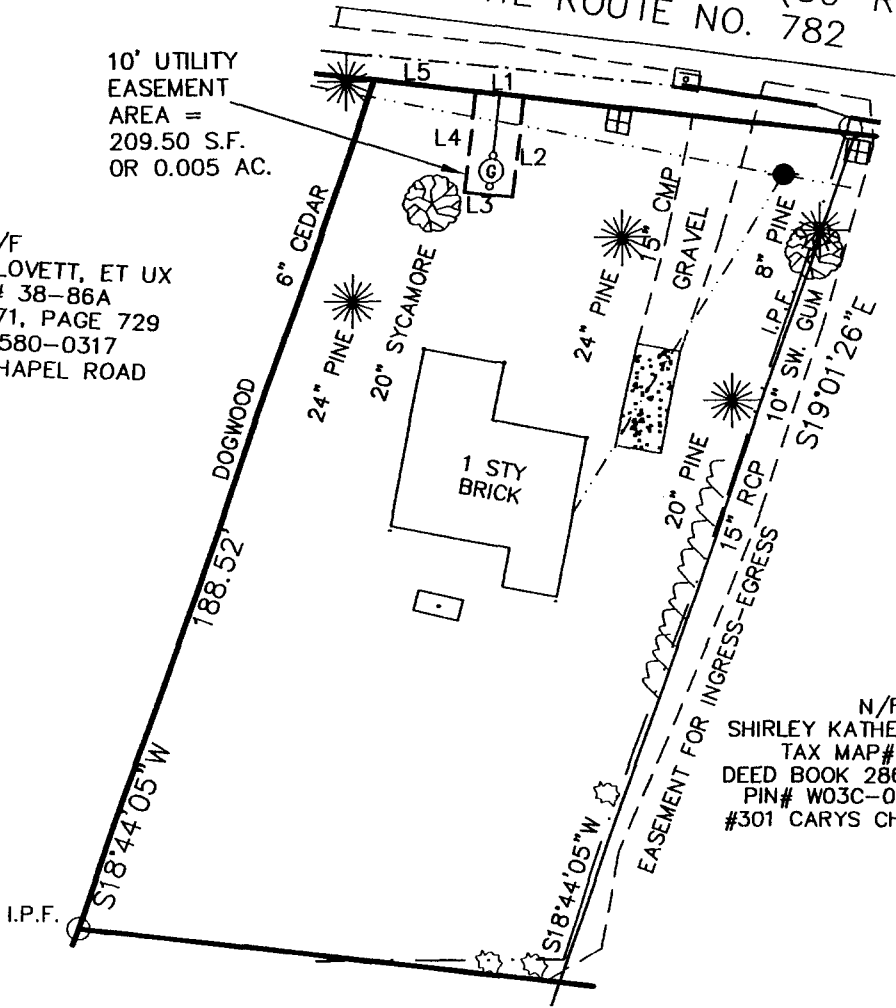


VIRGINIA STATE GRID
SOUTH ZONE
YORK COUNTY GEODETIC CONTROL
STA. #119

CARY'S CHAPEL ROAD (50' R/W)
STATE ROUTE NO. 782

10' UTILITY
EASEMENT
AREA =
209.50 S.F.
OR 0.005 AC.

N/F
LAWRENCE E. LOVETT, ET UX
TAX MAP# 38-86A
DEED BOOK 171, PAGE 729
PIN# W03C-580-0317
#313 CARYS CHAPEL ROAD



Filed in the Clerk's Office, Circuit Court, York Co., VA
the 11 day of April, 2002
Teste: Lynn S. Jenkins, Clerk 10:46am.
by [Signature]

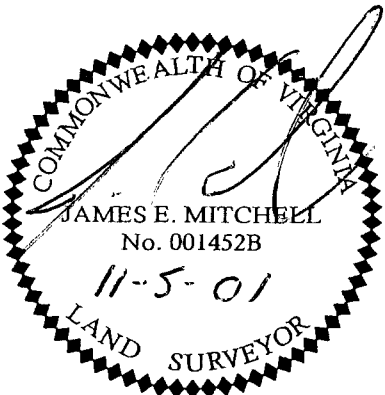
N/F
SHIRLEY KATHERINE BANKS
TAX MAP# 38-86
DEED BOOK 286, PAGE 404
PIN# W03C-0824-0257
#301 CARYS CHAPEL ROAD

N/F
SAMUEL P. SLADE, JR. ET ALS
TAX MAP# 38-86B
DEED BOOK 586, PAGE 647
PIN# W03C-0681-0304
#309 CARYS CHAPEL ROAD

LINE TABLE

L1	S83°28'54"E	10.00'
L2	S6°31'07"W	20.95'
L3	N83°28'54"W	10.00'
L4	N6°31'07"E	20.95'
L5	S83°28'53"E	21.14'

YORK COUNTY
APPROVED FOR RECORDATION
BY: J.B. Angstadt
TITLE: Right-of-Way Agent
DATE: April 3, 2002



PLAT OF EASEMENT CONVEYANCE
FROM
SAMUEL P. SLADE, JR. ET ALS
TO
COUNTY OF YORK, VIRGINIA
LOCATED: BETHEL MAGISTERIAL DISTRICT
COUNTY OF YORK, VIRGINIA

DATE: NOVEMBER 5, 2001 SCALE: 1" = 40'

MITCHELL-WILSON ASSOCIATES, P.C.
CIVIL ENGINEERS & LAND SURVEYORS
720 MAIN STREET, SUITE 112, 2ND FLOOR, P.O. BOX 1269