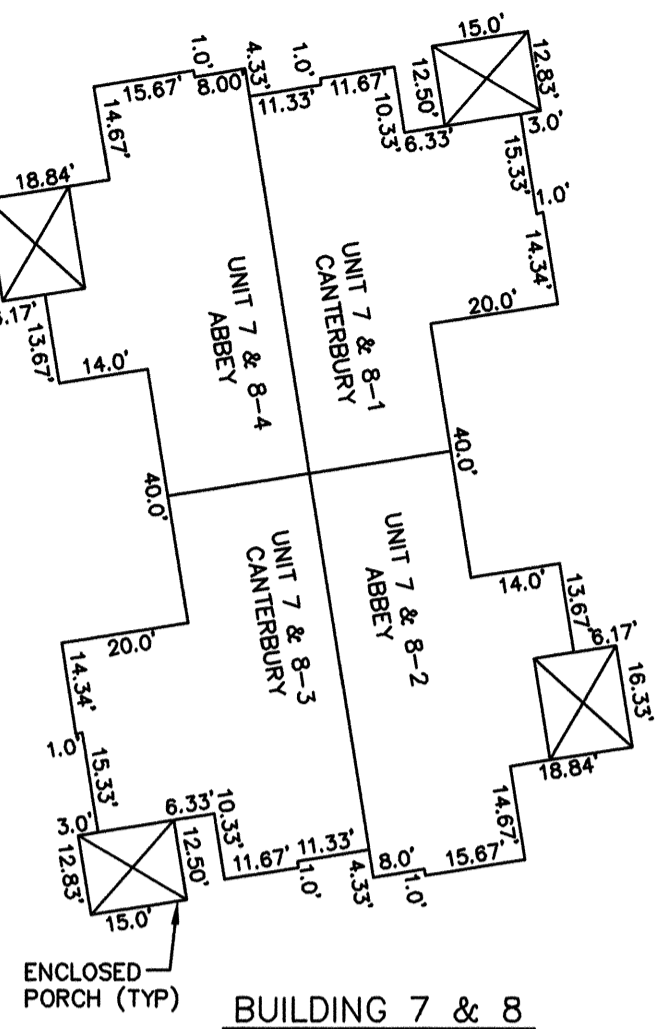


VICINITY MAP SCALE: 1" = 2000'

NOTE: ALL BUILDING DIMENSIONS SHOWN HEREON ARE EXTERIOR FRAMING DIMENSIONS AND ARE IN FEET.



BUILDING 7 & 8

NO.	RADIUS	DELTA	ARC	TANGENT	CHORD	CHORD BRG.
1	950.00'	15°24'33"	255.49'	128.52'	254.72'	S04°35'23"E
2	1006.00'	11°02'41"	193.92'	97.26'	193.62'	N06°46'19"W
3	50.00'	50°45'18"	44.29'	23.72'	42.86'	N55°12'18"E
4	150.00'	38°43'45"	101.39'	52.72'	99.47'	N61°13'04"E
5	60.00'	102°32'30"	107.38'	74.81'	93.61'	N09°25'03"W
6	150.00'	38°43'45"	101.39'	52.72'	99.47'	N80°03'10"W
7	176.00'	12°28'12"	38.31'	19.23'	38.23'	N74°20'51"E
8	224.00'	01°45'06"	6.85'	3.42'	6.85'	N68°59'18"E
9	54.00'	90°00'00"	84.82'	54.00'	76.37'	N54°25'03"W
10	20.00'	81°37'46"	28.49'	17.27'	26.14'	N50°13'56"W
11	224.00'	07°22'12"	28.81'	14.43'	28.79'	N87°21'43"W
12	300.00'	15°23'32"	80.59'	40.54'	80.35'	S88°37'37"W
13	20.00'	90°00'00"	31.42'	20.00'	28.28'	S35°55'51"W
14	15.00'	90°00'00"	23.56'	15.00'	21.21'	S54°04'09"E

NOTE: PROPERTY LIES IN ZONE X, WHITE, (AREAS DETERMINED TO BE OUTSIDE 500-YEAR FLOOD PLAIN), AS SHOWN ON FLOOD INSURANCE RATE MAP FOR YORK COUNTY, VIRGINIA, COMM. NO. 510182 00368, 12/16/88 AND COMM. NO. 510182 00378, 12/16/88.

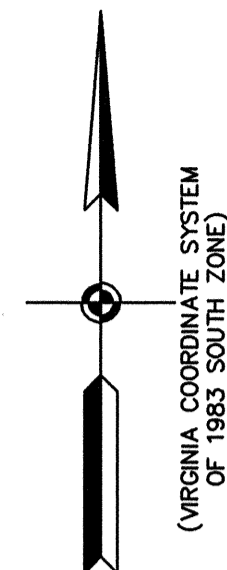
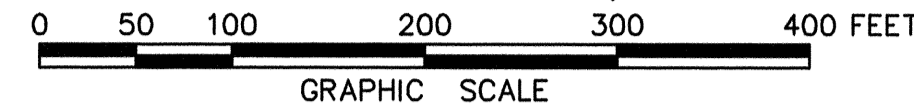
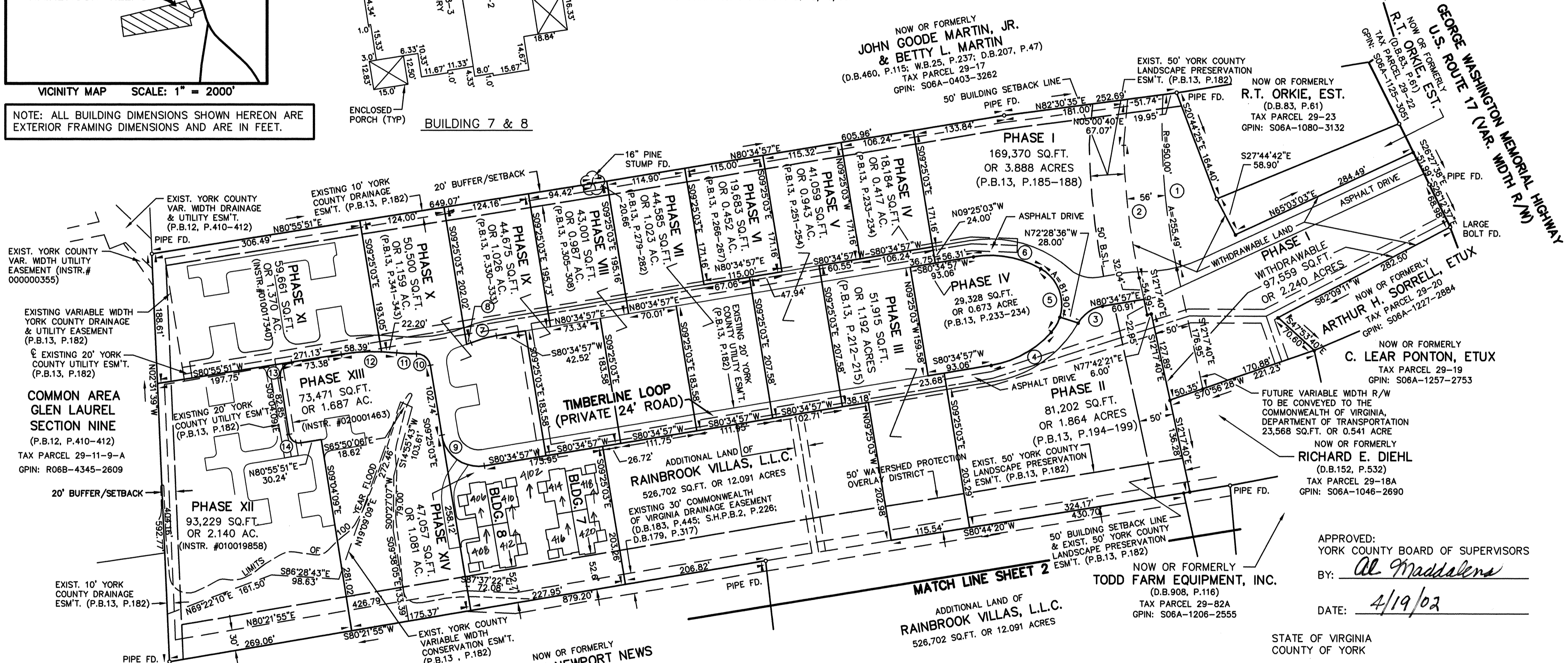


EXHIBIT "C"  
PLAT OF  
RAINBROOK VILLAS  
A CONDOMINIUM  
PHASE XIV (INSTR.#020005988)

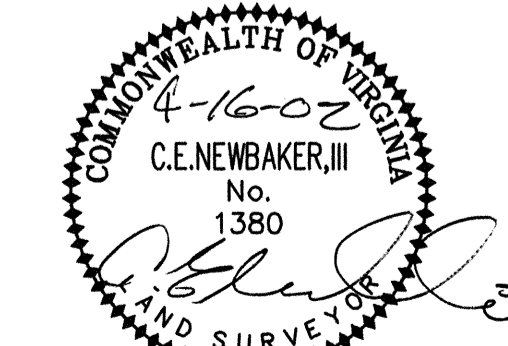
SHEET 1 OF 4  
GRAFTON DISTRICT - COUNTY OF YORK, VIRGINIA  
SCALE: 1" = 100' APRIL 16, 2002



THE SIRINE GROUP, LTD.  
SURVEYORS • ENGINEERS • PLANNERS  
4794 GEORGE WASHINGTON MEMORIAL HIGHWAY  
U.S. ROUTE 17  
P.O. BOX 450  
WHITE MARSH, VIRGINIA 23183



UTILITY NOTES:  
WATER: EACH UNIT WITHIN THIS CONDOMINIUM IS SERVED BY PUBLIC WATER PROVIDED BY THE CITY OF NEWPORT NEWS.  
SEWER: EACH UNIT WITHIN THIS CONDOMINIUM IS SERVED BY PUBLIC SEWER PROVIDED BY THE COUNTY OF YORK AND H.R.S.D.  
PHASE XIV AREA = 47,057 SQ.FT. OR 1.081 ACRES  
ADDITIONAL AREA = 526,702 SQ.FT. OR 12.091 ACRES  
TOTAL AREA = 1,393,622 SQ.FT. OR 31.993 ACRES



NOW OR FORMERLY  
CITY OF NEWPORT NEWS  
(D.B.591, P.385)  
TAX PARCEL 23-00-00-014  
GPIN: R06C-1589-2324

NOW OR FORMERLY  
TODD FARM EQUIPMENT, INC.  
(D.B.908, P.116)  
TAX PARCEL 29-82A  
GPIN: S06A-1206-2555

APPROVED:  
YORK COUNTY BOARD OF SUPERVISORS  
BY: *Al Maddalena*  
DATE: 4/19/02

STATE OF VIRGINIA  
COUNTY OF YORK  
IN THE CLERK'S OFFICE OF THE CIRCUIT COURT FOR THE COUNTY OF YORK, VIRGINIA, THE 19 DAY OF April, 2002, THIS PLAT WAS PRESENTED AND ADMITTED TO RECORD AS THE LAW DIRECTS AS INSTRUMENT NUMBER:  
**020007005**  
TESTE: *Lynn S. Jenkins*  
CLERK  
BY: *pwhite*  
DEPUTY CLERK  
PROPERTY IS ASSESSOR'S PARCEL 29-00-00-018  
GPIN: S06A-0191-2578  
AND PARCEL 29-00-00-082D  
GPIN: S06C-0716-2263